

# LEDiL

Product catalogue

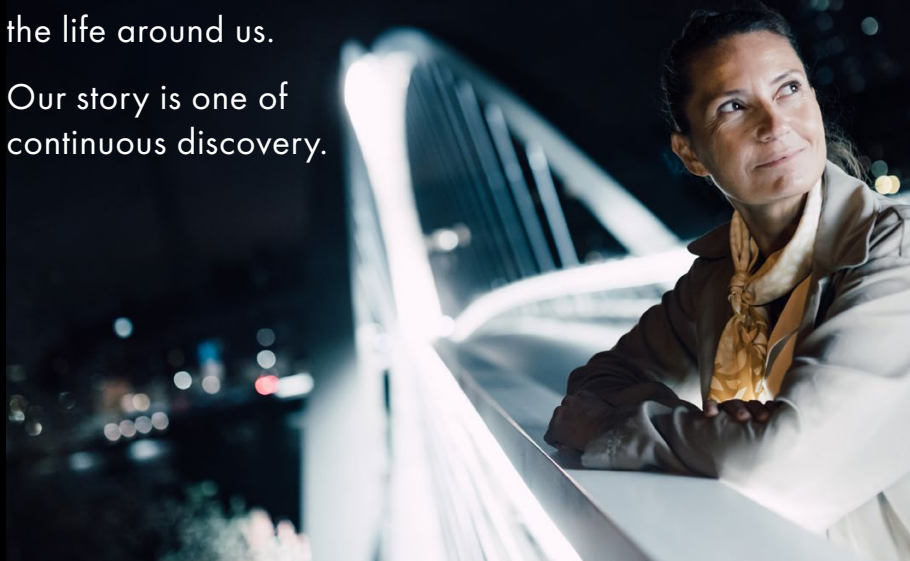
Q2, 2024



Range & precision.  
Our optics offer both.

Since our beginnings in 2002,  
we set out on a mission to  
perfect light for a luminous  
future – for humankind and  
the life around us.

Our story is one of  
continuous discovery.



With every customer case, we advance the quality of LED light by continuously challenging our competence and pushing the boundaries of innovation.

Our state-of-the-art optical solutions help create light that enhances wellbeing, functionality, safety and sustainability.

Whether we work on indoor or outdoor lighting, we have the experience and technological know-how to achieve extraordinary results in a wide range of applications.

Together with our customers and partners, we enable and strengthen a shared ecosystem of light; because we know that no one can achieve a better future alone.

#### Useful information

You can find product-ordering names together with the latest product information and LED compatibility at  
> [ledil.com/search](https://www.ledil.com/search)

For your convenience we have included saved search paths under each product family name. This address will take you directly to the family listing on our website.

Find general assembly instructions and other useful information about LEDiL products in our Installation guide at  
> [ledil.com/installation\\_guide](https://www.ledil.com/installation_guide)

## Sales network & area sales representatives

Detailed information and list of distributors: [ledil.com/contacts](http://ledil.com/contacts)

### Europe

Finland, Sweden, Norway, Iceland, Denmark	Jean-Martin Nuutinen	jean-martin.nuutinen@ledil.com	+358 400 874 760
Estonia, Latvia, Lithuania	Jean-Martin Nuutinen	jean-martin.nuutinen@ledil.com	+358 400 874 760
Germany, Austria, Switzerland	Martin Lengwenus	martin.lengwenus@ledil.com	+49 157 7191 6641
UK, Ireland, Belgium, Netherlands, Luxembourg	Simon Aldred	simon.aldred@ledil.com	+44 7540 726 384
France	Benjamin Kiecken	benjamin.kiecken@ledil.com	+33 682 795 592
	Arthur Benoist-Gironiere	arthur.benoist-gironiere@ledil.com	+33 699 093 246
Spain, Portugal	Dave Simpson	dave.simpson@ledil.com	+34 607 858 901
Italy, Malta	Diego Quadrio	diego.quadrio@ledil.com	+39 340 659 9236
Balkan, Greece	Gregor Pokeržnik	gregor.pokerznik@ledil.com	+386 41 667 623
Poland, Czech Republic, Slovakia	Marcin Wiewiórka	marcin.wiewiorka@ledil.com	+48 501 765 576
Turkey	Engin Bilgili	engin.bilgili@ledil.com	+90 531 811 3646

### Middle East

Middle East	Florian Hoerl	florian.hoerl@ledil.com	
Israel	Florian Hoerl	florian.hoerl@ledil.com	

### Africa

Algeria, Morocco, Tunisia	Benjamin Kiecken	benjamin.kiecken@ledil.com	+33 682 795 592
	Arthur Benoist-Gironiere	arthur.benoist-gironiere@ledil.com	+33 699 093 246
Africa	Florian Hoerl	florian.hoerl@ledil.com	

### Asia & Oceania

India	Radheshyam Nandigam	india@ledil.com	+91 9676 333 162
	Vijay Padimandla	india@ledil.com	+91 8008 413 434
Mongolia, Hong Kong SAR, Taiwan	Harry Tsai	harry.tsai@ledil.com	+86 158 1558 5631
	Harry Tsai	harry.tsai@ledil.com	+86 158 1558 5631
China	Nancy Liu	nancy.liu@ledil.com	+86 158 1768 3941
	Yugui Lian	yugui.lian@ledil.com	+86 135 8568 7997
	Exleod An	pengfei.an@ledil.com	+86 185 0308 3638
South-Korea	Gunwoo Kim	gw.kim@ledil.com	+82 10 9996 9127
Japan	Kazuaki Kimura	kazuaki.kimura@ledil.com	+81 90 3212 4135
Thailand, Malaysia, Singapore, Vietnam, Indonesia, Philippines, Australia, New Zealand	Supplack Sae-Sean	supplack.sae-sean@ledil.com	+66 869 741 968

### North America

Eastern USA, Eastern Canada	Customer Service	customer.service.us@ledil.com	+1 815 766 3200
West Canada, West US	Jeff Roeder	jeff.roeder@ledil.com	+1 949 275 8359
Midwest USA, Ontario	Michael Waddell	michael.waddell@ledil.com	+1 262 729 6487

### Latin America & Central America

Brazil	Bruno Musolino	bruno.musolino@ledil.com	+55 11 9 8264 6688
	Jen John Lee	jen.lee@ledil.com	+55 11 9 7378 8874
	Fernanda Cruciani	fernanda.cruciani@ledil.com	+55 11 9 6645 8450
Colombia, Central America	Rodrigo Menabrito	rodrigo.menabrito@ledil.com	+52 1 81 2567 2957
	Pedro Octaviano	pedro.octaviano@ledil.com	+52 1 71 2342 1872
México	Rodrigo Menabrito	rodrigo.menabrito@ledil.com	+52 1 81 2567 2957
	Rodrigo Menabrito	rodrigo.menabrito@ledil.com	+52 1 81 2567 2957
Argentina, Chile, Paraguay, Uruguay, Peru	Pablo Bianchi	pablo.bianchi@ledil.com	+54 9 11 5485 6967

### Customer service

US and Canada [customer.service.us@ledil.com](mailto:customer.service.us@ledil.com) +1 815 766 3200

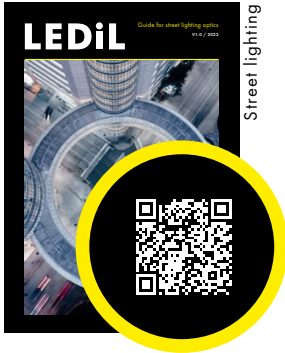
All other countries [sales@ledil.com](mailto:sales@ledil.com)

### Inside sales

Stina Åkerberg | indoor [stina.akerberg@ledil.com](mailto:stina.akerberg@ledil.com) +358 40 548 0886

Nonna Raita | outdoor [nonna.raita@ledil.com](mailto:nonna.raita@ledil.com) +358 40 833 2707

# Application guides



Street lighting



Retail lighting



Sports lighting



Urban lighting



Horticultural lighting



Office lighting



Architectural lighting



Retail lighting

## Common beam type abbreviations

name	beam type	name	beam type	name	beam type
RS	real spot	WWW	very wide	REC	rectangular
SS	smooth spot	XW	extra wide	WAS	wall washer
D	diffused spot	20, 40, 60 etc.	beam angle in degrees	ZTXX	asymmetric
S	spot	UP	uplight	SE	side emitter
M	medium	BW	batwing		
W	wide	WG	wall grazer		
WW	wider	O	oval		

# Table of contents

## 6 Single lenses

---

BELLA	12	LAURA	9
BILLIE	10	LEIA	13
CORAL	15	LEILA	9
CRYSTAL	14	LISA	6
EMERALD	13	LOTTA	12
EMILY	11	MIRA	10
EMMA	12	OLGA	20
EVA	10	RGBX	15
FILIPPA	14	ROSE	8
FLARE	14	SEANNA	14
GABRIELLA	15	SIRI	12
HEIDI	11	SURI	15
HELENA	13	STRADA-S	12
IRENE	10	TINA	7
IRIE	10	TITANUM	11
IRIS	10	VERONICA	6
JULIA	12	VIOLETTA	8
KIKI	12	ZOE	13
LARISA	6		

## 16 COB lenses

---

AMY	16
CARMEN	19
ILONA	17
MOLLY	18
RONDA	18
SAGA	20
WINNIE	19
YASMEEN	17
ZORYA	20

## 21 Multi-lens arrays

---

ANGIE	22
ANNA	22
CUTE	21
GT3	21
GT4	21
IDA	22
SANDRA	21
SATU	21
TAMPA	22
TUIJA	21
VIRPI	22

## 23 Linear lenses

---

BRIANNA	29
CLAUDIA	26
DAHLIA	26
DAISY	28
DAISY-MINI	29
DALINE	30
DARCY	30
FLORENCE	24
FLORENTINA	31
ISLA	25
LIANNA	25
LILIAN	23
LINDA	27
LINNEA	23
SHELLY	23
VANESSA	26
VIOLET	26

## 32 Reflectors

---

ADELIA	32
ADELY	32
ALISE	33
ANGELA / ANGELINA / ANGELETTE	38
BARBARA	36
BOOM	39
BRIDGET	39
BROOKE	34
ELLA	33
LENA / LENINA	37
MINNIE	39
MIRELLA	35
RITA	39

## 42 Street & area lighting

---

AMBER	49
JENNY	53
SITARA	47
SPORT	52
STELLA	53
STRADA	44
STRADELLA	50
THEIA	48

## 54 Highbay lighting

---

HB	55
HB-2X2	55
HB-IP-2X6	55
HB-IP-24	55
STRADELLA-HB	55
SITARA-HB	55
VICTORIA	55

## 40 Baseparts

---

HEKLA	41
-------	----

## 56 Custom solutions

---

## 57 Product index

---

# Single lenses

## LARISA

[www.ledil.com/larisa](http://www.ledil.com/larisa)

Compatibility: Up to 3535 size LED packages  
Versions with CLIP or PIN mounting available

name	beam type	h	d	typ. FWHM	typ. eff.	typ. cd/lm
LARISA-RS	real spot	7.5	9.9 x 9.9	19	80	3.7
LARISA-RZ	diffused spot	7.5	9.9 x 9.9	27	77	1.9
LARISA-M	medium	7.5	9.9 x 9.9	32	86	2.2
LARISA-W	wide	7.5	9.9 x 9.9	48	85	1.2
LARISA-WW	extra wide	7.5	9.9 x 9.9	57	84	0.9
LARISA-O	oval	7.5	9.9 x 9.9	40 + 22	81	2.1



LARISA

## LISA

[www.ledil.com/lisa](http://www.ledil.com/lisa)

Compatibility: Up to 3535 size LED packages  
Versions with CLIP or PIN mounting available

### LISA

name	beam type	h	d	typ. FWHM	typ. eff.	typ. cd/lm
LISA-RS	real spot	7.1	10.8	15	90	3.9
LISA-SS	smooth spot	7.1	10.8	22	86	3.8



LISA-SS

### LISA2

LISA2-RS	real spot	≈ 7	9.9	19	89	3.1
LISA2-M	medium	≈ 7	9.9	22	89	2.8
LISA2-O	oval	≈ 7	9.9	45 + 21	82	2.2
LISA2-O-90	oval	≈ 7	9.9	19 + 48	82	2.2
LISA2-W	wide	≈ 7	9.9	34	88	1.8
LISA2-WW	extra wide	≈ 7	9.9	46	89	1.1
LISA2-WWW	extra <sup>2</sup> wide	≈ 7	9.9	80	83	0.4
LISA2-R-PIN	extra wide	≈ 7	9.9	80	88	0.4



LISA2-R-PIN

### LISA3 / LISA3CSP

-RS	real spot	7.7 / 7.2	10	14	89	9.4
-S	spot	7.7 / 7.2	10	15	89	8
-M	medium	7.7 / 7.2	10	25	89	4.1
-W	wide	7.7 / 7.2	10	35	90	2.7
-WW	extra wide	7.7 / 7.2	10	45	90	1.5
-WWW	extra <sup>2</sup> wide	7.7 / 7.2	10	62	89	0.9
-O/-O-90	oval	7.7 / 7.2	10	16 + 48	84	2.8
-O2	oval	7.7 / 7.2	10	34.5 + 22	80	2.6



LISA3

## VERONICA

[www.ledil.com/veronica](http://www.ledil.com/veronica)

Compatibility: Up to 7070 size, SQ-MINI optics up to 3535 size packages

### VERONICA

name	beam type	h	d	typ. FWHM	typ. eff.	typ. cd/lm
VERONICA-RS	real spot	12.2	26	12	90	18.4
VERONICA-RZ-O	COMING oval	12.5	26	asymm.	86	1.4
VERONICA-O	oval	12.2	26	54 + 11	84	4.2

### VERONICA-SQ

VERONICA-SQ-RS	real spot	12.2	22.5 x 22.5	13	89	18.8
VERONICA-SQ-M	medium	12.2	22.5 x 22.5	30	89	3.1
VERONICA-SQ-W	wide	12.2	22.5 x 22.5	52	92	1.2
VERONICA-SQ-SE	side emitter	11.4	22.5 x 22.5	189	91	2.7
VERONICA-SQ-O	oval	12.2	22.5 x 22.5	56 + 12	82	3.2
VERONICA-SQ-WG	asymm.	13.6	22.5 x 22.5	asymm.	92	9.2



VERONICA

VERONICA-SQ

VERONICA-SQ-MINI

### VERONICA-SQ-MINI

VERONICA-SQ-MINI-RS	real spot	8.9	13.9 x 13.9	14	92	11
VERONICA-SQ-MINI-D	diffused spot	8.9	13.9 x 13.9	15	92	7.3
VERONICA-SQ-MINI-M	medium	8.9	13.9 x 13.9	34	89	2.4
VERONICA-SQ-MINI-W	wide	8.9	13.9 x 13.9	56	91	0.9
VERONICA-SQ-MINI-O	oval	8.9	13.9 x 13.9	15 + 50	84	3.8



## TINA

[www.ledil.com/tina](http://www.ledil.com/tina)

Compatibility: Up to 3535 size LED packages

### TINA

name	beam type	h	d	typ. FWHM	typ. eff.	typ. cd/lm
TINA-RS	real spot	≈ 10	16.1	13	93	10.9
TINA-D	diffused spot	≈ 10	16.1	16	92	6.1
TINA-M	medium	≈ 10	16.1	29	88	2.1
TINA-W	wide	≈ 10	16.1	48	91	1.3
TINA-WW	extra wide	≈ 10	16.1	61	91	0.8
TINA-BW	batwing	≈ 10	16.1	asymm.	80	1.0
TINA-O	oval	≈ 10	16.1	34 + 15	89	3.4

### TINA2

TINA2-RS *	real spot	≈ 10	16.1	14	91	10.4
TINA2-D *	diffused spot	≈ 10	16.1	16	89	6.9
TINA2-SS	smooth spot	≈ 9.5	16	22	88	4.5
TINA2-M *	medium	≈ 10	16.1	29	86	2.5
TINA2-W *	wide	≈ 10	16.1	46	87	1.4
TINA2-WW	extra wide	≈ 10	16.1	58	87	0.9
TINA2-R	wide	≈ 10	16.1	74	90	0.5
TINA2-O*/TINA-O-90	oval	≈ 10	16.1	35 + 16	87	3.5
TINA2-O-WAS *	asymm. oval	≈ 10	16.1	asymm.	86	3.6

\* Compatible with TINA-SC

### TINA3

TINA3-S	spot	11.4	16.1	13	77	8.4
TINA3-W	wide	≈ 7	16.1	39	90	1.7
TINA3-WW	extra wide	≈ 7	16.1	53	90	1.0
TINA3-WWW	extra <sup>2</sup> wide	≈ 7	16.1	71	88	0.6
TINA3-OO	oval	≈ 7	16.1	59 + 39	90	1.2

### TINA-Y

Optimized for 3535 high power LED packages and compatible with up to 5050 LED packages

name	beam type	h	d	typ. FWHM	typ. eff.	typ. cd/lm
TINA-Y-RS	real spot	10	16.1	17	81	5.8
TINA-Y-SS	smooth spot	10	16.1	18	81	5.4
TINA-Y-M	medium	10	16.1	24	80	3.3
TINA-Y-W	wide	10	16.1	36	80	2.0
TINA-Y-WW	extra wide	10	16.1	50	80	1.0
TINA-Y-O	oval	10	16.1	20 + 40	75	2.0

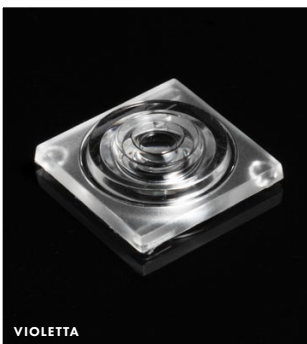
# Single lenses



ROSE-MRK



ROSE-UV



VIOLETTA

## ROSE

[www.ledil.com/rose](http://www.ledil.com/rose)

### ROSE

Compatibility: LED packages up to 5050 size

name	beam type	d	typ. FWHM	typ. eff.	typ. cd/lm
ROSE-RS	real spot	21.6 x 21.6	11	88	21.7
ROSE-SS	smooth spot	21.6 x 21.6	15	87	9.4
ROSE-D	diffused spot	21.6 x 21.6	16	85	7.1
ROSE-M	medium	21.6 x 21.6	30	83	2.5
ROSE-W	wide	21.6 x 21.6	51	81	1.1
ROSE-WW	extra wide	21.6 x 21.6	59	81	0.8
ROSE-WWW	extra <sup>2</sup> wide	21.6 x 21.6	80	84	0.4
ROSE-O	oval	21.6 x 21.6	43 + 15	81	3.1
ROSE-O-90	oval	21.6 x 21.6	13 + 44	81	3.6

### ROSE-MRK

Compatibility: Ultra-high-power LED packages up to 7070 size

ROSE-MRK-S	spot	21.6 x 21.6	30	80	2.1
ROSE-MRK-M	medium	21.6 x 21.6	43	84	2.0
ROSE-MRK-W	wide	21.6 x 21.6	62	84	0.7
ROSE-MRK-BW	batwing	21.6 x 21.6	68	84	0.7

### ROSE-UV

Compatibility: High-power UV-LED packages with dome up to 3535 size

name	beam type	h	d	typ. FWHM	typ. eff.
ROSE-UV-G3-S	spot	12.9	21.6 x 21.6	14	92
ROSE-UV-G3-SS	smooth spot	12.9	21.6 x 21.6	12	91
ROSE-UV-G3-M	medium	12.9	21.6 x 21.6	28	91
ROSE-UV-G3-M2	medium	12.9	21.6 x 21.6	26	90
ROSE-UV-G3-W	wide	12.9	21.6 x 21.6	40	88
ROSE-UV-G3-W2	wide	12.9	21.6 x 21.6	30	90
ROSE-UV-G3-O	oval	12.9	21.6 x 21.6	20 + 35	90

## VIOLETTA

[www.ledil.com/violetta](http://www.ledil.com/violetta)

Compatibility: Up to 7070 size LED packages or 2x2 LED cluster with up to 3030 package size

name	beam type	h	d	typ. FWHM	typ. cd/lm
VIOLETTA-S	spot	6.6	22 x 22	15	7.9
VIOLETTA-W	wide	6.5	22 x 22	60	0.9

NEW





## LAURA

[www.ledil.com/laura](http://www.ledil.com/laura)

### LAURA

Compatibility: Up to 5050 size LED packages

name	h	d	typ. FWHM	typ. eff.	typ. cd/lm
LAURA-RS	13	21.6 x 21.6	8	93	30.5
LAURA-SS	13	21.6 x 21.6	11	91	14.5
LAURA-D	13	21.6 x 21.6	15	88	6.2
LAURA-M	13	21.6 x 21.6	29	88	2.5
LAURA-W	13	21.6 x 21.6	42	88	1.7
LAURA-WW	13	21.6 x 21.6	66	86	0.7
LAURA-O	13	21.6 x 21.6	40 + 12	88	4.3

### LAURA-G2

Thinner holder design. Backwards compatible with previous generations.

Compatibility: Up to 5050 size LED packages

name	h	d	typ. FWHM	typ. eff.	typ. cd/lm
G2-LAURA-RS-P	13.1	21.6 x 21.6	8	93	33.2
G2-LAURA-SS-P	13.1	21.6 x 21.6	11	93	16.5
G2-LAURA-D-P	13.1	21.6 x 21.6	13	93	9.3
G2-LAURA-M-P	13.1	21.6 x 21.6	30	92	2.6
G2-LAURA-W-P	13.1	21.6 x 21.6	46	91	1.6
G2-LAURA-R-W-P	13.1	21.6 x 21.6	70	81	0.8
G2-LAURA-WW-P	13.1	21.6 x 21.6	66	86	0.7
G2-LAURA-R-XW-P	13.1	21.6 x 21.6	72	86	0.6
G2-LAURA-SS-WAS-P	13.1	21.6 x 21.6	asymm.	92	11.6
G2-LAURA-O-P	13.1	21.6 x 21.6	40 + 13	91	4.8
G2-LAURA-O-WAS-P	13.1	21.6 x 21.6	asymm.	84	2.6
G2-LAURA-O90-P	13.1	21.6 x 21.6	15 + 40	90	4.4

## LEILA

[www.ledil.com/leila](http://www.ledil.com/leila)

Compatibility: Optimized for 3535 high power LED packages and compatible with up to 5050 LED packages

### LEILA

name	h	d	typ. FWHM	typ. eff.	typ. cd/lm
-RS2	14.6	21.6	8,5	90	22.1
-RS **	14.6	21.6	9,6	94	23.1
-W **	14.6	21.6	42	90	1.6
-REC	14.6	21.6	37 + 26	84	2.4
-O	14.6	21.6	39 + 11	88	4.8
-O-90 **	14.6	21.6	11 + 39	89	4.6
-WAS	14.6	21.6	asymm.	84	4.0
-D **	14.6	21.6	12	90	10.0
-M **	14.6	21.6	25	92	4.8
-O-WAS **	14.6	21.6	asymm.	84	3.8

\*\* Compatible with LEILA-SC

### LEILA-G2

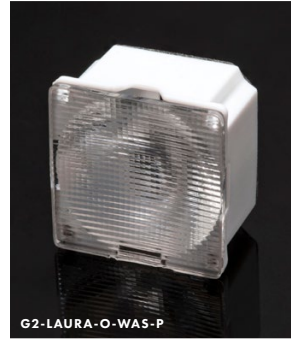
Thinner holder design. Backwards compatible with previous generations.

name	h	d	typ. FWHM	typ. eff.	typ. cd/lm
G2-LXP2-RS2-P	14.7	21.6	8.5	90	22.1
G2-LXP2-RS2	14.7	21.6	8.5	90	22.1
G2-LXP2-D-P	14.7	21.6	9.7	88	19.8
G2-LXP2-D	14.7	21.6	9.7	88	19.8
G2-LXP2-M-P	14.7	21.6	22	88	5.1
G2-LXP2-M	14.7	21.6	22	88	5.2

### LEILA-Y / LEILA-Y-SC2

name*	h	d	typ. FWHM	typ. eff.	typ. cd/lm
LEILA-Y-RS	14.8	21.6	13	83	11
LEILA-Y-SS	14.8	21.6	14	83	10
LEILA-Y-M	14.8	21.6	22	80	4.7
LEILA-Y-W	14.8	21.6	31	80	2.8
LEILA-Y-WW	14.8	21.6	55	81	1.0
LEILA-Y-O	14.8	21.6	15 + 45	75	2.8

\*Subject to the LED type, check [www.ledil.com/leila](http://www.ledil.com/leila) for actual values.



G2-LAURA-O-WAS-P



LAURA-RS



LEILA

LEILA-G2

New solderless connection for fast and secure lens installation with SOLDER-CLIP-2.

**NEW**



LEILA-Y-SC2

# Single lenses

## IRIE

[www.ledil.com/irie](http://www.ledil.com/irie)

Compatibility: Flat 2.75 x 2.0 mm high-power IR LEDs

name	h	d	typ. FWHM	typ. eff.	typ. cd/lm
IRIE-A	5.1	14 x 14	asymm.	94	1.5

## IRENE

[www.ledil.com/irene](http://www.ledil.com/irene)

Compatibility: Up to 3535 size IR LED packages

name	h	d	typ. FWHM	typ. eff.	typ. cd/lm
IRENE-IR-4	14.3	21.6	67 + 67	90	1
IRENE-IR-8	14.3	21.6	32 + 32	90	2.2
IRENE-IR-12	14.3	21.6	25 + 25	90	3
IRENE-IR-16	14.3	21.6	17 + 17	90	6
IRENE-IR-25	14.3	21.6	16 + 16	90	20

## IRIS

[www.ledil.com/iris](http://www.ledil.com/iris)

Compatibility: Up to 7070 size LED packages

name	h	d	typ. FWHM	typ. eff.	typ. cd/lm
IRIS-RS	29	38	5	93	66
IRIS-M	29	38	26	86	2.7
IRIS-O	29	38	39 + 28	84	1.9

## BILLIE

[www.ledil.com/billie](http://www.ledil.com/billie)

Compatibility: Up to 3535 size LED packages

name	beam type	h	d	typ. FWHM	typ. eff.	typ. cd/lm
BILLIE-A	asymm.	16.1	21.5	asymm.	88	2.1
BILLIE-B	asymm.	16.1	21.5	asymm.	93	2.2
BILLIE-S	asymm.	16.1	21.5	asymm.	88	4.8

## MIRA

[www.ledil.com/mira](http://www.ledil.com/mira)

Available with or without holder

Compatibility: Up to 7070 size high power LED packages and small COBs up to 12 mm LES size

name	beam type	h	d	typ. FWHM	typ. eff.	typ. cd/lm
MIRA-M	medium	16	35	28	83	2.1
MIRA-W	wide	16	35	38	82	1.5
MIRA-WW	extra wide	16	35	58	83	0.9

## EVA

[www.ledil.com/eva](http://www.ledil.com/eva)

Compatibility: Up to 7070 size LED packages

name	beam type	h	d	typ. FWHM	typ. eff.	typ. cd/lm
EVA-S	spot	16.4	37.7	10	93	11.9
EVA-SS	smooth spot	16.4	37.7	11	94	11.2
EVA-D	diffused spot	16.4	37.7	16	80	4.9
EVA-M	medium	16.4	37.7	24	89	3.2
EVA-W	wide	16.4	37.7	38	83	1.4
EVA-WW	extra wide	16.4	37.7	53	82	1.7
EVA-O	oval	16.4	37.7	38 + 17	85	3.1
EVA-O-90	oval	16.4	37.7	17 + 40	86	3.3



IRIE



IRENE-IR-16

IRIS-O



BILLIE

MIRA-M



EVA-SS



TITANIUM-M



EMILY-WWW



HEIDI-W2

## TITANIUM

[www.ledil.com/titanium](http://www.ledil.com/titanium)

Compatibility: Up to 3535 size LED packages

name	beam type	d	typ. FWHM	typ. eff.	typ. cd/lm
TITANIUM-O-SS	smooth spot	26	9	84	20
TITANIUM-O-M	medium	26	25	87	4.2
TITANIUM-O-W	wide	26	65	71	2
TITANIUM-O-O	oval	26	35 + 8	89	6.4

## EMILY

[www.ledil.com/emily](http://www.ledil.com/emily)

Compatibility: Up to 5050 size LED packages

name	h	d	typ. FWHM	typ. eff.	typ. cd/lm
EMILY-RS	14.8	26	8	90	29.5
EMILY-D	14.8	26	11	91	14
EMILY-SS	14.8	26	11	80	13.4
EMILY-M	14.8	26	18	91	7.4
EMILY-M2	14.8	26	29	90	3.1
EMILY-W	14.8	26	39	86	1.5
EMILY-WW	14.8	26	44	93	1.7
EMILY-WWW	14.8	26	58	86	1
EMILY-SS-WAS	14.8	26	12	90	12
EMILY-O-WAS	14.8	26	43 + 10	87	3.6
EMILY-O	14.8	26	44 + 10	89	4.5
EMILY-O-90	14.8	26	45 + 10	89	4.2

## HEIDI

[www.ledil.com/heidi](http://www.ledil.com/heidi)

Compatibility: Up to 3535 size LED packages

name	h	d	typ. FWHM	typ. eff.	typ. cd/lm
HEIDI-RS	11.7	21.6	8	92	21.8
HEIDI-D	11.9	21.6	10	90	14.8
HEIDI-SS	11.7	21.6	15	90	6.8
HEIDI-M	11.9	21.6	26	89	3.8
HEIDI-W	11.7	21.6	32	87	2.6
HEIDI-W2	12.0	21.6	45	80	1.1
HEIDI-O	11.9	21.6	49 + 11	87	4.5
HEIDI-O-90	12.1	21.6	13 + 44	87	4.7
HEIDI-REC-90	12.8	21.6	36 + 57	78	1.3

# Single lenses

NEW

## BELLA

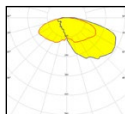
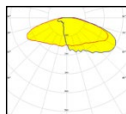
[www.ledil.com/bella](http://www.ledil.com/bella)



NEW

Compatibility: Up to 7070 size LED packages

name	beam type	h	d	typ. FWHM	typ. eff.	typ. cd/lm
BELLA-SQ-HC	half-C	11.9	25 x 25	asymm.	87	0.4
BELLA-SQ-HVSM	half-VSM	11.9	25 x 25	asymm.	87	0.4



BELLA-SQ-HC

BELLA-SQ-HVSM

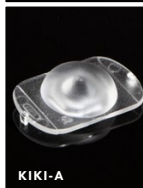


## KIKI

[www.ledil.com/kiki](http://www.ledil.com/kiki)

Compatibility: Up to 3535 size LED packages

name	beam type	h	d	typ. FWHM	typ. eff.	typ. cd/lm
KIKI-A	wide area lighting	5.9	21.6 x 14	163	92	0.3



KIKI-A



JULIA-A

## JULIA

[www.ledil.com/julia](http://www.ledil.com/julia)

Compatibility: Up to 3535 size LED packages

name	beam type	h	d	typ. FWHM	typ. eff.	typ. cd/lm
JULIA-A	wide area lighting	4.8	18.8	88 + 160	90	0.2



LOTTA-A

## LOTTA

[www.ledil.com/lotta](http://www.ledil.com/lotta)

Compatibility: Up to 3535 size LED packages

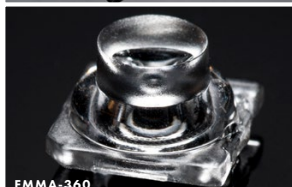
name	beam type	h	d	typ. FWHM	typ. eff.	typ. cd/lm
LOTTA-A	wide area lighting	3.6	19.6 x 15.4	168	88	0.3

## EMMA

[www.ledil.com/emma](http://www.ledil.com/emma)

Compatibility: Up to 3535 size LED packages

name	beam type	h	d	typ. FWHM	typ. eff.	typ. cd/lm
EMMA-360	side emitter	5.7	9.9 x 9.9	170	92	0.4



EMMA-360

## STRADA-S

[www.ledil.com/strada-s](http://www.ledil.com/strada-s)

Compatibility: Up to 3535 size LED packages

name	beam type	h	d	typ. FWHM	typ. eff.	typ. cd/lm
STRADA-S	side emitter	6.9	19.6 x 15.5	144 + 170	93	0.4



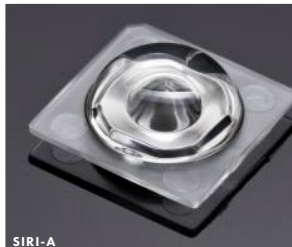
STRADA-S

## SIRI

[www.ledil.com/siri](http://www.ledil.com/siri)

Compatibility: Up to 3535 size LED packages

name	beam type	h	d	typ. FWHM	typ. eff.	typ. cd/lm
SIRI-A	wide area lighting	4.2	13.9 x 13.9	74 + 134	95	0.3
SIRI-DOME	LED cover, no effect on the light	4.9	13.9 x 13.9	144	97	0.2
SIRI-DIFF		4.9	13.9 x 13.9	144	95	0.2



SIRI-A



LEIA



HELENA-A



EMERALD-ER1



ZOE-30-ZOOM

## LEIA

[www.ledil.com/leia](http://www.ledil.com/leia)

Compatibility: Designed for single chip 3535 LED packages, compatible with up to 7070 size LED packages

name	beam type	h	d	typ. FWHM	typ. cd/lm
LEIA-S	ultra-narrow spot	51.3	46.7	3	68.0
LEIA-S + LEIA-SUB-O	narrow oval	53	46.7	50 + 5	5.0
<b>additional accessories</b>					
LEIA-SUB-O	narrow oval sublens				

## HELENA

[www.ledil.com/helena](http://www.ledil.com/helena)

Compatibility: All LED types

name	beam type	h	d	typ. FWHM	typ. eff.	typ. cd/lm
HELENA-A	medium	11	72.8	19	68	4.0
HELENA-B	medium	11	72.8	24	74	2.1

## EMERALD

[www.ledil.com/emerald](http://www.ledil.com/emerald)

Compatibility:

- EMERALD: Up to 5050 size LED packages
- EMERALD-MAXI: Up to 7070 size LED packages

### EMERALD

name	beam type	h	d	typ. FWHM	typ. eff.	typ. cd/lm
EMERALD-A	rectangular	7.3	21.6	150 x 20	89	1.9
EMERALD-ER1	rectangular	7.8	21.6	155 x 30	86	1.6
EMERALD-ER2	rectangular	9.3	21.6	130 x 20	86	1.8
EMERALD-AP	wide area lighting	6.9	21.6	asymm.	89	0.4

### EMERALD-MAXI

EMERALD-MAXI-A	wide area lighting	12.2	33 x 25	asymm.	92	2.0
----------------	--------------------	------	---------	--------	----	-----

## ZOE

[www.ledil.com/zoe](http://www.ledil.com/zoe)

Compatibility: Optimized for 3535 LED packages and compatible with up 7070 LED packages

name	beam type	h	d	typ. FWHM	typ. eff.	typ. cd/lm
ZOE-30-ZOOM	zoom	20.3	31.6	13 to 42	75	10-1.5

# Single lenses



## FLARE

[www.ledil.com/flare](http://www.ledil.com/flare)

Compatibility:

- FLARE-MINI: Up to 3535 size packages
- FLARE: Up to 5050 size packages
- FLARE-MAXI: Up to 7070 size packages

### FLARE

name	h	d	typ. FWHM	typ. eff.	typ. cd/lm
FLARE-B	12.69	29 x 23	102 x 11	93	1.6
FLARE-C	14.55	24.5 x 24.5	87 x 8	93	3.2
FLARE-C-D	14.55	24.5 x 24.5	95 x 21	93	1.0

### FLARE-MINI

FLARE-MINI-AD	8.6	16	98 x 19	94	1.1
FLARE-MINI-AD-PIN	8.6	16	98 x 19	94	1.1
FLARE-MINI-A	8.6	16	106 x 20	94	1.1
FLARE-MINI-A-PIN	8.6	16	106 x 20	94	1.0

### FLARE-MAXI

FLARE-MAXI	16.7	33.9 x 33.3	99 x 13	94	2.3
FLARE-MAXI-D	16.7	33.9 x 33.3	108 x 15	94	1.8
FLARE-MAXI-T	15.5	43 x 28.4	82 + 21	93	1.3

## CRYSTAL

[www.ledil.com/crystal](http://www.ledil.com/crystal)

Compatibility: Up to 7070 size LED packages

name	beam type	h	d	typ. FWHM	typ. eff.	typ. cd/lm
CRYSTAL-RS	real spot	28.7	49.7	5.1	89	679
CRYSTAL-MINE	spot	28.7	49.7	4.9	90	59.6

## SEANNA

[www.ledil.com/seanna](http://www.ledil.com/seanna)

Compatibility: Up to 7070 size LED packages

name	beam type	h	d	typ. FWHM	typ. eff.	typ. cd/lm
SEANNA-A	real spot	79	152.6	2.3	87	500

## FILIPPA

[www.ledil.com/filippa](http://www.ledil.com/filippa)

Compatibility: Up to 3535 size LED packages

name	beam type	h	d	typ. FWHM	typ. eff.
FILIPPA-STVZO	asymm.	17.5	32.9	10 + 20	83

FWHM angles, efficiencies and cd/lm values contained herein are typical values. Actual measured values depend of the specific LED/optic combination. Go to [ledil.com](http://ledil.com) for LED specific values and product datasheets.

NEW



## GABRIELLA

[www.ledil.com/gabriella](http://www.ledil.com/gabriella)

TESTED FOR  
TUNABLE  
WHITE

Compatibility: Optimized for 5050 sized and compatible with 7070 RGB LEDs

### GABRIELLA-45

name		d	h	typ. fwhm	typ. eff.	typ.cd/lm
GABRIELLA-45-SS	<b>NEW</b>	45	29	11	90	2.1
GABRIELLA-45-S		45	29	9	90	24.0
GABRIELLA-45-M		45	29	25	86	5.0
GABRIELLA-45-W		45	29	36	81	2.2

### GABRIELLA-MIDI

GABRIELLA-MIDI-S		38	24	11	91	11.5
GABRIELLA-MIDI-M		38	24	24	88	4.0
GABRIELLA-MIDI-W		38	24	35	85	2.2
GABRIELLA-MIDI-O		38	24	11 + 33	87	6.2

## CORAL

[www.ledil.com/coral](http://www.ledil.com/coral)

TESTED FOR  
TUNABLE  
WHITE

Compatibility: Optimized for single and clustered high-power LEDs

name		d	h	typ. FWHM	typ. eff.	typ.cd/lm
CORAL-IP-OW	<b>NEW</b>	38	24	115 + 6	91	65

NEW

## RGBX

[www.ledil.com/rgbx](http://www.ledil.com/rgbx)

TESTED FOR  
TUNABLE  
WHITE

Compatibility: Up to 5050 size RGB LEDs

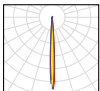
name		d	h	typ. FWHM	typ. eff.	typ.cd/lm
RGBX-SS		28	30	20	85	3.8
RGBX-M		28	30	30	70	1.3
RGBX2-S		28	30	20	77	4.6
RGBX2-M		28	30	34	68	1.5
RGBX2-O		28	30	48 + 24	66	1.5

## SURI

[www.ledil.com/suri](http://www.ledil.com/suri)

Compatibility: Optimized for 3535 and compatible up to 7070 size LED packages

name		d	h	typ. FWHM	typ. eff.	typ.cd/lm
SURI-RS		38	24	6	91	65



SURI-RS

# Single lenses



Low profile lens with wide selection of beams for slim track and downlights.

## AMY

[www.ledil.com/amy](http://www.ledil.com/amy)

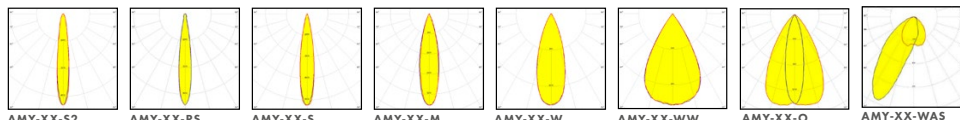


### Compatibility:

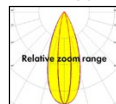
- Ø35 mm optimized for LES 6 mm
- Ø45 mm and Ø50 mm optimized for LES 10 mm
- Ø 70 mm optimized for LES 14.5 mm
- Ø 110 mm optimized for LES 14.5 mm
- LEDiL HEKLA (with holder C)
- B+W and BJB connectors (with holder B)
- AMY-35, -45, -50, -70: 35 mm B+W and BJB connectors
- AMY-110: 50 mm B+W and BJB connectors

name	beam type	d	h	typ. FWHM	typ. eff.	typ. cd/lm
AMY-XX-S2	spot	50	10.7	15	90	4.2
AMY-XX-RS	<b>NEW</b> real spot	50 / 70	10.8 / 11.8	15	90	9.0
AMY-XX-S	spot	35 / 45 / 50 / 70 / 110	8.5 / 10.0 / 10.8 / 12.7 / 23.3	18	90	6.7
AMY-XX-M	medium	35 / 45 / 50 / 70 / 110	8.5 / 10.0 / 10.9 / 12.5 / 23.5	24	92	4.0
AMY-XX-W	wide	35 / 45 / 50 / 70 / 110	8.5 / 10.0 / 11.0 / 13.0 / 23.6	36	89	2.1
AMY-XX-WW	extra wide	35 / 45 / 50 / 70 / 110	8.5 / 10.0 / 11.0 / 12.8 / 23.4	60	90	1.0
AMY-XX-O	oval	35 / 50 / 70	8.5 / 11.0 / 13.0	20 + 55	87	1.9
AMY-XX-WAS	<b>NEW</b> asymm.	50 / 70 / 110	13.1 / 14.9 / 22.10	asymm.	81	1
AMY-XX-ZOOM	<b>NEW</b> zoom	25 / 35 / 45 / 50 / 70	11.9* / 16.5* / 20.4* / 24.4* / 29.6*	20 to 50	80	4.1-1.0

\* Measured from the heat sink: Height comprises holder, lens, and sublens measurement



### AMY-XX-ZOOM



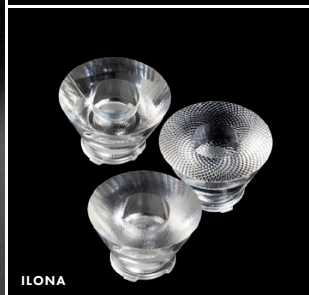
typ. FWHM: 20°-50°

FWHM angles, efficiencies and cd/lm values contained herein are typical values. Actual measured values depend of the specific LED/optic combination. Go to [ledil.com](http://ledil.com) for LED specific values and product datasheets.





ILONA-ZOOM



ILONA

## YASMEEN

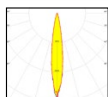
[www.ledil.com/yasmeen](http://www.ledil.com/yasmeen)

TESTED FOR  
**TUNABLE  
WHITE** HEKLA

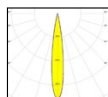
### Compatibility:

- Ø35 mm: LES 3-6 mm
- Ø50 mm: LES 6-10 mm
- Ø70 mm: LES 10-14.5 mm
- LEDiL HEKLA (with holder C), page 43
- 35 mm B+W and BJB connectors (with holder B)

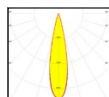
name	d	h	typ. FWHM	typ. eff.	typ.cd/lm
YASMEEN-XX-RS <b>NEW</b>	70	39.9	10	90	15
YASMEEN-XX-NS <b>NEW</b>	35	18	14	89	13.6
YASMEEN-XX-S	35 / 50 / 70	18 / 30.5 / 39.9	15	85	8.0
YASMEEN-XX-M	35 / 50 / 70	18 / 30.5 / 39.9	24	85	5.0
YASMEEN-XX-W	35 / 50 / 70	18 / 30.5 / 39.9	36	85	2.0
YASMEEN-XX-WW	35 / 50 / 70	18 / 30.5 / 39.9	60	85	1.0
YASMEEN-XX-ZOOM	52.5 / 72.9	37 / 49.1	15 to 45	80	6-1



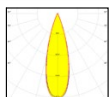
YASMEEN-70-RS



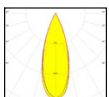
YASMEEN-35-NS



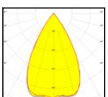
YASMEEN-35/50/70-S



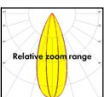
YASMEEN-35/50/70-M



YASMEEN-35/50/70-W



YASMEEN-35/50/70-WW



YASMEEN-50/70-ZOOM  
typ. FWHM: 15°-45°

## ILONA

[www.ledil.com/ilona](http://www.ledil.com/ilona)

TESTED FOR  
**TUNABLE  
WHITE** HEKLA

### Compatibility:

- Optimized for 6-9 mm and compatible with up to 14.5 mm LES size COBs
- LEDiL HEKLA, page 43

name	d	h	typ. FWHM	typ. eff.	typ.cd/lm
ILONA-RS	50	29.2	10	94	15.0
ILONA-SS	50	29.3	14	90	12.0
ILONA-M	50	29.7	25	92	4.5
ILONA-W	50	29.7	36	89	2.0
ILONA-WW	50	29.4	57	84	1.0
ILONA-ZOOM	52.5	33.2	13 to 48	82	9.5-1.0

# Single lenses



RONDA



MOLLY



## RONDA

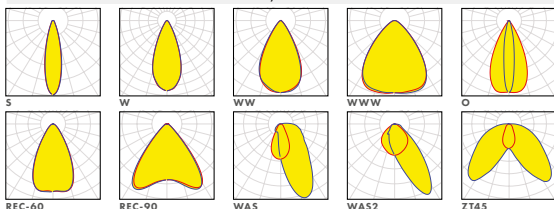
[www.ledil.com/ronda](http://www.ledil.com/ronda)



### Compatibility:

- LES sizes up to 16 mm, asymmetric up to 14.5 mm
- LEDiL HEKLA (with holder C), page 43
- 50 mm B+W and BJB connectors (with holder B)
- LEDiL A-interface baseparts (with holder A), page 42
- B+W connectors with LEDiL A-interface (with holder A)

name	beam type	d (HLD A/B)	d (HLD C)	typ. FWHM	typ. eff.	typ. cd/lm
RONDA-S	spot	69.9	53.9	27	85	1.8
RONDA-W	wide	69.9	53.9	43	87	1.6
RONDA-WW	extra wide	69.9	53.9	62	89	0.8
RONDA-WWW	extra <sup>2</sup> wide	69.9	53.9	90	87	0.5
RONDA-REC-60	rectangular	69.9	53.9	58 + 58	89	0.8
RONDA-REC-90	rectangular	69.9	53.9	80	87	0.5
RONDA-O	oval	69.9	53.9	49 + 30	86	1.4
RONDA-WAS	asymm.	69.9	53.9	asymm.	86	1.1
RONDA-WAS2	asymm.	69.9	53.9	asymm.	89	0.9
RONDA-ZT45	double asymmetric	69.9	53.9	asymm.	85	0.5



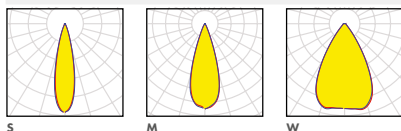
## MOLLY

[www.ledil.com/molly](http://www.ledil.com/molly)

### Compatibility:

- Optimized for 14.5 mm LES and compatible up to 19 mm LES
- LEDiL A-interface baseparts, page 42
- B+W connectors with LEDiL A-interface
- 50 mm B+W and BJB connectors (with MOLLY-B variants)

name	beam type	h	d	typ. FWHM	typ. eff.	typ. cd/lm
MOLLY-S	spot	24.8	69.8	25	87	4
MOLLY-M	medium	23.6	69.8	37	89	2
MOLLY-W	wide	22.1	69.8	60	60	1





CARMEN-50



WINNIE-M



WINNIE-M-C

## CARMEN

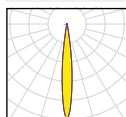
[www.ledil.com/carmen](http://www.ledil.com/carmen)



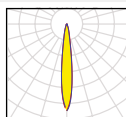
### Compatibility:

- CARMEN-50: LES sizes up to 10 mm
- CARMEN-70: LES sizes up to 11 mm
- LEDiL HEKLA (with holder C), page 43
- 40 mm BJB connectors (with holder B)
- CARMEN-70-SHD: CARMEN-RS and -SS

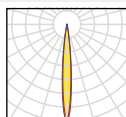
name	beam type	h	d	typ. eff.	typ. cd/lm
CARMEN-50/70-RS	real spot	25.5 / 36.3	50 / 70	70	11
CARMEN-50/70-S	spot	25.5 / 36.3	50 / 70	75	6
CARMEN-50/70-M	medium	25.5 / 36.3	50 / 70	80	2.2
CARMEN-70-M2	medium	36.3	70	70	4
CARMEN-50/70-W	wide	25.5 / 36.3	50 / 70	80	1,5
CARMEN-50/70-RS-WHT	real spot	25.5 / 36.3	50 / 70	85	11
CARMEN-50/70-S-WHT	spot	25.5 / 36.3	50 / 70	88	6
CARMEN-50/70-M-WHT	medium	25.5 / 36.3	50 / 70	88	2.2
CARMEN-50/70-W-WHT	wide	25.5 / 36.3	50 / 70	88	1.5



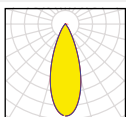
RS



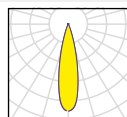
S



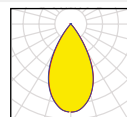
SS



M



M2



W

## WINNIE

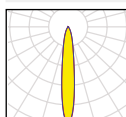
[www.ledil.com/winnie](http://www.ledil.com/winnie)



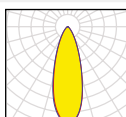
### Compatibility:

- COBs with LES sizes up to 21 mm
- LEDiL HEKLA (with holder C), page 43
- B+W mica connectors (with WINNIE holder)

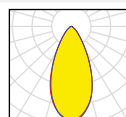
name	beam type	h	d	typ. FWHM	typ. eff.	typ. cd/lm
WINNIE-S	spot	19.3	49.8	22	88	3.4
WINNIE-M	medium	19.3	49.8	35	86	1.8
WINNIE-W	wide	19.3	49.8	50	88	1.3
WINNIE-WW	extra wide	19.3	49.8	70	83	0.7
WINNIE-O	oval	19.3	49.8	63 + 24	89	1.5



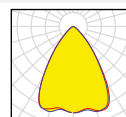
S



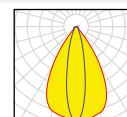
M



W



WW



O

# Single lenses



SAGA-HB-IP-WHT



ZORYA-MINI / ZORYA



OLGA-S

## SAGA

[www.ledil.com/saga](http://www.ledil.com/saga)



### Compatibility:

- COB's with LES sizes up to 14 mm
- 3rd party connectors from Bender+Wirth

name	beam type	h	d	typ. FWHM	typ. eff.	typ. cd/lm
SAGA-HB-IP-WHT	high bay	12	50	62	90	0.8

## ZORYA

[www.ledil.com/zorya](http://www.ledil.com/zorya)



### Compatibility:

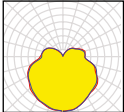
- ZORYA-SC: LES sizes from 6 mm to 24 mm
- LEDiL HEKLA (with adapter C), page 43
- 50 mm B+W and BJB connectors (with adapter B)
- ZORYA-MINI: For high power LEDs up to 7070 size packages

### ZORYA

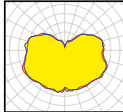
name		h	d	typ. eff.	typ. FWHM	typ. cd/lm
ZORYA-SC		35	55	94	245	0.15
ZORYA-SC-B	BJB 47.319.2021 compatible	35	55	94	245	0.15
ZORYA-SC-C	HEKLA compatible	35	55	94	245	0.15

### ZORYA-MINI

name	h	d	typ. eff.	typ. FWHM	typ. cd/lm
ZORYA-MINI	14.6	22	94	145	0.15



ZORYA-SC



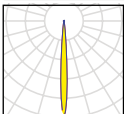
ZORYA-MINI

## OLGA

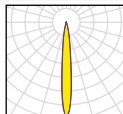
[www.ledil.com/olga](http://www.ledil.com/olga)

### Compatibility: Up to 7070 size LED packages

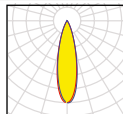
name	d	h	typ. FWHM	typ. eff.	typ.cd/lm
OLGA-RS	30 / 32	18.5 / 19.1	9	92	25.0
YASMEEN-30-RS	30 / 32	18.2 / 18.9	14	90	22.7
OLGA-S	30 / 32	18.5 / 19.1	11	87	13.6
OLGA-M	30 / 32	18.5 / 19.1	25	85	2.8
OLGA-W	30 / 32	18.5 / 19.1	40	89	2.2
OLGA-WW	30 / 32	18.5 / 19.1	60	85	0.8
OLGA-WAS	30 / 32	18.5 / 19.1	asymm.	81	1.1
OLGA-O	30 / 32	18.5 / 19.1	10 + 40	90	5.0



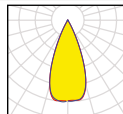
RS



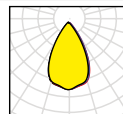
S



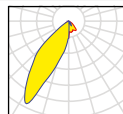
M



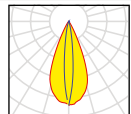
W



WW



WAS



O

## SATU

[www.ledil.com/satu](http://www.ledil.com/satu)

Compatibility: Up to 3535 size LED packages

name	beam type	LEDs	h	d	typ. FWHM	typ. eff.	typ. cd/lm
SATU-S	spot	3	8.9	21.8	19	90	4.9
SATU-M	medium	3	8.9	21.8	27	91	2.9
SATU-W	wide	3	8.9	21.8	33	86	1.9
SATU-O	oval	3	8.9	21.8	42 + 22	86	2.5

## CUTE

[www.ledil.com/cute](http://www.ledil.com/cute)

### CUTE-3

Compatibility: Up to 5050 size packages

name	beam type	LEDs	h	d	typ. FWHM	typ. eff.	typ. cd/lm
CUTE-3-S	spot	3	15	35	11	94	5.7
CUTE-3-SS	SS	3	15	35	12	90	11.3
CUTE-3-M	medium	3	15	35	24	88	3.8
CUTE-3-W	wide	3	15	35	39	83	1.6
CUTE-3-WW	extra wide	3	15	35	58	93	0.8

## GT3

[www.ledil.com/gt3](http://www.ledil.com/gt3)

Compatibility: Up to 3535 size LED packages

name	beam type	LEDs	h	d	typ. FWHM	typ. eff.	typ. cd/lm
GT3-S	spot	3	9	35	18	90	4.5
GT3-M	medium	3	9	35	30	89	2.2
GT3-W	wide	3	9	35	40	88	1.6
GT3-WW	extra wide	3	9	35	47	90	1.1

## GT4

[www.ledil.com/gt4](http://www.ledil.com/gt4)

Compatibility: Up to 3535 size LED packages

name	beam type	LEDs	h	d	typ. FWHM	typ. eff.	typ. cd/lm
GT4-S	spot	4	9	35	21	90	3.3
GT4-M	medium	4	9	35	28	88	2.5
GT4-W	wide	4	9	35	38	89	1.7
GT4-WW	extra wide	4	9	35	53	90	1.1

## TUIJA

[www.ledil.com/tuija](http://www.ledil.com/tuija)

Compatibility: Up to 3535 size LED packages

name	beam type	LEDs	h	d	typ. FWHM	typ. eff.	typ. cd/lm
TUIJA-3-SS	smooth spot	3	14.5	50	12	90	12.9
TUIJA-3-M	medium	3	14.5	50	16	84	5.6
TUIJA-3-M2	medium	3	14.5	50	35	87	2
TUIJA-3-W	wide	3	14.5	50	53	86	0.9

## SANDRA

[www.ledil.com/sandra](http://www.ledil.com/sandra)

Compatibility: Up to 3535 size LED packages

name	beam type	LEDs	h	d	typ. FWHM	typ. eff.	typ. cd/lm
SANDRA-12-S	spot	12	11.1	67	14	91	13.2
SANDRA-12-M	medium	12	11.1	67	28	88	2.4
SANDRA-12-W	wide	12	11.1	67	31	88	2.4
SANDRA-12-O	oval	12	11.1	67	42 + 19	90	2.8



SATU-O



CUTE



GT3-M



SANDRA-12-O

# Multi-lens arrays

## ANGIE

[www.ledil.com/angie](http://www.ledil.com/angie)

Compatibility: Up to 3535 size LED packages

name	beam type	LEDs	h	d	typ. FWHM	typ. eff.	typ. cd/lm
ANGIE-S	spot		10.7	34	12	93	11.8
ANGIE-M2	medium		10.7	34	26	88	3.3
ANGIE-W	wide		10.7	34	29	84	2.4

## TAMPA

[www.ledil.com/tampa](http://www.ledil.com/tampa)

Compatibility: Up to 3535 size LED packages

name	beam type	LEDs	h	d	typ. FWHM	typ. eff.
NIS83-MX-7-M	medium	7	11.4	38	20	90
NIS83-MX-7-W	wide	7	11.4	38	37	89
NIS83-MX-7-WW	extra wide	7	11.4	38	57	87

## ANNA

[www.ledil.com/anna](http://www.ledil.com/anna)

Compatibility: Up to 3535 size LED packages

### ANNA-40

name	beam type	LEDs	d	h	typ. FWHM	typ. eff.	typ. cd/lm
ANNA-40-5-S		5					
ANNA-40-6-S	spot	6	40	10.7	15	91	8.5
ANNA-40-7-S		7					
ANNA-40-6-M		6					
ANNA-40-7-M	medium	7	40	10.7	22	88	3.7
ANNA-40-7-M2	medium	7	40	10.7	25	87	3.2
ANNA-40-4-W		4					
ANNA-40-6-W	wide	6	40	10.7	32	86	1.9
ANNA-40-7-W		7					
ANNA-40-7-WW	extra wide	7	40	12.5	64	90	0.9

### ANNA-50

ANNA-50-3-S	spot	3					
ANNA-50-7-S		7	50	10.7	15	91	8.5
ANNA-50-3-M		3					
ANNA-50-7-M	medium	7	50	10.7	22	88	3.7
ANNA-50-3-W		3					
ANNA-50-4-W		4					
ANNA-50-6-W	wide	6	50	10.7	32	86	1.9
ANNA-50-7-W		7					

## VIRPI

[www.ledil.com/virpi](http://www.ledil.com/virpi)

Compatibility: Up to 3535 size LED packages

name	beam type	LEDs	h	d	typ. FWHM	typ. eff.	typ. cd/lm
VIRPI-S	spot	25	9.4	75 x 75	15	94	7.5
VIRPI-M	medium	25	9.4	75 x 75	29	92	2.7
VIRPI-W	wide	25	9.4	75 x 75	42	91	1.6

## IDA

[www.ledil.com/ida](http://www.ledil.com/ida)

Compatibility: Up to 3535 size mid-power LED packages

name	beam type	LEDs	h	d	typ. FWHM	typ. eff.
IDA16-M	narrow	16	9.2	50 x 50	40	92
IDA16-WW	very wide	16	9.2	50 x 50	71	93
IDA16-O	oval	16	9.2	50 x 50	90 + 33	92



ANGIE-S



NIS83-MX-7-M



ANNA-40-7-M



IDA16-WW

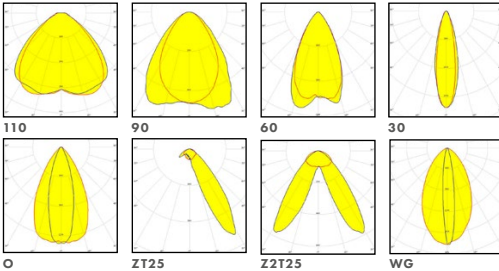
## LINNEA

[www.ledil.com/linnea](http://www.ledil.com/linnea)

### LINNEA-GC2

LINNEA-GC2 delivers low UGR for high visual comfort applications with its uniformly lit, microprismatic lens surface.  
Compatibility: Optimized for up to 24 mm wide mid-power PCBs and 1.0 mm thick profiles.

name	h	d	typ. FWHM	typ. eff.	typ. cd/lm
LINNEA-GC2-110	15.2	284 x 43	110	88	0.35
LINNEA-GC2-90	15.2	284 x 43	90	88	0.5
LINNEA-GC2-60	15.2	284 x 43	60	93	0.9
LINNEA-GC2-30	15.2	284 x 43	30	92	2.5
LINNEA-GC2-O	15.2	284 x 43	30 + 60	93	1.3
LINNEA-GC2-ZT25	15.2	284 x 43	asymm.	86	1.1
LINNEA-GC2-Z2T25	15.2	284 x 43	asymm.	86	0.6
LINNEA-GC2-WG	15.2	284 x 43	asymm.	90	1.8



LINNEA-GC2



LINNEA-GC

### LINNEA-GC

Compatibility: Optimized for up to 24 mm wide mid-power PCBs and 1.0 mm thick profiles.  
Compatible with same luminaires as basic LINNEA but requires a new PCB.

LINNEA-GC-90	9.5	285 x 40	90	85	0.5
LINNEA-GC-60	12.2	285 x 40	60	93	0.8
LINNEA-GC-O	12.8	285 x 40	73 + 43	91	0.8



LINNEA-2R

### LINNEA

The regular LINNEA and its clips are designed to be fastened on 1.0 mm thick and LINNEA-B for 0.5 mm thick installation surfaces.  
Compatibility: Optimized for the most common Zhaga mid-power 20 and 24 mm wide PCBs

LINNEA-60 *	12	285 x 40	60	85	0.6
LINNEA-90 *	9.5	285 x 40	90	85	0.4
LINNEA-O *	12	285 x 40	35 + 70	81	0.7
LINNEA-Z2T25 *	10.3	285 x 40	asymm.	87	0.5
LINNEA-ZT25 *	9.5	285 x 40	asymm.	80	0.7
LINNEA-UP	10.3	285 x 40	asymm.	79	0.3

\* B-version available

### LINNEA-2R

LINNEA-2R-O	8.6	567 x 40	90 + 30	94	1
-------------	-----	----------	---------	----	---



LINNEA

### LILIAN

[www.ledil.com/lilian](http://www.ledil.com/lilian)

Compatibility: Optimized for up to 20 mm wide high-power and CSP PCBs and for 1.0 mm thick profiles

name	h	d	typ. FWHM	typ. eff.	typ. cd/lm
LILIAN-ON	14.8	286 x 27	10 + 60	92	1.5

### SHELLY

[www.ledil.com/shelly](http://www.ledil.com/shelly)

Compatibility: Up to 3535 size LED packages

name	h	d	typ. FWHM	typ. eff.	typ. cd/lm
SHELLY-T-6X1-N	7	119.8 x 19.6	asymm.	94	0.5
SHELLY-T-6X1-WAS	7.6	119.8 x 19.6	asymm.	94	0.9

# Linear lenses

## FLORENCE

www.ledil.com/florence

### FLORENCE-3R

Compatibility: Range of 3 x 11 high-power LED modules with up to 5050 size packages

name	beam type	typ. FWHM	typ. eff.	typ. cd/lm
FLORENCE-Z30	medium	29	94	2.2
FLORENCE-Z60	wide	58	88	0.8
FLORENCE-Z90	extra wide	92	86	0.4
FLORENCE-Z90-B	extra wide	92	90	0.4
FLORENCE-O	oval	84 + 35	89	0.7
FLORENCE-ZT25	asymmetric	asymm.	94	0.6
FLORENCE-ZT25-S	single-sided asymmetric oval	asymm.	94	0.6
FLORENCE-3R-SHD-BLK		black shade to obtain lower UGR		
FLORENCE-3R-SHD-GR		grey shade to obtain lower UGR		
FLORENCE-3R-SHD-WHT		white shade		

### FLORENCE2

Compatibility: All Zhaga 3R PCBs including 2ff PCBs

FLORENCE2-Z90	extra wide	85	94	0.6
FLORENCE2-Z60	wide	52	92	1.2

### FLORENCE-3R-IP

Compatibility: Range of 3 x 11 mid-power LED modules up to 5630 size packages

FLORENCE-3R-IP-Z60	wide	60	86	0.7
FLORENCE-3R-IP-Z90	extra wide	90	88	0.4
FLORENCE-3R-IP-O	oval	84 + 40	86	0.7

### FLORENCE-1R-GC

Compatibility: Mid-power LEDs up to 5630 package size

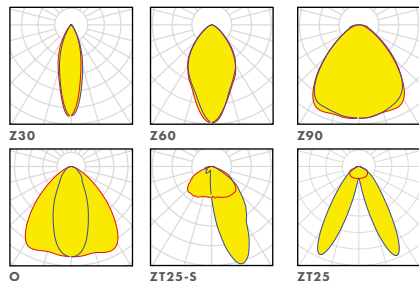
FLORENCE-1R-GC-Z60	wide	70	94	0.7
FLORENCE-1R-GC-Z90	rectangular	90	94	0.5
FLORENCE-1R-GC-ZT25	asymmetric	asymm.	92	0.8

### FLORENCE-1R

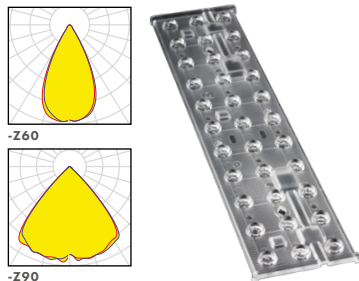
Compatibility: Mid-power LEDs up to 5630 package size

FLORENCE-1R-Z60	medium	58 + 111	94	0.6
FLORENCE-1R-Z90	extra wide	90 + 110	94	0.4
FLORENCE-1R-ZT25	asymmetric	asymm.	86	1.0
FLORENCE-1R-ZZT25	double asymmetric	106 + 80	92	0.5
FLORENCE-1R-O	oval	96 + 32	94	0.9
FLORENCE-1R-MAXI-WG	asymmetric	asymm.	94	1.4
FLORENCE-1R-UP	wide area lighting	asymm.	90	0.4
FLORENCE-1R-UP-D	wide area lighting	asymm.	90	0.3
FLORENCE-1R-CLIP-A		clip for installation with 40 mm wide boards		
FLORENCE-1R-CLIP-B		clip for installation on a profile		
FLORENCE-1R-CLIP-C		clip for fastening of FLORENCE-1R optics and 24 mm wide Zhaga modules		

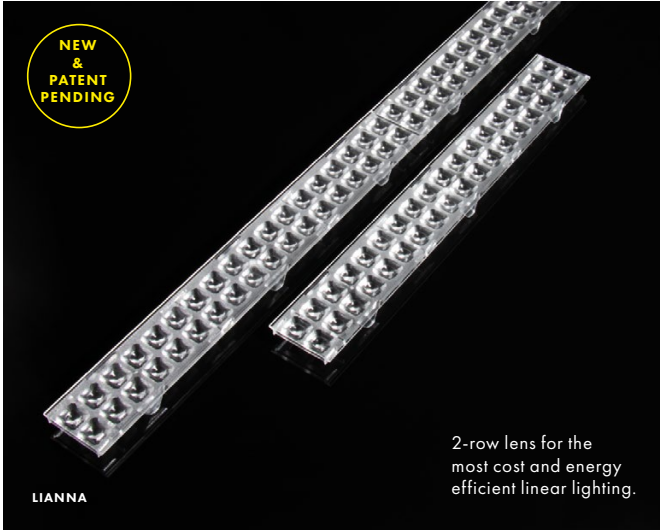
### FLORENCE-3R



### FLORENCE2







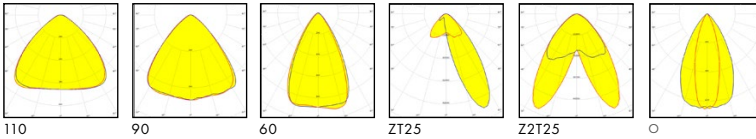
## LIANNA

[www.ledil.com/lianna](http://www.ledil.com/lianna)

Compatibility: Two-row PCB modules with 3030 and 2835 LEDs. Can be used with single LEDs or 1x2 clusters.

name		beam type	typ. FWHM	typ. eff.	typ. cd/lm	Sizes
LIANNA-2R-110	COMING	extra wide	110	90	0.3	d: 40 x 1120 mm   h: 10.70 mm
LIANNA-2R-90	NEW	extra wide	90	90	0.5	d: 40 x 1400 mm   h: 10.70 mm
LIANNA-2R-60	NEW	wide	60	90	1.0	d: 40 x 1680 mm   h: 10.70 mm
LIANNA-2R-ZT25	COMING	asymm.	asymm.	82	2.1	
LIANNA-2R-Z2T25	COMING	double asymm.	asymm.	93	4.1	
LIANNA-2R-O	COMING	oval	60 + 25	92	1.7	

NEW

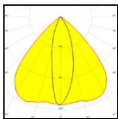


## ISLA

[www.ledil.com/isla](http://www.ledil.com/isla)

Compatibility: Optimised for 5050 flat package LEDs.  
Shades available as accessories in black, white and metal with gloss finish.

name		beam type	h	d	typ. FWHM	typ. eff.	typ. cd/lm
ISLA-6X1-OA	NEW	wide	14.2	276 x 36	85 + 27	88	1.0



OA

NEW

# Linear lenses



## CLAUDIA

[www.ledil.com/claudia](http://www.ledil.com/claudia)

Compatibility: Optimized for 2835 and compatible with up to 5630 size mid-power LED packages

name	h	d	typ. FWHM	typ. eff.	typ. cd /lm
CLAUDIA-60	9.6	279.3 x 29.3	60	94	1.2
CLAUDIA-90	8.1	279.3 x 29.3	81	94	0.6
CLAUDIA-Z2T25	13.6	279.3 x 29.3	asymm.	91	0.4

## VIOLET

[www.ledil.com/violet](http://www.ledil.com/violet)



Compatibility: UV LEDs from Seoul Viosys, Nichia, etc.

name	h	d	typ. FWHM	typ. cd /lm
VIOLET-12X1-RS	8.8	295 x 42	14	8.6
VIOLET-12X1-S	8.8	295 x 42	20	1.4
VIOLET-12X1-W	8.8	295 x 42	60	0.8
VIOLET-12X1-O	<b>NEW</b> 8.8	295 x 42	50 + 10	2.2

## DAHLIA

[www.ledil.com/dahlia](http://www.ledil.com/dahlia)

Compatibility: Up to 3535 size high-power LED packages

name	h	d	typ. FWHM	typ. eff.	typ. cd /lm
DAHLIA-TL110	11	321 x 81	120	94	0.3
DAHLIA-S	<b>NEW</b> 11	321 x 81	20	88	4.8
DAHLIA-W	<b>NEW</b> 11	321 x 81	90	89	0.5
DAHLIA-O	<b>NEW</b> 11	321 x 81	100 + 30	84	1.1

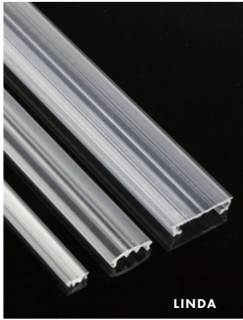
## VANESSA

[www.ledil.com/vanessa](http://www.ledil.com/vanessa)

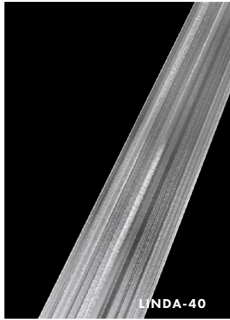
Compatibility: Up to 3535 size LED packages

name	beam type	LEDs	h	d	typ. FWHM	typ. eff.	typ. cd /lm
VANESSA-S	spot	12	8	295 x 16	17	90	7.1
VANESSA-M	medium	12	8	295 x 16	26	89	4.5
VANESSA-O	oval	12	8	295 x 16	42 + 19	82	2.1
VANESSA-B-S	spot	12	8	295 x 16	22	93	4.1
VANESSA-B-W	wide	12	8	295 x 16	37	92	1.7
VANESSA-B-O	oval	12	8	295 x 16	45 + 21	88	1.8

# Linear lenses - Extrusions



LINDA



LINDA-40



LINDA-24



Linear light control in pure and compact form.

LINDA-10

## LINDA

[www.ledil.com/linda](http://www.ledil.com/linda)

### LINDA-40

Compatibility: Single row mid-power up to 24 mm wide Zhaga PCBs

name	beam type	h	d *	typ. FWHM	typ. eff.	typ. cd/lm
LINDA-40-WW	wide	9	40 x 1140	90	88	0,4
LINDA-40-W	wide	9	40 x 1140	60	84	0,6
LINDA-40-O	oval	9	40 x 1140	86 + 40	87	1
LINDA-40-ZT25	asymmetric	9	40 x 1140	asymm.	83	0,6
LINDA-40-Z2T25	double asymmetric	9	40 x 1140	asymm.	84	0,4

\* Custom lengths available upon request valid for LINDA-10, LINDA-24 and LINDA-40

### LINDA-24

Compatibility: Single row mid-power up to 24 mm wide Zhaga PCBs

LINDA-WWW	extra wide	6.3	26 x 1140	110 + 100	90	0.3
LINDA-WW	wide	5.3	26 x 1140	65 + 100	90	0.4
LINDA-WW2	wide	5.3	26 x 1140	97 + 87	89	0.4
LINDA-W60	wide	6.3	26 x 1140	60 + 90	88	0.4
LINDA-O	oval	4.9	26 x 1140	40 + 100	88	0.5
LINDA-ZT25	asymmetric	6.5	26 x 1140	asymm.	89	0.5
LINDA-Z2T25	double asymmetric	5.3	26 x 1140	asymm.	89	0.4
LINDA-UP	wide-area lighting	7.8	26 x 1140	105 + 145	88	0.2
LINDA-UP2	wide-area lighting	11.4	26 x 1140	165 + 130	88	0.3



WWW



WW



WW2



W60



O



ZT25



Z2T25



UP

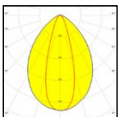


UP2

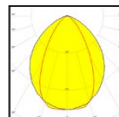
### LINDA-10

Compatibility: 8-10 mm LED strips and 2835, 3030 and 5630 mid power LEDs

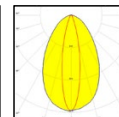
LINDA-10-M	medium	5.1	12.5 x 1140	40 + 85	84	0.7
LINDA-10-W	wide	5.1	12.5 x 1140	55 + 95	87	0.6
LINDA-10-O	oval	7.2	12.5 x 1140	35 + 85	80	0.9
LINDA-10-ZT25	asymmetric	6.1	12.5 x 1140	asymm.	84	0.55
LINDA-10-UP	wide-area lighting	10.3	12.5 x 1140	145 + 100	80	0.25
LINDA-10-F	double asymmetric	5.6	12.5 x 1140	asymm.	80	0.5



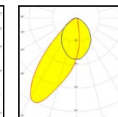
M



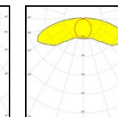
W



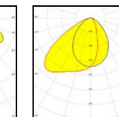
O



ZT25

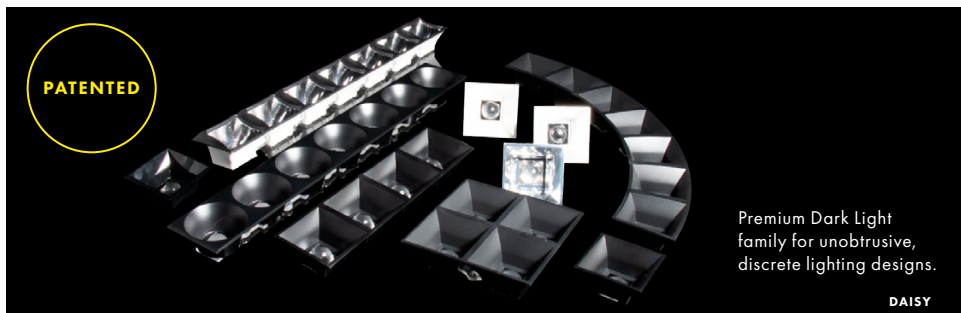


UP



F

# Linear lenses - Dark Light



Premium Dark Light family for unobtrusive, discrete lighting designs.

DAISY

## DAISY

[www.ledil.com/daisy](http://www.ledil.com/daisy)

TESTED FOR  
TUNABLE  
WHITE

### Compatibility:

- Optimised for 2835 and compatible with up to 5630 size mid-power LED packages
- Recommended to be used with two LEDs per one optic which can be up to 5630 in size
- Can be used with single domeless 5050 size LED packages
- Compatible with up to 4 ft long PCBs
- Colours: black, white and metal with gloss or matt finishes. SHD2 for 4X1 and SHD3 for 7X1.
- Lenses: clear or diffused

### DAISY-28X1

name	h	d	typ. FWHM	typ. eff. *	typ. cd/lm
DAISY-28X1-W2	20.3	1140 x 40	50	89	1.5
DAISY-28X1-W	20.3	1140 x 40	50	86	1.2
DAISY-28X1-WW	20.3	1140 x 40	80	85	0.6

### DAISY-7X1/14X1

DAISY-7X1/14X1-M	20.3	280/560 x 40	35	86	1.5
DAISY-7X1/14X1-W2	20.3	280/560 x 40	50	89	1.5
DAISY-7X1/14X1-W	20.3	280/560 x 40	50	86	1.5
DAISY-7X1/14X1-WW	20.3	280/560 x 40	80	85	0.6
DAISY-7X1/14X1-O	20.3	280/560 x 40	30 + 70	75	1.2
DAISY-7X1/14X1-BW	20.3	280/560 x 40	asymm.	72	0.5
DAISY-7X1/14X1-FT-D	20.3	280/560 x 40	asymm.	72	0.5
DAISY-7X1/14X1-ZT25	20.3	280/560 x 40	asymm.	72	1.5
DAISY-7X1-WAS	20.3	280/560 x 40	asymm.	79	1.2

### DAISY-7X1-CRV

DAISY-7X1-CRV-W	<b>NEW</b>	20.3	r: 200 x 40	56	86	1.5
DAISY-7X1-CRV-WW	<b>NEW</b>	20.3	r: 200 x 40	80	85	0.6

### DAISY-1X1

DAISY-1X1-W	<b>NEW</b>	20.3	40 x 40	56	86	1.5
DAISY-1X1-WW	<b>NEW</b>	20.3	40 x 40	80	85	0.6

### DAISY-2X2

DAISY-2X2-W		21	80 x 80	55	86	1.2
DAISY-2X2-WW		21	80 x 80	80	85	0.6

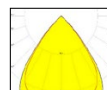
### DAISY-4X1

DAISY-4X1-W		20.3	182 x 40	50	86	1.2
DAISY-4X1-WW		20.3	182 x 40	80	85	0.6

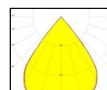
### DAISY-8X1

DAISY-8X1-M		20.3	305 x 38	35	86	1.5
DAISY-8X1-W		20.3	305 x 38	50	86	1.2
DAISY-8X1-WW		20.3	305 x 38	80	85	0.6

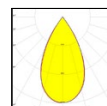
\* typ eff values measured using black shades



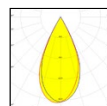
DAISY-7X1/14X1-BW



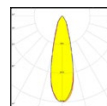
DAISY-XXX-WW



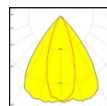
DAISY-XXX-W



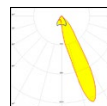
DAISY-7X1/14X1/28X1-W2



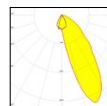
DAISY-7X1/8X1/14X1-M



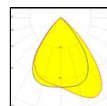
DAISY-7X1/14X1-O



DAISY-7X1/14X1-ZT25



DAISY-7X1-WAS



DAISY-7X1/14X1-FT-D

NEW

NEW

# Linear lenses - Dark Light



DAISY-MINI



PATENTED

Beautiful Bright Light family for comfortable office lighting from any angle.

BRIANNA

## BRIANNA

[www.ledil.com/brianna](http://www.ledil.com/brianna)

TESTED FOR  
TUNABLE  
WHITE

### Compatibility:

- Can be used with or without shade
- Optimised for 2835 2x2 LED clusters
- Shades available as accessories in black and white with matt finish.
- Fastening methods with installation clip, side clip fastening, and top flange fastening

### BRIANNA-7X1

name	h	d	typ. FWHM	typ. eff.	typ. cd/lm
BRIANNA-7X1-W	13.4	280 x 36	60	85	0.8
BRIANNA-7X1-WW <b>COMING</b>	13.4	280 x 36	74	86	0.6

### BRIANNA-14X1

BRIANNA-14X1-W	13.4	560 x 36	60	85	0.8
BRIANNA-14X1-WW <b>COMING</b>	13.4	560 x 36	74	86	0.6

### BRIANNA-28X1

BRIANNA-28X1-W	13.4	1120 x 36	60	85	0.8
BRIANNA-28X1-WW <b>COMING</b>	13.4	1120 x 36	74	86	0.6



BRIANNA-XX-W



BRIANNA-XX-WW

## DAISY-MINI

[www.ledil.com/daisy-mini](http://www.ledil.com/daisy-mini)

TESTED FOR  
TUNABLE  
WHITE

### Compatibility:

- Optimised for 2835 and compatible with up to 5630 size mid-power LED packages
- Colours: black, white and metal with gloss or matt finishes.
- Lenses: clear or diffused

### DAISY-MINI-14X1

name	h	d	typ. FWHM	typ. eff.	typ. cd/lm
DAISY-MINI-M	13.3	280 x 21	30	82	2
DAISY-MINI-W	13.3	280 x 21	50	86	1
DAISY-MINI-WW	13.3	280 x 21	65	84	0.8
DAISY-MINI-WWWW-D	13.3	280 x 21	65	74	0.7
DAISY-MINI-FT-D	13.1	280 x 21	asymm.	70	1

### DAISY-MINI-3X1

DAISY-MINI-3X1-W	13.3	60 x 21	54	84	0.9
DAISY-MINI-3X1-WW	13.3	60 x 21	65	82	0.6



DAISY-MINI-M



DAISY-MINI-W



DAISY-MINI-WW

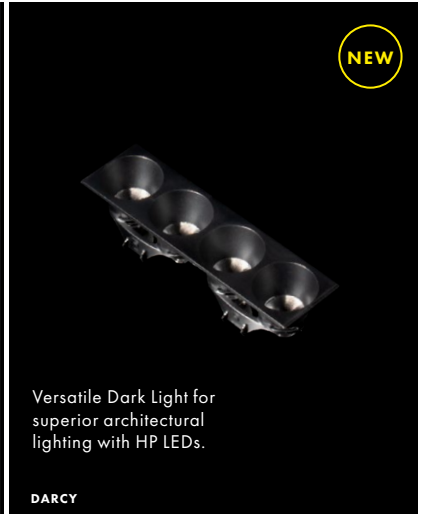


DAISY-MINI-WWWW-D



DAISY-MINI-FT-D

# Linear lenses - Dark Light



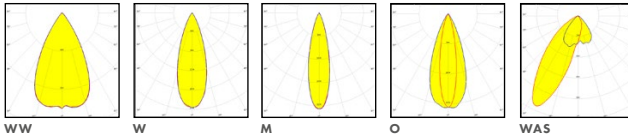
**NEW**

## DALINE

[www.ledil.com/daline](http://www.ledil.com/daline)

Compatibility: Optimised for 1717 CSP LEDs and compatible with up to 2835 MP LEDs.  
Colours: black and white with gloss finish.

name	beam type	h	d	typ. FWHM	typ. eff.	typ. cd/lm
DALINE-10-WW	wide	5.1	12.5 x 280	60	89	1.0
DALINE-10-W	wide	5.1	12.5 x 280	35	80	2.0
DALINE-10-M	medium	5.1	12.5 x 280	26	85	3.3
DALINE-10-O	oval	5.1	12.5 x 280	40 + 20	80	2.5
DALINE-10-WAS	<b>COMING</b> asymm.	5.1	12.5 x 280	asymm.	75	1.0



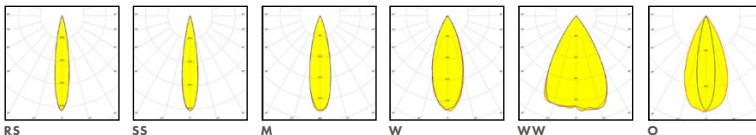
**NEW**

## DARCY

[www.ledil.com/darcy](http://www.ledil.com/darcy)

Compatibility: Optimised for 3535 LED packages and compatible with up to 5050 LED packages.  
Colours: black and white with matt finish.

name	beam type	h	d	typ. FWHM	typ. eff.	typ. cd/lm
DARCY-4X1-RS	real spot	21	94 x 25.8	13	TBA	11
DARCY-4X1-SS	smooth spot	21	94 x 25.8	14	TBA	10
DARCY-4X1-M	medium	21	94 x 25.8	22	TBA	4.7
DARCY-4X1-W	wide	21	94 x 25.8	31	TBA	2.8
DARCY-4X1-WW	wide	21	94 x 25.8	55	TBA	1.0
DARCY-4X1-O	oval	21	94 x 25.8	15 + 45	TBA	2.8



## FLORENTINA

www.ledil.com/florentina

Shades available as accessories in black and white with gloss finish.

### FLORENTINA-12X1

Compatibility: LEDiL standard TINA/TINA2 lenses (up to 3535 LED size packages)

name	beam type	h	d	typ. FWHM	typ. eff.	typ. cd/lm
FLORENTINA-HLD-RS	real spot	25.1	29 x 287	11	84	16.7
FLORENTINA-HLD-D	diffused spot	25.1	29 x 287	13	84	9.6
FLORENTINA-HLD-SS	smooth spot	25.1	29 x 287	21	85	5.9
FLORENTINA-HLD-M	medium	25.1	29 x 287	29	81	3.3
FLORENTINA-HLD-W	wide	25.1	29 x 287	42	84	1.8
FLORENTINA-HLD-WW	extra wide	25.1	29 x 287	50	78	1.1
FLORENTINA-HLD-BW	batwing	25.1	29 x 287	60	81	1.0
FLORENTINA-HLD-O	oval	25.1	29 x 287	35 + 12	83	5.1



FLORENTINA-12X1

### FLORENTINA-1

Compatibility: LEDiL standard ROSE lenses up to 5050 size and ROSE-MRK lenses up to 7070 size LED packages

FLORENTINA-1-RS-60	real spot	31.9	40 x 40	16	80	9.3
FLORENTINA-1-SS-60	smooth spot	31.9	40 x 40	18	83	7
FLORENTINA-1-D-60	diffused spot	31.9	40 x 40	21	77	5.1
FLORENTINA-1-M-60	medium	31.9	40 x 40	31	78	2.6
FLORENTINA-1-W-60	wide	31.9	40 x 40	44	71	1.3
FLORENTINA-1-O-60	oval	31.9	40 x 40	44 + 20	72	2.8
FLORENTINA-1-MRK-S-60	spot	31.9	40 x 40	26	68	2.3
FLORENTINA-1-MRK-M-60	medium	31.9	40 x 40	40	75	1.4
FLORENTINA-1-MRK-W-60	wide	31.9	40 x 40	57	70	0.7
FLORENTINA-1-MRK-BW	batwing	31.9	40 x 40	60	63	0.7



FLORENTINA-4X1

### FLORENTINA-2X2

Compatibility: LEDiL standard ROSE lenses up to 5050 size and ROSE-MRK lenses up to 7070 size LED packages

FLORENTINA-2X2-RS	real spot	28.5	95.6 x 95.6	16	78	7.4
FLORENTINA-2X2-D	diffused spot	28.5	95.6 x 95.6	19	77	5.5
FLORENTINA-2X2-SS	smooth spot	28.5	95.6 x 95.6	20	79	5.4
FLORENTINA-2X2-M	medium	28.5	95.6 x 95.6	30	75	2.4
FLORENTINA-2X2-W	wide	28.5	95.6 x 95.6	49	70	1.0
FLORENTINA-2X2-O	oval	28.5	95.6 x 95.6	44 + 18	70	2.5
FLORENTINA-2X2-MRK-S	spot	28.5	95.6 x 95.6	28	68	2.1
FLORENTINA-2X2-MRK-M	medium	28.5	95.6 x 95.6	42	74	1.4
FLORENTINA-2X2-MRK-W	wide	28.5	95.6 x 95.6	53	94	0.7
FLORENTINA-2X2-MRK-BW	batwing	28.5	95.6 x 95.6	64	63	0.7

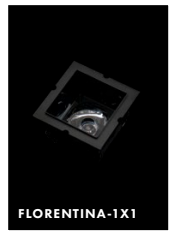


FLORENTINA-2X2

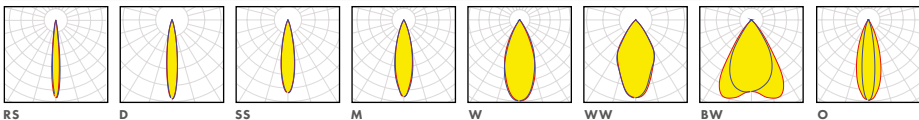
### FLORENTINA-4X1

Compatibility: LEDiL standard ROSE lenses up to 5050 size and ROSE-MRK lenses up to 7070 size LED packages

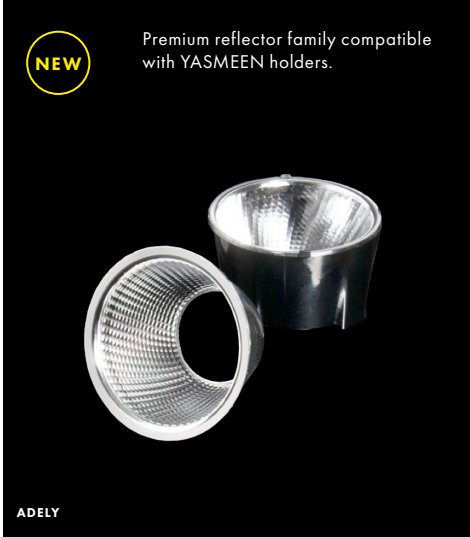
FLORENTINA-4X1-RS	real spot	28.5	175.6 x 55.6	10	82	19.0
FLORENTINA-4X1-SS	smooth spot	28.5	175.6 x 55.6	16	81	8.5
FLORENTINA-4X1-D	diffused spot	28.5	175.6 x 55.6	18	77	6.6
FLORENTINA-4X1-M	medium	28.5	175.6 x 55.6	30	75	2.4
FLORENTINA-4X1-W	wide	28.5	175.6 x 55.6	36	69	1.5
FLORENTINA-4X1-O	oval	28.5	175.6 x 55.6	44 + 15	74	3.0
FLORENTINA-4X1-MRK-S	spot	28.5	175.6 x 55.6	28	77	2.1
FLORENTINA-4X1-MRK-M	medium	28.5	175.6 x 55.6	39	75	1.5
FLORENTINA-4X1-MRK-W	wide	28.5	175.6 x 55.6	49	73	0.8
FLORENTINA-4X1-MRK-BW	batwing	28.5	175.6 x 55.6	64	63	0.7



FLORENTINA-1X1



# Reflectors



**NEW**

Premium reflector family compatible with YASMEEN holders.

ADELY



ADELIA

**NEW**

## ADELY

[www.ledil.com/adely](http://www.ledil.com/adely)



Ø50/70 mm premium aluminum reflector family combining visual perfection and flexible connectivity with YASMEEN holders

Compatibility:

- Ø50 mm: optimized for 10 mm LES COBs
- Ø70 mm: optimized for 14.5 mm LES COBs
- LEDiL HEKLA (with YASMEEN-50/ADELY-70 holder C)
- 35 mm B+W and BJB connectors (with YASMEEN-50/ADELY-70 holder B)

name	beam	h	d	typ. FWHM	typ. eff.	typ.cd/lm
ADELY-50/70-S	spot	27 / 39	50 / 70	15	88	5
ADELY-50/70-M	medium	27 / 39	50 / 70	24	89	3
ADELY-50/70-W	wide	27 / 39	50 / 70	36	90	2
ADELY-50/70-WW	extra wide	27 / 39	50 / 70	55	90	1

## ADELIA

[www.ledil.com/adelia](http://www.ledil.com/adelia)



Ø50/70/75/110 mm premium aluminum reflector family ideal for visual perfection

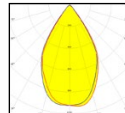
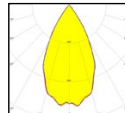
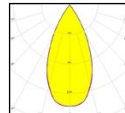
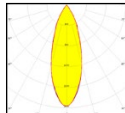
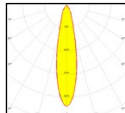
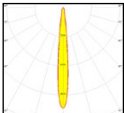
Compatibility:

- Ø50 mm: optimized for 10 mm LES COBs
- Ø70 mm and Ø75 mm: optimized for 14.5 mm LES COBs
- Ø110 mm: optimized for 22 mm LES COBs

Easy mounting using ADELIA adapters

- LEDiL HEKLA (with adapter C), page 43
- B+W and BJB connectors (with adapter B)
- ADELIA-50, -70 and -75: 35 mm B+W and BJB connectors
- ADELIA-110: 50 mm B+W and BJB connectors

name	beam	h	d	typ. FWHM	typ. eff.	typ.cd/lm
ADELIA-50/70/75/110-S	spot	18 / 43 / 43 / 58	50 / 70 / 75 / 110	15	90	5
ADELIA-50/70/75/110-M	medium	18 / 43 / 43 / 58	50 / 70 / 75 / 110	24	90	3.5
ADELIA-50/70/75/110-W	wide	18 / 43 / 43 / 58	50 / 70 / 75 / 110	36	90	2
ADELIA-70-W2	wide	43	70	50	89	1.4
ADELIA-50/70/75/110-WW	extra wide	18 / 43 / 43 / 58	50 / 70 / 75 / 110	55	90	1
ADELIA-50/70/75/110-WW2	extra wide	18 / 43 / 43 / 58	50 / 70 / 75 / 110	65	87	0.9



ADELIA-50/70/75/110-S

ADELIA-50/70/75/110-M

ADELIA-50/70/75/110-W

ADELIA-70-W2

ADELIA-50/70/75/110-WW

ADELIA-50/70/75/110-WW2





ELLA



ALISE

## ELLA

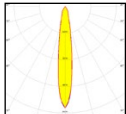
[www.ledil.com/ella](http://www.ledil.com/ella)

Compatibility: Optimized for 4–8 mm LES size COBs

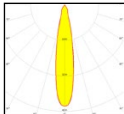
When used with OLGA holder compatible with up to 7070 size LED packages

name	d	h	typ. FWHM	typ. eff.	typ. cd/lm
ELLA-30-S	30 / 32*	17.2 / 20*	15°	91	8.5
ELLA-30-M	30 / 32*	17.2 / 20*	28°	90	4.5
ELLA-30-W	30 / 32*	17.2 / 20*	38°	88	2.4
ELLA-30-WW	30 / 32*	17.2 / 20*	55°	90	1.3

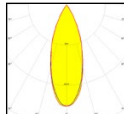
\* with holder



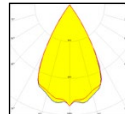
ELLA-30-S



ELLA-30-M



ELLA-30-W



ELLA-30-WW

## ALISE-50, -70, -110

[www.ledil.com/alise](http://www.ledil.com/alise)



Ø50/70/110 mm aluminum reflector family for down- and track lights

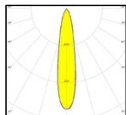
Compatibility:

Optimized:

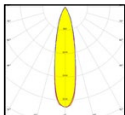
- Ø50 mm: LES 10 mm
- Ø70 mm: LES 14.5 mm
- Ø110 mm: LES 22 mm

Optimized for Zhaga connectors e.g. Lumawise LED holders Z35, Z45, Z50

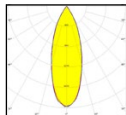
name	beam	h	d	typ. FWHM	typ. eff.	typ. cd/lm
ALISE-50/70/110-S	spot	25 / 42 / 65	50 / 70 / 110	15	92	5.3
ALISE-50/70/110-M	medium	25 / 42 / 65	50 / 70 / 110	24	92	4.1
ALISE-50/70/110-W	wide	25 / 42 / 65	50 / 70 / 110	36	92	2.3
ALISE-50/70/110-WW	extra wide	25 / 42 / 65	50 / 70 / 110	60	91	1.0



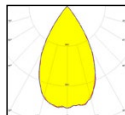
S



M



W



WW

# Reflectors

LEDiL System Reflectors: One luminaire to qualify them all. Change only the reflector to use same fixture for multiple purposes. Wide LED and fastening compatibility with additional sockets for twist and lock or press fit installations. Enhance with the LEDiL's patented RZ-technology for smoother uniform light patterns.



## BROOKE-G2

[www.ledil.com/brooke-g2](http://www.ledil.com/brooke-g2)



HEKLA

Compatible with LEDiL HEKLA, page 43

Compatibility: COBs with LES size up to 19 mm

name	h	d	typ. FWHM	typ. eff.	typ. cd/lm
BROOKE-G2-S	19.7	45	18	92	4.3
BROOKE-G2-M	19.7	45	28	92	2.0
BROOKE-G2-W	19.7	45	47	92	1.0

### additional accessories

BARBARA-RZ-LENS color mixing sublens

### TESTED FOR

### TUNABLE

### WHITE

Additional BARBARA-RZ-LENS  
colour mixing sublens needed  
for tunable white lighting



BROOKE-G2

## MIRELLA

www.ledil.com/mirella

Ø50 mm LEDiL System Reflectors compatible with various accessories, sockets and solderless connectors

### MIRELLA-G2

Compatible with LEDiL HEKLA, page 43

Compatibility: COBs with LES size up to 14 mm



name	h	d	typ. FWHM	typ. eff.	typ. cd/lm
MIRELLA-G2-S	24.8	49.9	15	90	6.6
MIRELLA-G2-M	24.8	49.9	20	90	3.4
MIRELLA-G2-W	24.8	49.9	31	91	1.9
MIRELLA-G2-WW	24.8	49.9	50	85	1.3

#### additional accessories

MIRELLA-CL	clear lens
MIRELLA-DL	diffused lens
MIRELLA-RZL	colour mixing lens

**TESTED FOR** Additional MIRELLA-RZL colour  
**TUNABLE** mixing lens needed for tunable white  
**WHITE** lighting

### MIRELLA-PF

Press-fit fastening with LEDiL sockets

Compatibility:

– COBs with LES size up to 14 mm

– LEDiL PF-interface baseparts, page 42

– B+W connectors with LEDiL PF-interface baseparts, page 42

name	h	d	typ. FWHM	typ. eff.	typ. cd/lm
MIRELLA-50-S-PF	24	49.9	17	88	5.4
MIRELLA-50-M-PF	24	49.9	32	88	1.9
MIRELLA-50-W-PF	24	49.9	43	87	1.3
MIRELLA-50-XW-PF	24	49.9	78	92	0.6

#### additional accessories

MIRELLA-CL	clear lens
MIRELLA-DL	diffused lens
MIRELLA-RZL	color mixing lens



MIRELLA-G2



MIRELLA-PF

# Reflectors

## BARBARA

[www.ledil.com/barbara](http://www.ledil.com/barbara)

Ø70 mm LEDiL System Reflectors compatible with various accessories, sockets and solderless connectors.

### BARBARA-G2

Compatible with LEDiL HEKLA, page 43

Compatibility: COBs with LES size up to 18 mm



HEKLA

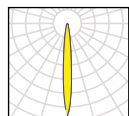
name	h	d	typ. FWHM	typ. eff.	typ. cd/lm
BARBARA-G2-S	41.9	70	13	91	9.8
BARBARA-G2-M	41.9	70	25	92	3.6
BARBARA-G2-W	41.9	70	40	90	1.7
BARBARA-G2-WW	41.9	70	60	92	1.1

#### additional accessories

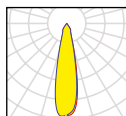
BARBARA-RZ-LENS color mixing sublens

#### TESTED FOR

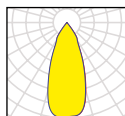
**TUNABLE WHITE** Additional BARBARA-RZ-LENS colour mixing sublens needed for tunable white lighting



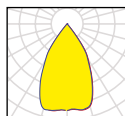
G2-S



G2-M



G2-W



G2-WW

### BARBARA-PF

Press-fit fastening for LEDiL sockets

Compatibility:

- COBs with LES size up to 19 mm
- LEDiL PF-interface baseparts, page 42
- B+W connectors with LEDiL PF-interface baseparts, page 42

name	h	d	typ. FWHM	typ. eff.	typ. cd/lm
BARBARA-S-PF	41.7	70	21	88	3.6
BARBARA-W-PF	41.7	70	28	85	2.5
BARBARA-WW-PF	41.7	70	64	84	1.2
BARBARA-XW-PF	41.7	70	74	90	0.7

#### additional accessories

see [www.ledil.com](http://www.ledil.com)



BARBARA-G2



BARBARA-PF

## LENA / LENINA

Ø111 mm and Ø74 mm LEDiL System Reflectors compatible with various sublenses and sockets.

### LENA

[www.ledil.com/lena](http://www.ledil.com/lena)

#### Compatibility:

- COBs with LES size up to 35 mm
- LEDiL LENA/LENINA baseparts, page 42
- B+W connectors with LEDiL LENA/LENINA interface

name	beam type	d	h	typ. FWHM	typ. eff.	typ. cd/lm
LENA-S	spot	111	86	11	85	7.6
LENA-SS	smooth spot	111	86	18	82	5.0
LENA-M	medium	111	86	22	83	2.5
LENA-W	wide	111	86	46	82	1.3
LENA-WAS	WAS	111	37	asymm.	82	1.1

#### additional accessories

LENA-LENS	diffuser lens
LENA-CLEAR-LENS	clear lens

### LENINA

[www.ledil.com/lenina](http://www.ledil.com/lenina)

#### Compatibility:

- COBs with LES size up to 35 mm
- Available with lacquer or HMDS aluminium coating
- Easy twist and lock latching mechanism
- LEDiL LENA/LENINA baseparts, page 42
- B+W connectors with LEDiL LENA/LENINA interface

name	beam type	d	h	typ. FWHM	typ. eff.	typ. cd/lm
LENINA-S	spot	74	46	19	88	4.5
LENINA-M	medium	74	46	31	87	2.1
LENINA-W	wide	74	46	53	87	1.1
LENINA-XW	extra wide	74	46	73	89	0.6
LENINA-S-HMDS	spot	74	40	22	93	3.7
LENINA-M-HMDS	medium	74	40	37	93	1.9
LENINA-W-HMDS	wide	74	40	65	91	0.9

#### additional accessories

LENINA-DL	diffuser lens
LENINA-CL	clear lens



# Reflectors

## ANGELA / ANGELINA / ANGELETTE

Ø120 mm, Ø82 mm and Ø110 mm reflector families part of the LEDiL's System Reflectors.  
ANGELA/ANGELINA/ANGELETTE-B versions available with BJB compatible interface.

**TESTED FOR** Additional ANGE-RZ colour mixing sublens needed for tunable white lighting

### ANGELA

[www.ledil.com/angela](http://www.ledil.com/angela)

Compatibility:

- COBs with LES size up to 32 mm
- LEDiL A-interface baseparts, page 42
- B+W connectors with LEDiL A-interface
- 50 mm B+W and BJB connectors (B variants)

name	beam type	d	h	typ. FWHM	typ. eff.	typ. cd/lm
ANGELA-S	spot	119.5	74.27	10	89	3.2
ANGELA-M	medium	119.5	74.27	32	89	2.5
ANGELA-W	wide	119.5	74.27	46	89	1.4
ANGELA-XW	wide	119.5	74.27	72	93	0.6
<b>additional accessories</b>						
ANGE-RZ	color mixing sublens					

### ANGELINA

[www.ledil.com/angelina](http://www.ledil.com/angelina)

Compatibility:

- COBs with LES size up to 32 mm
- LEDiL A-interface baseparts, page 42
- B+W connectors with LEDiL A-interface
- 50 mm B+W and BJB connectors (B variants)

name	beam type	d	h	typ. FWHM	typ. eff.	typ. cd/lm
ANGELINA-S	spot	82	31	20	90	1.2
ANGELINA-M	medium	82	31	32	92	1.6
ANGELINA-W	wide	82	31	47	92	1.1
ANGELINA-XW	extra wide	82	31	91	93	0.5
<b>additional accessories</b>						
ANGE-RZ	color mixing sublens					

### ANGELETTE

[www.ledil.com/angelette](http://www.ledil.com/angelette)

Compatibility:

- COBs with LES size up to 32 mm
- LEDiL A-interface baseparts, page 42
- B+W connectors with LEDiL A-interface
- 50 mm B+W and BJB connectors (B variants)

name	beam type	d	h	typ. FWHM	typ. eff.	typ. cd/lm
ANGELETTE-S	spot	110	57.3	10	90	5.3
ANGELETTE-M2	medium	110	57.3	35	88	1.4
ANGELETTE-M	medium	110	57.3	50	89	1.2
ANGELETTE-WW	extra wide	110	57.3	70	90	0.8
ANGELETTE-WAS	asymm	97x 83	84	asymm.	92	1.4
<b>additional accessories</b>						
ANGE-RZ	color mixing sublens					
ANGELETTE-LENS	clear lens for symmetrical ANGELETTE reflectors					
ANGELETTE-DL	diffusing lens for symmetrical ANGELETTE reflectors					

name	beam type	d	h	typ. FWHM	typ. eff.	typ. cd/lm
ANGELETTE-S-PLAIN	spot	110	57.3	10	89	8.1
ANGELETTE-M-PLAIN	medium	110	57.3	50	89	1.2
ANGELETTE-WW-PLAIN	extra wide	110	57.3	63	89	1.1
<b>additional accessories</b>						
ANGE-RZ	color mixing sublens					



ANGELA / ANGELINA



ANGELETTE-PLAIN

## MINNIE

[www.ledil.com/minnie](http://www.ledil.com/minnie)

Available with or without holder. Diameter 35 mm (32.4 mm without holder), typical height ~15 mm.

Compatibility: Up to 7070 size LED packages

name	beam type	h	typ. FWHM	typ. eff.	typ. cd/lm
MINNIE-M	medium	15	24	90	2.6
MINNIE-W	wide	15	33	89	2.0
MINNIE-WWW	extra wide	15	69	91	0.9
MINNIE-XW	extrawide	15	90	92	0.5
MINNIE-LT-M	medium	15	21	92	2.0
MINNIE-LT-W	wide	15	29	92	2.0
MINNIE-LT-WWW	extra wide	15	62	93	0.87



## BOOM

[www.ledil.com/boom](http://www.ledil.com/boom)

Compatibility: Up to 7070 size LED packages

name	h	d	typ. FWHM	typ. cd/lm
BOOM-S	14	22.2	18	3.6
BOOM-M	14	22.2	32	1.9
BOOM-W	14	22.2	55	1.1
BOOM-XW	14	22.2	70	0.67



## BRIDGET

[www.ledil.com/bridget](http://www.ledil.com/bridget)

Compatibility: Up to 7070 size LED packages and COB's with LES size up to 10 mm

name	h	d	typ. FWHM	typ. eff.	typ. cd/lm
BRIDGET-S-UNI	12.8	22.6	44	85	1.0
BRIDGET-M-UNI	12.8	22.6	52	84	1.1
BRIDGET-W-UNI	12.8	22.6	61	87	1.0

## RITA

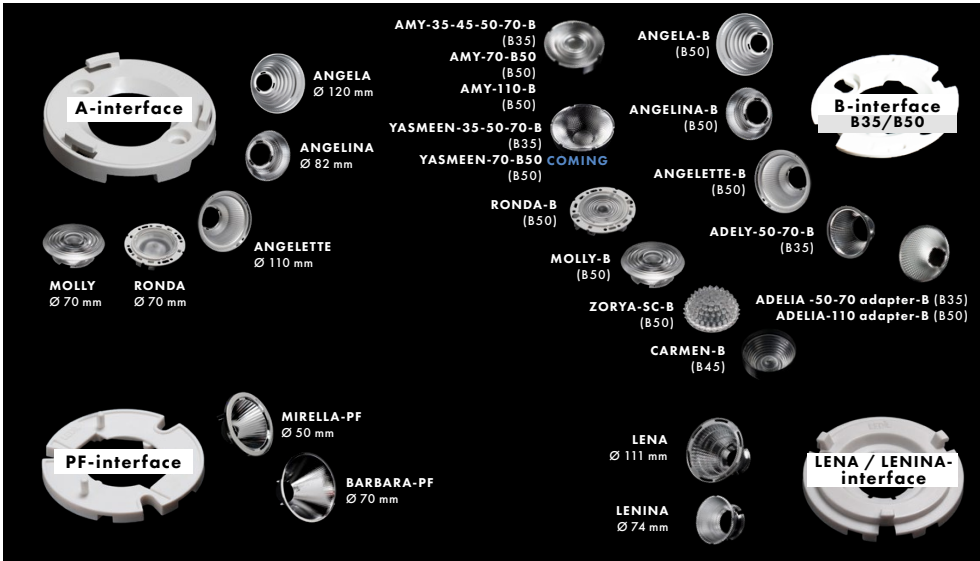
[www.ledil.com/rita](http://www.ledil.com/rita)

Compatibility: Up to 5050 size LED packages

name	beam type	h	d	typ. eff.	typ. cd/lm
RITA-A	asymm	17	36 x 28.4	87	0.6
RITA-WAS	asymm	17	31.9 x 28.4	85	0.63



# Baseparts



## A-interface

C13584\_CLAMP-VERO29 \*  
 C16140\_CLAMP-VERO29 (improved)  
 C13658\_CLAMP-VERO13-18  
 C16402\_CLAMP-VEROSE-13-18 \*  
 C14036\_CLAMP\_CXA25-30  
 C14123\_CLAMP-CXA15-18  
 C16685\_CLAMP-PRV-A  
 C16791\_CLAMP-Z45-A  
 C16491\_XTM-ADAPTER-50-A

## B-interface

C15743\_XTM-ADAPTER-50-B \*\*  
 SOCKET-B-35-C  
 SOCKET-B-35-I  
 SOCKET-B-35-L  
 SOCKET-B-35-M  
 SOCKET-B-35-N

## LENA/LENINA-interface

C14547\_LENA-ADAPTER-B \*\*\*  
 C13186\_LENA-STD-BASE-CXA15  
 C14146\_LENA-STD-BASE-CXA18  
 C13324\_LENA-STD-BASE-CXA25  
 C13868\_LENA-STD-BASE-VERO13-18 \*  
 C15570\_LENA-STD-BASE2-VERO13-18  
 C13867\_LENA-STD-BASE-VERO29 \*  
 C15083\_LENA-STD-BASE-VERO29  
 C11981\_LENA-STD-BASE-COB-L110  
 C12292\_LENA-STD-BASE-MEZ  
 C12691\_LENA-STD-BASE-CLL030  
 C12692\_LENA-STD-BASE-CLL040

\* Enables compatibility with Bender+Wirth solderless connectors

\*\* Compatible with ANGELA-B, ANGELINA-B, ANGELETTE-B, ZORYA-SC-B, BARBARA-G2, MIRELLA-G2, BROOKE-G2, CARMEN-50-C

\*\*\* Enables compatibility with BJB solderless connector 50 mm, Tridonic SLE

## PF-interface

C13083\_PF-SOCKET  
 C13708\_PF-SOCKET-VERO10  
 C13709\_PF-SOCKET-VERO13-18 \*  
 C13761\_PF-SOCKET-CXA15  
 C14037\_PF-NSX-SOCKET  
 C14115\_PF-SOCKET-CXA15-18  
 C14636\_XTM-PF-ADAPTER

## A-interface (3<sup>rd</sup> party)

TE: Z50 STD PROFILE + TE OPTIC CLIP Z50 TYPE1  
 Osram PrevaLED Core Z 50mm + TE OPTIC CLIP Z50 TYPE1  
 Osram PrevaLED Core AC + TE OPTIC CLIP Z50 TYPE1  
 Philips/Signify Fortimo SLM holder + TE OPTIC CLIP Z50 TYPE1  
 Bender+Wirth COB HOLDER HYBRID 630 - 3Hook

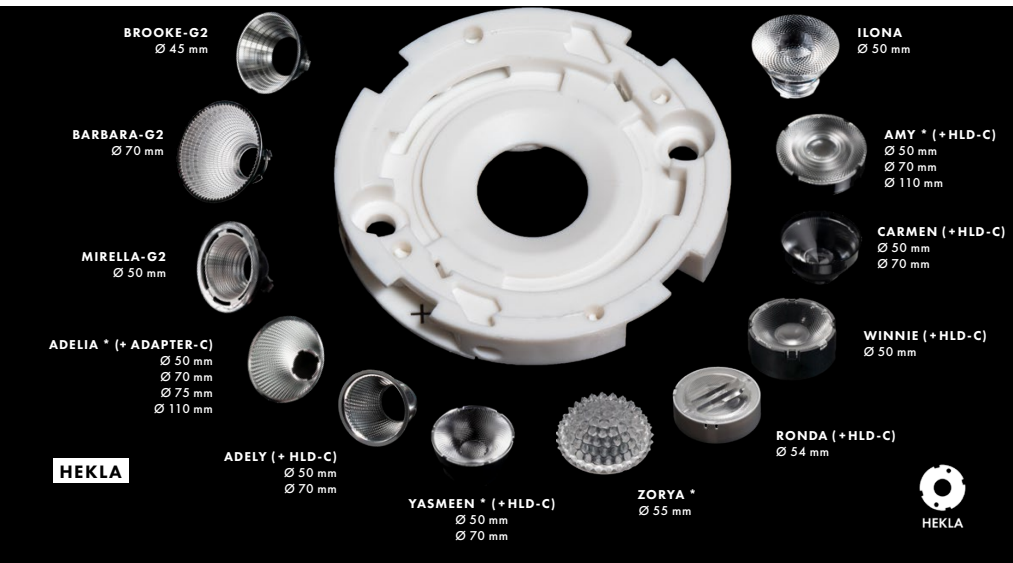
## B-interface (3<sup>rd</sup> party)

**B35**  
 B+W 6xxx Bayonet35L  
 BJB 47.360.1xxx  
**B50**  
 B+W 4xx Typ L5  
 B+W 6xxx Bayonet50  
 BJB 47.319.2xxx  
 BJB 47.319.6xxx

## LENA/LENINA-interface (3<sup>rd</sup> party)

Bender+Wirth COB HOLDER HYBRID 630 - Lena





## HEKLA connectors, sockets and accessories

Compatibility: One interface for a variety of LEDiL optics and COBs

Usability: Easy to use twist and lock mechanism for optics assembly and replacement with pre-fix for COBs

Durability: Long lasting materials that can handle high temperatures without losing grip

Rated voltage: 150 V

Rated current: 3 A

connectors	LED package
HEKLA-C-G2	13.5 x 13.5 mm
HEKLA-D-G2	15.85 x 15.85 mm
HEKLA-H-G2	19 x 16 mm
HEKLA-I-G2	19 x 19 mm
HEKLA-J-G2	13.35 x 13.35 mm
sockets	LED package
HEKLA-SOCKET-A	12.5 x 12.5 mm
HEKLA-SOCKET-B	17.85 x 17.85 mm
HEKLA-SOCKET-C	13.5 x 13.5 mm
HEKLA-SOCKET-D	15.85 x 15.85 mm
HEKLA-SOCKET-E	15.8 x 15.8 mm
HEKLA-SOCKET-F	Vero 10
HEKLA-SOCKET-G	15 x 12 mm
HEKLA-SOCKET-H	19 x 16 mm
HEKLA-SOCKET-I	19 x 19 mm
HEKLA-SOCKET-J	13.35 x 13.35 mm
HEKLA-SOCKET-K	Bender+Wirth 4xx/Typ-L8
HEKLA-SOCKET-VERO18	Vero 13, 18 and B&W 4xx /Typ-L1
XTM-ADAPTER-50-B & -C	
accessories	
HEKLA-RZ-LENS	Colour mixing sublens for tunable white lighting

## HEKLA 3rd party connectors

Bender+Wirth COB HOLDER HYBRID 630 - Hekla

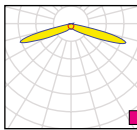
\* Compatible with HEKLA-RZ colour mixing sublens

# Street & Area lighting

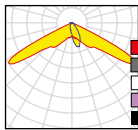


## MODULAR SOLUTIONS

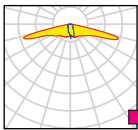
 STRADA-5Q	 SITARA	
 STRADA-2X2	 SITARA-2X2	 STRADA-2X2MXS
 STRADA-2X2CSP	 STRADA-IP-2X6	 STRADA-IP-8MX
 STRADA-2X2-5050	 STRADA-IP-24	 STRADA-IP-16MX
 STRADA-2X2S	 STRADA-2X2MX	 STRADELLA
		 STRADELLA-8
		 STRADELLA-8-CSP
		 STRADELLA-IP-16
		 STRADELLA-IP-28
		 STRADELLA-IP-64



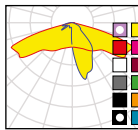
T1 IESNA Type I (medium)



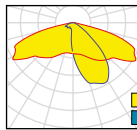
T1-A IESNA Type I (short)



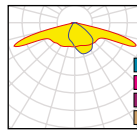
T1-M IESNA Type I (medium)  
beam for European  
P-class standard



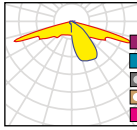
T2 IESNA Type II (medium)



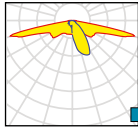
T2-B IESNA Type II,  
minimized house side  
backlight



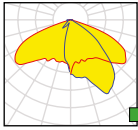
T2-C IESNA Type II, added  
house side backlight



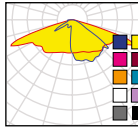
T2-M IESNA Type II (medium)



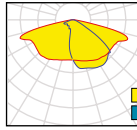
T2-L IESNA Type II (long)



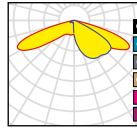
T2-S IESNA Type II (short)



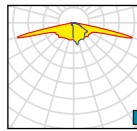
T3 IESNA Type III (medium)



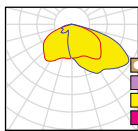
T3B / T3-B IESNA Type III  
(medium), minimized  
backlight



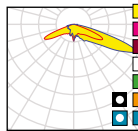
T3-M IESNA Type III (medium)



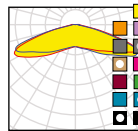
T3-L IESNA Type III (long)



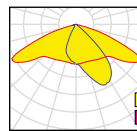
T4 IESNA Type IV



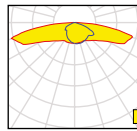
T4-B IESNA Type IV,  
forward throw beam



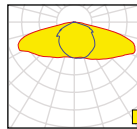
VSM IESNA Type V (square)



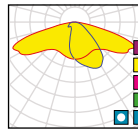
A-T Short IESNA Type II



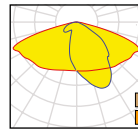
ANZ-P  
Pedestrian lighting  
in Australia &  
New Zealand



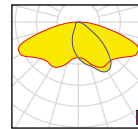
ANZ-V  
Vehicular road lighting  
in Australia &  
New Zealand



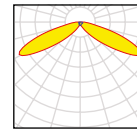
DWC / T-DWC  
Universal road lighting  
(Typ. IESNA Type III  
Medium)



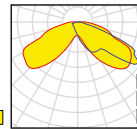
DWC2  
Universal road lighting  
(Typ. IESNA Type III  
Medium)



DNW  
Soft wide beam with  
good illuminance  
uniformity

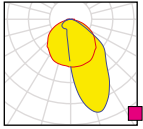


DW / T-DW  
Soft wide beam with  
good illuminance  
uniformity

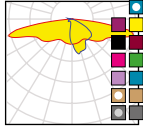


FW  
Wide light distribution,  
residential streets,  
staggered pole setup

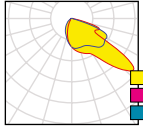
# Street & Area Lighting



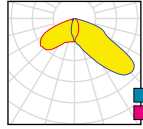
**NHS**  
Narrow beam,  
minimal house side light



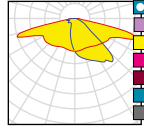
**SCL**  
Type II/III (long),  
ideal for pedestrian paths  
and residential roads



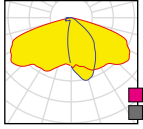
**PX**  
Double asymm.,  
pedestrian crossings, right  
side traffic



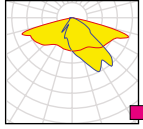
**PXL**  
Double asymm.,  
pedestrian crossings,  
left side traffic



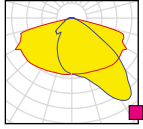
**ME**  
Excellent longitudinal  
luminance uniformity  
fulfilling EN13201  
M-class requirements



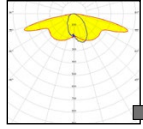
**ME-N**  
Designed for high poles,  
fulfilling EN13201  
M-class requirements



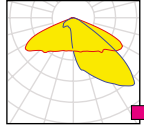
**ME-WIDE1**  
Fulfilling EN13201 M-class  
requirements, added  
house side backlight



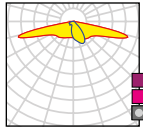
**ME-WIDE2**  
For staggered pole  
setups fulfilling EN13201  
M-class requirements



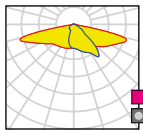
**ME3**  
For ultra-long pole distances with  
excellent longitudinal luminance  
uniformity



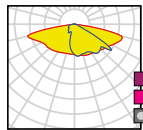
**MEW**  
Extremely low glare  
fulfilling EN13201 M-class  
requirements for wet road  
surfaces in North Europe



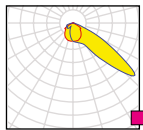
**LN1**  
For EN13201 M-class  
requirements with high poles  
or where road width ≤ the  
pole height



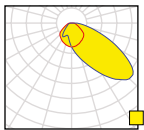
**LM1**  
For EN13201 M-class  
requirements where road  
width ≥ the pole height



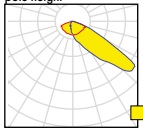
**LW1**  
For EN13201 M-class  
requirements where road  
width > the pole height



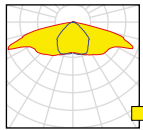
**FN**  
Narrow forward throw  
beam for area lighting



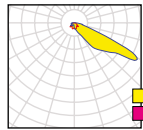
**FT**  
Forward throw beam for  
area lighting



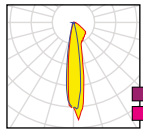
**FS**  
Forward throw beam for  
area lighting



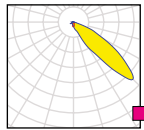
**FS2**  
For symmetrical tunnel  
lighting and parking  
garages, ideal for  
catenary street lighting



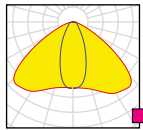
**FS3**  
Forward throw beam  
optimized for European  
tunnels, extremely efficient  
lighting with counter-beam  
method



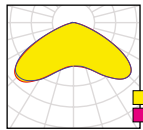
**FR**  
Asymmetric spot light  
beam for floodlighting  
railway tracks according  
to Russian normative



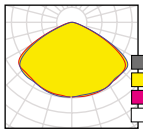
**TF**  
Narrow forward throw  
beam optimized for  
European tunnels



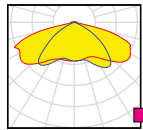
**B2**  
For area lighting and  
applications demanding a  
wide oval beam pattern



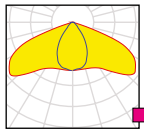
**C**  
For area and street  
lighting such as parks and  
pedestrian walkways



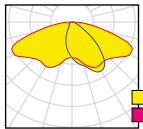
**CY**  
For canopy lighting with  
batwing light distribution,  
suitable for symmetrical  
tunnel lighting



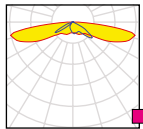
**CAT**  
Catenary street light  
beam optimized for  
EN13201 M-classes



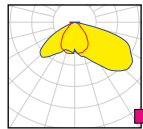
**CAT-B**  
Narrow catenary street  
light beam optimized for  
EN13201 M-classes and  
tilted poles



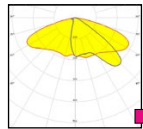
**DN / T-DN**  
For area lighting with  
shorter illumination  
distances



**XW**  
Wide beam



**DB**  
For floodlighting  
the area between  
the railway tracks  
according to DB  
requirements.



**J1**  
Low glare street  
lighting optic  
for European  
and Japanese  
requirements.

# Street & Area lighting



## STRADA

[www.ledil.com/strada](http://www.ledil.com/strada)

### STRADA single lenses

**PATENTED**

Compatibility: Up to 3535 sized LED packages

name	dimensions	height	typ. eff.	typ. FWHM
STRADA-A	19.6 x 15.5	10.8	92	80 x 146
STRADA-A2	19.6 x 15.5	10.6	92	72 x 141
STRADA-B	19.6 x 15.5	6	93	105 x 44
STRADA-B2	19.6 x 15.5	5.3	92	111 x 47
STRADA-C	19.6 x 15.5	5.3	92	125
STRADA-C2 (NP & CLIP versions)	19.6 x 15.5	6.4	92	120
STRADA-DW	19.6 x 15.5	9.6	92	89 x 142
STRADA-T-DW	19.6 x 15.5	10.8	93	asymm.
STRADA-T-DW-EP	19.6 x 15.5	10.7	92	asymm.
STRADA-DN	19.6 x 15.5	5.9	92	107 x 58
STRADA-T-DN	19.6 x 15.5	8.9	92	asymm.
STRADA-T-DN-EP	19.6 x 15.5	8.8	91	asymm.
STRADA-FT	19.6 x 15.5	8.3	91	asymm.
STRADA-FW	19.6 x 15.5	10.9	92	asymm.
STRADA-K	19.6 x 15.5	8.7	96	asymm.
STRADA-S	19.6 x 15.5	6.9	93	149 x 159
STRADA-S-14	19.6 x 15.5	6.9	93	149 x 159
STRADA-ME	19.6 x 15.5	5.7	92	asymm.

### STRADA-SQ

**PATENTED**

Compatibility: Up to 7070 sized LED packages

name	dimensions	height	typ. eff.	typ. FWHM
STRADA-SQ-ANZ-P	25 x 25	8.1	91	asymm.
STRADA-SQ-ANZ-V	25 x 25	8.1	93	asymm.
STRADA-SQ-CY	25 x 25	10.1	94	120 + 115
STRADA-SQ-T2	25 x 25	8.5	90	asymm.
STRADA-SQ-T2-B	25 x 25	10.4	92	asymm.
STRADA-SQ-T3	25 x 25	8.5	90	asymm.
STRADA-SQ-T3B	25 x 25	8.4	93	asymm.
STRADA-SQ-T4 (+ NP version)	25 x 25	9.4	93	asymm.
STRADA-SQ-T4-B	25 x 25	11.9	90	asymm.
STRADA-SQ-ME (+ NP version)	25 x 25	8.8	92	asymm.
STRADA-SQ-FS (+ NP version)	25 x 25	12.3	93	asymm.
STRADA-SQ-FS2	25 x 25	8.2	90	zasyymm.
STRADA-SQ-FS3	25 x 25	16.2	91	asymm.
STRADA-SQ-A-T	25 x 25	9.1	93	asymm.
STRADA-SQ-T-DN	25 x 25	8.5	90	asymm.
STRADA-SQ-T-DW*	25 x 25	11.4	91	asymm.
STRADA-SQ-SCL	25 x 25	9.1	94	asymm.
STRADA-SQ-T-DWC	25 x 25	9.1	93	asymm.
STRADA-SQ-VSM	25 x 25	6.9	93	152
STRADA-SQ-FT	25 x 25	12.5	90	asymm.
STRADA-SQ-PX	25 x 25	9.2	93	asymm.
STRADA-SQ-FW	25 x 25	15.3	90	asymm.

\* Available also with beam direction rotated 90°

FWHM angles, efficiencies and cd/lm values contained herein are typical values. Actual measured values depend of the specific LED/optic combination. Go to [ledil.com](http://ledil.com) for LED specific values and product datasheets.

## STRADA-2X2 modules

PATENTED

Compatibility: Up to 5050 sized LED packages

STRADA-2X2 glare reducing shade available in black and white. Check compatibility.

name	dimensions	height	typ. eff.	typ. FWHM
STRADA-2X2-T1 **	50 x 50	7.8	94	asymm.
STRADA-2X2-T2 **	50 x 50	7.7	94	asymm.
STRADA-2X2-T2-C	50 x 50	7.3	94	asymm.
STRADA-2X2-T2-M **	50 x 50	11.9	94	asymm.
STRADA-2X2-T3 * / **	50 x 50	7	94	asymm.
STRADA-2X2-T3-M	50 x 50	9.7	93	asymm.
STRADA-2X2-T4	50 x 50	7	94	asymm.
STRADA-2X2-T4-B **	50 x 50	9.0	93	asymm.
STRADA-2X2-ME **	50 x 50	8.2	94	asymm.
STRADA-2X2-ME-WIDE1	50 x 50	8.3	84	asymm.
STRADA-2X2-ME-WIDE2	50 x 50	7	81	asymm.
STRADA-2X2-ME-N	50 x 50	6.7	94	asymm.
STRADA-2X2-MEW	50 x 50	10.2	88	asymm.
STRADA-2X2-DWC **	50 x 50	6	93	asymm.
STRADA-2X2-DNW	50 x 50	11	93	asymm.
STRADA-2X2-A-T	50 x 50	7.3	93	asymm.
STRADA-2X2-VSM**	50 x 50	6.1	94	150
STRADA-2X2-CAT	50 x 50	6.2	94	asymm.
STRADA-2X2-CAT-B **	50 x 50	7.7	94	asymm.
STRADA-2X2-SCL **	50 x 50	7.8	94	asymm.
STRADA-2X2-FW	50 x 50	11	92	asymm.
STRADA-2X2-FN **	50 x 50	10	94	asymm.
STRADA-2X2-FR	50 x 50	11.8	93	15 + 16
STRADA-2X2-DN	50 x 50	8.1	94	asymm.
STRADA-2X2-XW	50 x 50	7	94	asymm.
STRADA-2X2-B2-STP	50 x 50	5.2	93	asymm.
STRADA-2X2-C-STP **	50 x 50	6.3	94	asymm.
STRADA-2X2-PX **	50 x 50	8	94	asymm.
STRADA-2X2-PXL	50 x 50	8	94	asymm.
STRADA-2X2-NHS	50 x 50	9.8	90	asymm.
STRADA-2X2-CY **	50 x 50	7.8	94	120
STRADA-2X2-TF	50 x 50	8.7	94	asymm.
STRADA-2X2-FS3 **	50 x 50	12	94	asymm.
STRADA-2X2-LN1	50 x 50	7.1	94	asymm.
STRADA-2X2-LM1	50 x 50	7.2	94	asymm.
STRADA-2X2-LW1	50 x 50	7.2	94	asymm.
STRADA-2X2-J1-PC	50 x 50	7.1	88	asymm.
STRADA-2X2-T1-M	50 x 50	6.5	94	asymm.
STRADA-2X2-DB	50 x 50	8.1	92	asymm.

\* Available in silicone \*\* Available also in PC

## STRADA-2X2CSP

PATENTED

Compatibility: Designed for cost driven CSP (chip scale package) LEDs, and optimized for high-power CSPs.

Can be used with a cluster of 4 CSP LEDs under one optic.

name	height	dimensions	typ. eff.	typ. FWHM
STRADA-2X2CSP-SCL	7.5	50 x 50	94	asymm.
STRADA-2X2CSP-VSM	7.0	50 x 50	94	150
STRADA-2X2CSP-T2	7.7	50 x 50	94	asymm.
STRADA-2X2CSP-T3	6.5	50 x 50	94	asymm.
STRADA-2X2CSP-T4-B	6.8	50 x 50	94	asymm.
STRADA-2X2CSP-ME	6.6	50 x 50	93	asymm.

# Street & Area lighting

## STRADA-2X2-5050

PATENTED

Compatibility: Flat 5050 size LED packages

name	dimensions	height	typ. eff.	typ. FWHM
STRADA-2X2-5050-T2-C	50 x 50	7.0	85	asymm.
STRADA-2X2-5050-T2-C2	50 x 50	7.4	94	asymm.
STRADA-2X2-5050-T2-C3	50 x 50	9.7	94	asymm.
STRADA-2X2-5050-T2-M	50 x 50	7.2	79	asymm.
STRADA-2X2-5050-T3-M	50 x 50	7.3	92	asymm.
STRADA-2X2-5050-ME3 <b>NEW</b>	50 x 50	7.9	88	asymm.
STRADA-2X2-5050-FR	50 x 50	11.8	93	asymm.
STRADA-2X2-5050-SCL	50 x 50	7.1	94	asymm.
STRADA-2X2-5050-DWC	50 x 50	7.4	93	asymm.
STRADA-2X2-5050-LN1	50 x 50	6.5	89	asymm.
STRADA-2X2-5050-LW1	50 x 50	6.5	80	asymm.

## STRADA-2X3-5050

PATENTED

Compatibility: Flat 5050 size LED packages

name	dimensions	height	typ. eff.	typ. FWHM
STRADA-2X3-5050-T2 <b>NEW</b>	50 x 50	7.2	92	asymm.
STRADA-2X3-5050-T3 <b>NEW</b>	50 x 50	TBA	92	asymm.
STRADA-2X3-5050-T4 <b>NEW</b>	50 x 50	TBA	92	asymm.
STRADA-2X3-5050-VSM <b>NEW</b>	50 x 50	7.8	94	asymm.

## STRADA-IP-2X6 modules

PATENTED

Compatibility: Up to 5050 size LED packages

name	dimensions	height	typ. eff.	typ. FWHM
STRADA-IP-2X6-T2 *	173 x 71.4	9.2	94	asymm.
STRADA-IP-2X6-T2-B *	173 x 71.4	12.0	95	asymm.
STRADA-IP-2X6-T2-B-90	173 x 71.4	12.0	94	asymm.
STRADA-IP-2X6-T2-C-90 *	173 x 71.4	9.0	94	asymm.
STRADA-IP-2X6-T2-L	173 x 71.4	13	93	asymm.
STRADA-IP-2X6-T3 *	173 x 71.4	8.5	94	asymm.
STRADA-IP-2X6-T3-B	173 x 71.4	12.8	94	asymm.
STRADA-IP-2X6-T3-B-90	173 x 71.4	12.8	94	asymm.
STRADA-IP-2X6-T3-L *	173 x 71.4	13	94	asymm.
STRADA-IP-2X6-T4-B *	173 x 71.4	10.6	91	asymm.
STRADA-IP-2X6-T4-B-90-PC	173 x 71.4	10.6	77	asymm.
STRADA-IP-2X6-DWC *	173 x 71.4	7.9	93	asymm.
STRADA-IP-2X6-DWC-90 *	173 x 71.4	9.0	94	asymm.
STRADA-IP-2X6-DWC-B	173 x 71.4	8.9	94	asymm.
STRADA-IP-2X6-ME *	173 x 71.4	8.4	94	asymm.
STRADA-IP-2X6-VSM *	173 x 71.4	9	94	140
STRADA-IP-2X6-SCL *	173 x 71.4	9.6	94	asymm.
STRADA-IP-2X6-FW	173 x 71.4	13.1	92	asymm.
STRADA-IP-2X6-PX	173 x 71.4	9.6	94	asymm.
STRADA-IP-2X6-PXL	173 x 71.4	10.3	94	asymm.

\* Available also in PC

## STRADA-6X1 modules

Compatibility: Up to 3535 size LED packages

name	dimensions	h	typ. eff.	typ. FWHM
STRADA-T-6X1-ME	119.8 x 25.2	8.2	93	asymm.
STRADA-T-6X1-DNW	119.8 x 25.2	5.6	93	asymm.
STRADA-T-6X1-DWC	119.8 x 25.2	5.5	94	asymm.



STRADA-2X2-5050



STRADA-2X3-5050



STRADA-IP-2X6



STRADA-6X1

NEW

NEW

## STRADA-IP-16MX modules

PATENTED

Compatibility: CSP LEDs

name	dimensions	height	typ. eff.	typ. FWHM
STRADA-IP-16MX-T2-M	90 x 90	8.6	90	asymm.
STRADA-IP-16MX-T3-M	90 x 90	8.6	90	asymm.
STRADA-IP-16MX-VSM	90 x 90	8.6	90	145
STRADA-IP-16MX-T4	90 x 90	8.6	94	asymm.
STRADA-IP-16MX-SCL	90 x 90	8.6	93	asymm.

## STRADA-IP-8MX modules

PATENTED

Compatibility: Optimized for flat 5050 packages (without dome)

name	dimensions	height	typ. eff.	typ. FWHM
STRADA-IP-8MX-T2-C-PC	90 x 90	9.6	85	asymm.
STRADA-IP-8MX-SCL-PC	90 x 90	11.2	86	asymm.
STRADA-IP-8MX-DWC2-PC	90 x 90	10.1	89	asymm.

## STRADA-2X2MX modules

PATENTED

Compatibility: Up to 7070 size LED packages

name	dimensions	height	typ. eff.	typ. FWHM
STRADA-2X2MX-8-DWC	90 x 90	11.3	94	asymm.
STRADA-2X2MX-8-VSM	90 x 90	13.4	94	150
STRADA-2X2MX-8-SCL	90 x 90	13.2	94	asymm.
STRADA-2X2MX-8-T4-B	90 x 90	13.2	94	asymm.
STRADA-2X2MX-8-T2	90 x 90	12.6	94	asymm.
STRADA-2X2MX-8-T2-S	90 x 90	11.1	94	asymm.

## Silicone STRADA-2X2MXS modules

PATENTED

Compatibility: Up to 7070 size LED packages

name	dimensions	height	typ. eff.	typ. FWHM
STRADA-2X2MXS-DWC2	90 x 90	14	93	asymm.
STRADA-2X2MXS-VSM	90 x 90	13	92	150
STRADA-2X2MXS-T2	90 x 90	12.6	91	asymm.
STRADA-2X2MXS-T3	90 x 90	14.8	89	asymm.
STRADA-2X2MXS-T4-B	90 x 90	14.2	88	asymm.

## SITARA

[www.ledil.com/sitara](http://www.ledil.com/sitara)

Compatibility: Optimized for 5050 size flat SMD LEDs

name	dimensions	height	typ. eff.	typ. FWHM
SITARA-2X2-T2	50 x 50	9.3	78	asymm.
SITARA-T1-A	18 x 18	5.9	88	asymm.
SITARA-T2	18 x 18	7.7	83	asymm.
SITARA-HB-S	18 x 18	5.0	94	35
SITARA-HB-M	18 x 18	5.7	94	65

## TATIANA

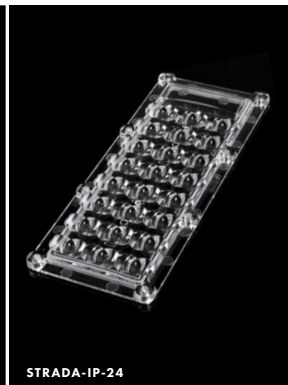
[www.ledil.com/tatiana](http://www.ledil.com/tatiana)

Compatibility: Up to 3535 size LED packages

name	dimensions	height	typ. FWHM	typ. eff.	typ. cd/lm
TATIANA-1X4-B	102 x 25	7.7	144 + 62	94	0.54



# Street & Area lighting



NEW

## THEIA

[www.ledil.com/theia](http://www.ledil.com/theia)



Compatibility: Up to 3535 size flat LED packages

name	dimensions	height	typ. eff.	typ. FWHM
THEIA-IP-32-T2	173 x 71.4	8.6	90	asymm.



T2

## STRADA-IP-24 modules

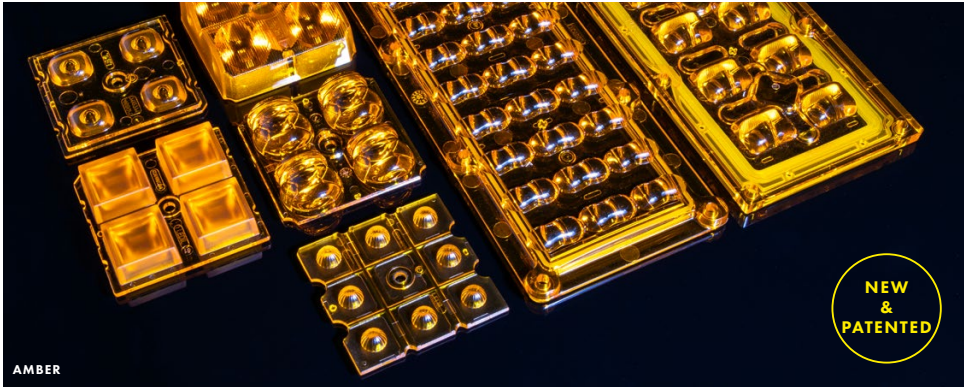
**PATENTED** [www.ledil.com/strada](http://www.ledil.com/strada)

Compatibility: Flat 5050 size LED packages

name	dimensions	height	typ. eff.	typ. FWHM
STRADA-IP-24-T2-M*	173 x 71.4	9.1	93	asymm.
STRADA-IP-24-T3-M*	173 x 71.4	9.0	88	asymm.
STRADA-IP-24-T4-B**	173 x 71.4	12.0	80	asymm.
STRADA-IP-24-DWC*	173 x 71.4	9.0	89	asymm.
STRADA-IP-24-VSM*	173 x 71.4	9.8	91	asymm.
STRADA-IP-24-SCL <b>NEW</b>	173 x 71.4	9.0	90	asymm.
STRADA-IP-24-ME <b>NEW</b>	173 x 71.4	9.0	93	asymm.

\* Available also in PC \*\* PC version coming





## AMBER

PATENTED [www.ledil.com/amber](http://www.ledil.com/amber)



### AMBER-2X2

Compatibility: up to 5050 size LED packages

name	d	h	typ. eff.	typ. FWHM
AMBER-2X2-T1	50 x 50	7.8	78	asymm.
AMBER-2X2-T2	50 x 50	7.8	76	asymm.
AMBER-2X2-T3	50 x 50	7.1	74	asymm.
AMBER-2X2-T4	50 x 50	7.7	79	asymm.
AMBER-2X2-ME	50 x 50	7.1	75	asymm.
AMBER-2X2-ME-WIDE1 <b>NEW</b>	50 x 50	8.9	76	asymm.
AMBER-2X2-SCL	50 x 50	7.8	75	asymm.
AMBER-2X2-VSM	50 x 50	6.1	79	145
AMBER-2X2-DWC	50 x 50	6.0	80	asymm.
AMBER-2X2-M <b>NEW</b>	50 x 50	8.5	70	25
AMBER-2X2-W	50 x 50	8.5	70	50
AMBER-2X2-WWW <b>NEW</b>	50 x 50	10.0	69	100
AMBER-2X2-FT6 <b>NEW</b>	50 x 50	11.0	73	asymm.

### AMBER-2X2-5050

Compatibility: Flat 5050 size LED packages

AMBER-2X2-5050-S	50 x 50	10.4	70	25
------------------	---------	------	----	----

### AMBER-8

Compatibility: Up to 3535 size mid- and high-power LEDs

AMBER-8-HB-M <b>NEW</b>	50 x 50	7.1	84	60
AMBER-8-HB-W <b>NEW</b>	50 x 50	7.1	78	90



### AMBER-16

Compatibility: Up to 3535 size mid-power LEDs

AMBER-16-SCL <b>NEW</b>	50 x 50	4.4	79	asymm.
AMBER-16-ME <b>NEW</b>	50 x 50	4.9	79	asymm.



### AMBER-IP-2X6

Compatibility: Up to 5050 size LED packages

AMBER-IP-2X6-T2 <b>NEW</b>	173 x 71	9.2	72	asymm.
----------------------------	----------	-----	----	--------



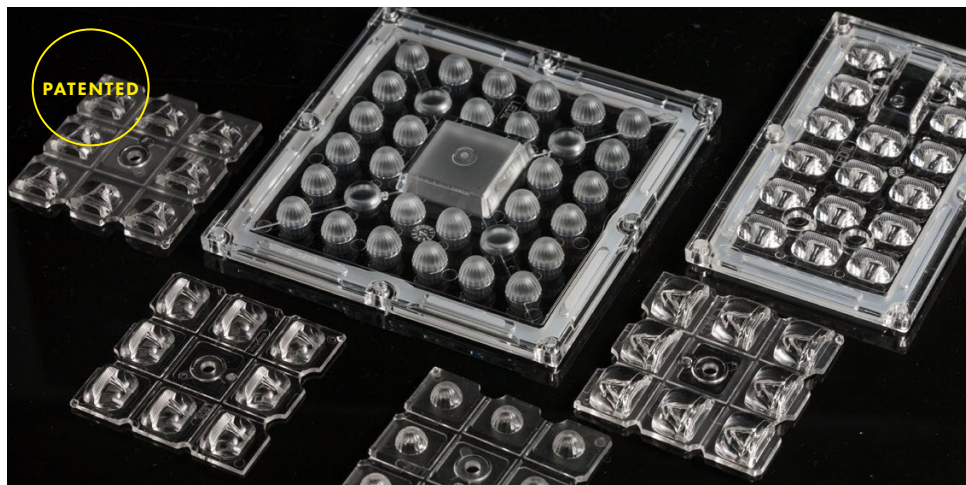
### AMBER-IP-24

Compatibility: Flat 5050 size LED packages

AMBER-IP-24-T2-M <b>NEW</b>	173 x 71	9.2	72	asymm.
-----------------------------	----------	-----	----	--------



# Street & Area lighting



## STRADELLA

[www.ledil.com/stradella](http://www.ledil.com/stradella)

### Compatibility:

- STRADELLA single lens: Up to 3535 size mid- and high-power LEDs
- STRADELLA-8: Up to 3535 size mid- and high-power LEDs
- STRADELLA-8-CSP: CSP LEDs (top emitting, up to 2.8 x 2.8 x 0.5 mm ), Fortimo FastFlex Gen5
- STRADELLA-8-5050: For flat 5050 size LEDs
- STRADELLA-16: Up to 3535 size mid-power LEDs
- STRADELLA-IP-16: Up to 3535 size mid and high power LEDs
- STRADELLA-IP-28: Up to 3535 size mid and high power LEDs
- STRADELLA-IP-64: Up to 3535 size mid and high power LEDs

### STRADELLA

name	beam type	LEDs	h	d	typ. FWHM	typ. eff.	typ. cd/lm
STRADELLA-CY	wide area lighting	1	4.7	13.9 x 13.9	115	94	0.3
STRADELLA-T2	asymm.	1	5.0	13.9 x 13.9	asymm.	94	0.8
STRADELLA-T3	asymm.	1	5.0	13.9 x 13.9	asymm.	94	0.7
STRADELLA-T4-B	asymm.	1	5.2	13.9 x 13.9	asymm.	93	0.6
STRADELLA-T1-A	asymm.	1	5.3	13.9 x 13.9	asymm.	94	0.9
STRADELLA-HB-S *	spot	1	7.5	13.9 x 13.9	27	95	1.5
STRADELLA-HB-M *	medium	1	5.7	13.9 x 13.9	58	94	0.6
STRADELLA-HB-W *	wide	1	7.1	13.9 x 13.9	87	94	0.5

\* Available also in PC

### STRADELLA-8

name	beam type	LEDs	h	d	typ. FWHM	typ. eff.	typ. cd/lm
STRADELLA-8-HV-ME	asymm.	8	5.5	50 x 50	asymm.	94	0.7
STRADELLA-8-HV-ME-N	asymm.	8	6.0	50 x 50	asymm.	92	0.7
STRADELLA-8-HV-ME3	asymm.	8	5.6	50 x 50	asymm.	93	0.9
STRADELLA-8-HV-CY	wide area lighting	8	4.9	50 x 50	125 + 125	94	0.3
STRADELLA-8-T2 */**	asymm.	8	5.7	50 x 50	asymm.	94	0.8
STRADELLA-8-T3 */**	asymm.	8	5.7	50 x 50	asymm.	94	0.7
STRADELLA-8-VSM*	wide area lighting	8	5.5	50 x 50	143	94	0.4
STRADELLA-8-SCL */**	asymm.	8	5.5	50 x 50	asymm.	93	0.7
STRADELLA-8-T1-A */**	asymm.	8	5.3	50 x 50	asymm.	94	1.0
STRADELLA-8-HB-S */**	spot	8	7.5	50 x 50	27	90	1.8
STRADELLA-8-HB-M */**	medium	8	5.7	50 x 50	58	92	0.7
STRADELLA-8-HB-W */**	wide	8	7.1	50 x 50	87	94	0.5

\* Available in HV versions with different pin locations allowing high voltage circuit designs

\*\* Available also in PC

# Street & Area lighting

## STRADELLA-8-CSP

name	beam type	LEDs	h	d	typ. FWHM	typ. eff.	typ. cd/lm
STRADELLA-8-HV-CSP-LN1	street	8	4.4	50 x 50	asymm.	96	1.0
STRADELLA-8-HV-CSP-LM1	street	8	4.8	50 x 50	asymm.	97	0.9
STRADELLA-8-HV-CSP-LW1	street	8	4.9	50 x 50	asymm.	96	0.9
STRADELLA-8-HV-CSP-VSM	street	8	4.9	50 x 50	asymm.	97	0.6
STRADELLA-8-HV-CSP-SCL	street	8	4.9	50 x 50	asymm.	90	1.0
STRADELLA-8-HV-CSP-T2-M	street	8	4.9	50 x 50	asymm.	97	1.4
STRADELLA-8-HV-CSP-T3-M	street	8	4.9	50 x 50	asymm.	97	1.2

## STRADELLA-8-5050

name	beam type	LEDs	h	d	typ. FWHM	typ. eff.	typ. cd/lm
STRADELLA-8-5050-HB-W-PC	wide	8	5	50 x 50	89	88	0.5

## STRADELLA-16

name	beam type	LEDs	h	d	typ. FWHM	typ. eff.	typ. cd/lm
STRADELLA-16-HB-S *	spot	16	7.5	50 x 50	27	93	1.7
STRADELLA-16-HB-M *	medium	16	5.7	50 x 50	61	93	0.7
STRADELLA-16-HB-M2	medium	16	3.2	50 x 50	55	93	1.0
STRADELLA-16-HB-W *	wide	16	7.1	50 x 50	92	94	0.5
STRADELLA-16-HB-O	oval	16	4.3	50 x 50	asymm.	94	0.8
STRADELLA-16-T1-A *	asymm.	16	4.3	50 x 50	asymm.	94	0.8
STRADELLA-16-T2	asymm.	16	4.7	50 x 50	asymm.	91	0.5
STRADELLA-16-T3	asymm.	16	3.7	50 x 50	asymm.	94	0.6
STRADELLA-16-SCL	asymm.	16	4.4	50 x 50	asymm.	94	0.6
STRADELLA-16-VSM	wide area lighting.	16	4.2	50 x 50	140	86	0.5
STRADELLA-16-T4	asymm.	16	5.3	50 x 50	asymm.	81	0.5
STRADELLA-16-ME	asymm.	16	4.9	50 x 50	asymm.	94	0.6

## STRADELLA-IP-16

name	beam type	LEDs	h	d	typ. FWHM	typ. eff.	typ. cd/lm
STRADELLA-IP-16-T2-PC	asymm.	16	8.5	100 x 60	asymm.	94	0.7

## STRADELLA-IP-28

name	beam type	LEDs	h	d	typ. FWHM	typ. eff.	typ. cd/lm
STRADELLA-IP-28-T1-A *	asymm.	28	9.5	100 x 100	asymm.	94	0.8
STRADELLA-IP-28-T2 *	asymm.	28	9.2	100 x 100	asymm.	94	0.8
STRADELLA-IP-28-T3 *	asymm.	28	9.2	100 x 100	asymm.	94	0.7
STRADELLA-IP-28-T4B *	asymm.	28	9.2	100 x 100	asymm.	91	0.7
STRADELLA-IP-28-VSM *	wide area lighting	28	9.5	100 x 100	140	94	0.4
STRADELLA-IP-28-SCL *	asymm.	28	9.5	100 x 100	asymm.	94	0.6
STRADELLA-IP-28-HB-S *	spot	28	9.5	100 x 100	25	92	1.6
STRADELLA-IP-28-HB-M *	medium	28	9.5	100 x 100	65	94	0.7
STRADELLA-IP-28-HB-W *	wide	28	9.5	100 x 100	90	94	0.4

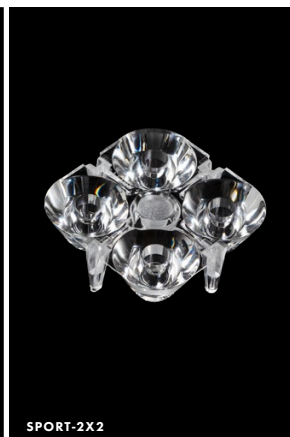
\* Available also in PC

## STRADELLA-IP-64

name	beam type	LEDs	h	d	typ. FWHM	typ. eff.	typ. cd/lm
STRADELLA-IP-64-T2-PC	street	64	9.2	253 x 74	asymm.	94	0.8
STRADELLA-IP-64-HB-S	spot	64	9.2	253 x 74	30	92	2.0
STRADELLA-IP-64-HB-M	medium	64	9.2	253 x 74	60	90	1.0
STRADELLA-IP-64-HB-W	wide	64	9.2	253 x 74	90	92	0.5
STRADELLA-IP-64-HB-O	oval	64	9.2	253 x 74	30 + 90	90	1.1
STRADELLA-IP-64-VSM *	wide area lighting	64	9.7	253 x 74	140	92	0.6
STRADELLA-IP-64-T3-M	COMING asymm.	64	9.7	253 x 74	asymm.	91	0.6
STRADELLA-IP-64-T4-B *	asymm.	64	9.7	253 x 74	asymm.	94	0.6

\* Available also in PC

# Street & Area lighting



## SPORT

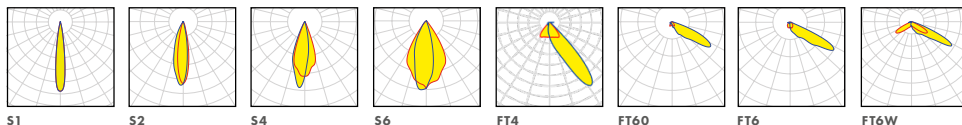
[www.ledil.com/sport](http://www.ledil.com/sport)

### SPORT-2X2

Compatibility: Optimized for HP 3535 and compatible with up to 5050 size flat LED packages

name	d	h	typ. FWHM	typ. eff.	typ. cd/lm
SPORT-2X2-S1 *	50 x 50	13.6	10	92	9.0
SPORT-2X2-S2 *	50 x 50	14.2	asymm.	97	4.9
SPORT-2X2-S4 *	50 x 50	14.4	asymm.	97	2.9
SPORT-2X2-S6 *	50 x 50	15.5	asymm.	97	1.8
SPORT-2X2-FT4 * <b>NEW</b>	50 x 50	10.8	asymm.	94	1.6
SPORT-2X2-FT6 *	50 x 50	11.0	asymm.	92	1.2
SPORT-2X2-FT60 *	50 x 50	15.5	asymm.	88	1.3
SPORT-2X2-FT6W *	50 x 50	12.3	asymm.	97	1.1

\* Available also in HT (High Temperature PMMA)



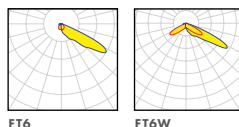
## NEW

### SPORT-IP-24

Compatibility: Optimised for flat 5050 and compatible with HP 3535 LED packages

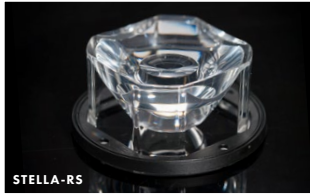
SPORT-IP-24-FT6 * <b>NEW</b>	173 x 71.4	10.8	asymm.	91	1.0
SPORT-IP-24-FT6W * <b>NEW</b>	173 x 71.4	10.9	asymm.	92	0.7

\* Available also in HT (High Temperature PMMA)





STELLA



STELLA-RS



JENNY

## STELLA

[www.ledil.com/stella](http://www.ledil.com/stella)

### STELLA-G2

Compatibility:

- Optimized for up to 23 mm and supports up to 30 mm LES size COBs
- Compatible with connectors from B+W, BJB, TE (Ø 50 mm and up to 5.9 mm height)

name	d	h	typ. eff.	typ. FWHM
STELLA-G2-T2	90	26.5	86	asymm.
STELLA-G2-T3	90	40.2	91	asymm.
STELLA-G2-T4	90	45.2	89	asymm.
STELLA-G2-VSM	90	25.6	91	asymm.

## STELLA

Compatibility:

- Asymmetric STELLA's: up to 23 mm LES size
- Symmetric STELLA's: up to 30 mm LES size
- 3rd party connectors from BJB, B+W and TE
- Installation frame made from aluminium available for FRESNEL and WWW beams



name	d	h	typ. eff.	typ. FWHM
STELLA-A	90	22	92	asymm.
STELLA-HB	90	19.5	93	76
STELLA-HB-WWW	90	11.3	88	97
STELLA-T4	90	26.9	92	asymm.
STELLA-VSM	90	20.7	94	asymm.
STELLA-FRESNEL	90	23	89	27
STELLA-DWC2	90	19.3	92	asymm.
STELLA-RS	90	39.2	94	25
STELLA-CLAMP-CXA15-18				

## JENNY

[www.ledil.com/jenny](http://www.ledil.com/jenny)



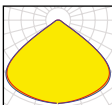
Comes either as a single lens or in a 8 lens array with possibility to separate lenses individually.

Can be installed with glue optional holder.

Compatibility: Up to 7070 size LED packages

name	d	h	typ. eff.	typ. FWHM
JENNY-CY *	35 x 35	11.5	94	106 + 106
JENNY-T4 *	35 x 35	17	92	asymm.
JENNY-CY-G2 *	35 x 35	11.5	94	100
JENNY-T4-G2 *	35 x 35	17	93	asymm.
JENNY-20 *	35 x 35	14.5	96	20
JENNY-40 *	35 x 35	15	96	40
JENNY-60 *	35 x 35	13.4	94	60
JENNY-FT45 *	35 x 35	20.7	92	asymm.
JENNY-FT65 *	35 x 35	15.4	93	asymm.

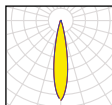
\* Available also in 8 lens array



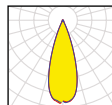
CY(-G2)



T4(-G2)



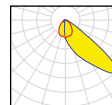
20



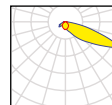
40



60


















FT45



FT65

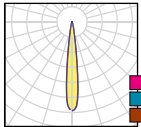
# Highbay lighting

## Highbay solutions

- |  |  |
|--|--|
|  HB-SQ        |  STRADELLA-HB       |
|  HB-2X2       |  STRADELLA-8-HB     |
|  HB-2X2-5050  |  STRADELLA-16-HB    |
|  HB-2X3-5050  |  STRADELLA-IP-28-HB |
|  HB-2X2MX     |  STRADELLA-IP-64-HB |
|  HB-2X2MX5    |  SITARA-HB          |
|  HB-IP-8MX    |  VICTORIA           |
|  HB-IP-24     |  VICTORIA-MINI      |
|  HB-IP-2X6    |  STELLA             |
|  HB-IP-2X6-G2 |  AMBER-2X2          |

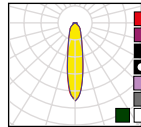


### ~15° High bay

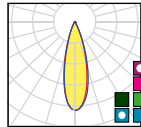


RS

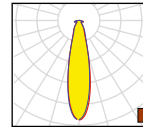
### ~30° High bay



S

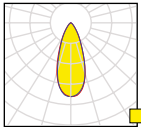


M

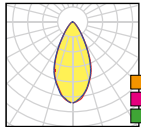


FRESNEL

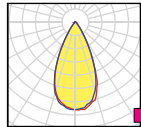
### ~45° Mid bay



A

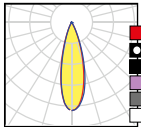


W

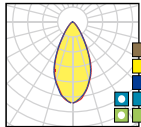


RW

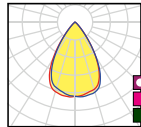
### ~60° Mid bay



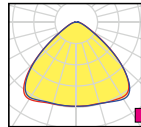
M



W

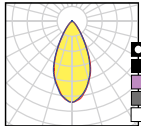


WW

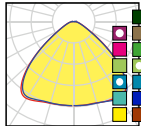


WWW

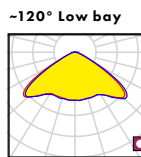
### ~90° Low bay



W



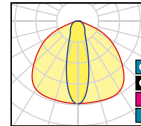
WWW



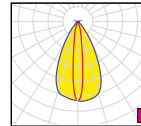
UW

### ~120° Low bay

### Oval



O



ON

## HB FAMILY

[www.ledil.com/highbay](http://www.ledil.com/highbay)

**HB-SQ**  
 Dimensions: 25 x 25 mm  
 Compatibility:  
 – Up to 7070 size LED packages

**HB-IP-8MX**  
 Dimensions: 90 x 90 mm  
 Compatibility:  
 – Optimized for flat 5050 packages (without dome)

**HB-IP-2X6-G2**  
 Dimensions: 172 x 71 mm  
 Compatibility:  
 – Optimized for flat high power 5050 size LED packages  
 – Compatible with up to 5050 size LED packages

**HB-2X2**  
 Dimensions: 50 x 50 mm  
 Compatibility:  
 – Up to 5050 size LED packages

**HB-2X2-5050**  
 Dimensions 50 x 50 mm  
 Compatibility:  
 – For flat 5050 size LED packages

**HB-IP-2X6**  
 Dimensions: 173 x 71.4 mm  
 Compatibility:  
 – Up to 5050 size LED packages

**HB-2X3-5050** **NEW**  
 Dimensions 50 x 50 mm  
 Compatibility:  
 – For flat 5050 size LED packages

**HB-IP-24** **NEW**  
 Dimensions: 173 x 71.4 mm  
 Compatibility:  
 – Up to 5050 size LED packages

**HB-2X2MX & silicone 2X2MXS**  
 Dimensions: 90 x 90 mm  
 Compatibility:  
 – Up to 7070 size LED packages



## STRADELLA FAMILY

[www.ledil.com/stradella](http://www.ledil.com/stradella)

**STRADELLA-HB**  
 Dimensions: 13.9 x 13.9 mm  
 Compatibility:  
 – Up to 3535 size LED packages

**STRADELLA-IP-28-HB**  
 Dimensions: 100 x 100 mm  
 Compatibility:  
 – Up to 3535 size LED packages

**STRADELLA-16-HB**  
 Dimensions: 49.5 x 49.5 mm  
 Compatibility:  
 – Up to 3535 size LED packages

**STRADELLA-IP-64-HB**  
 Dimensions: 74 x 253 mm  
 Compatibility:  
 – Up to 3535 size LED packages

**STRADELLA-8-HB**  
 Dimensions: 49.5 x 49.5 mm  
 Compatibility:  
 – Up to 3535 size LED packages



## VICTORIA / VICTORIA-MINI

[www.ledil.com/victoria](http://www.ledil.com/victoria)

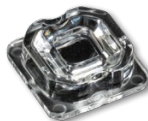
Diameter: 300 mm / 180 mm  
 Compatibility:  
 – Optimized for 2835 and compatible with up to 5630 size mid-power LED packages  
 – Recommended to be used with two LEDs per one optic which can be up to 5630 in size  
 – Can be used with single domeless 5050 size LED packages



## SITARA-HB FAMILY

[www.ledil.com/sitara](http://www.ledil.com/sitara)

Dimensions: 18 x 18 mm  
 Compatibility:  
 – Optimized for flat high-power 5050 size LED packages



## STELLA FAMILY

[www.ledil.com/stella](http://www.ledil.com/stella)

Diameter: 90 mm  
 Compatibility:  
 – Asymmetric STELLA's: up to 23 mm LES size  
 – Symmetric STELLA's: up to 30 mm LES size  
 – 3rd party connectors from BJB, B+W and TE



# Custom solutions

In addition to our wide product portfolio of standard products we also offer custom tailored solutions.

Our long expertise in optical design and close collaboration with our customers to meet their special needs is in some cases the only way to find the best solution for a project.

## When is a customized solution needed?

- No mechanically or optically suitable product available
- Looking for a unique design solution and differentiation
- Meeting special requirements for certain applications
- Need for specific material

## Why LEDiL?

- Full turnkey service
- No need for external 3D-designers
- Accurate light laboratory measurements
- Production facilities on different continents
- Wide testing capabilities to support product development
- Thermal analysis service from the beginning of a project
- Technical support during the whole lifetime of a product
- Broad recognition in the industry as a manufacturer of high quality products

If you need a customized product please contact your local sales representative to discuss finding the best possible solution for your requirements.





ADELIA	32	LILIAN	23
ADELY	52	LINDA	27
AMBER	49	LINNEA	23
AMY	16	LISA	6
ANGELA / ANGELETTE / ANGELINA	38	LOTTA	12
ANGIE	22	MIRA	10
ANNA	22	MIRELLA	35
BARBARA	36	MOLLY	18
BELLA	12	OLGA	20
BILLIE	10	RGBX	15
BOOM	39	RITA	39
BRIANNA	29	RONDA	18
BRIDGET	39	ROSE	8
BROOKE	34	SAGA	20
CARMEN	19	SANDRA	21
CLAUDIA	26	SATU	21
CORAL	15	SEANNA	14
CRYSTAL	14	SHELLY	23
CUTE	21	SIRI	12
DAISY	28	SITARA	47
DAHLIA	26	SPORT-2X2	52
DALINE	30	SPORT-IP-24	52
DARCY	30	STELLA	53
ELLA	33	STRADA (single)	12
EMERALD	13	STRADA-SQ	44
EMILY	11	STRADA-2X2	45
EMMA	12	STRADA-2X2CSP	45
EVA	10	STRADA-2X2-5050/-2X3-5050	46
FILIPPA	14	STRADA-IP-2X6	46
FLARE	14	STRADA-IP-24	48
FLORENCE	24	STRADA-IP-8MX	47
FLORENTINA	31	STRADA-IP-16MX	47
GABRIELLA	15	STRADA-2X2MX/MXS	47
GT3 / GT4	21	STRADA-6X1	46
HB-SQ	55	STRADELLA (single), -8	50
HB-2X2/ HB-2X3	55	STRADELLA-8-CSP/-5050	51
HB-IP-2X6	55	STRADELLA-16	51
HB-IP-24	55	STRADELLA-IP-16/28/64	51
HB-2X2MX / MXS	55	SURI	15
HEIDI	11	TAMPA	22
HELENA	13	TATIANA	47
IDA	22	THEIA	48
ILONA	17	TINA	7
IRENE	10	TITANUM	11
ISLA	25	TUIJA	21
IRIE	10	VANESSA	26
IRIS	10	VERONICA	6
JENNY	53	VICTORIA	55
JULIA	12	VIOLET	26
KIKI	12	VIOLETTA	8
LARISA	6	VIRPI	22
LAURA	9	WINNIE	19
LEIA	13	YASMEEN	17
LEILA	9	ZOE	13
LENA / LENINA	37	ZORYA	22
LIANNA	25	ZORYA-MINI	20

# LEDiL

perfecting light

Subscribe to LEDiL newsletter to get latest news  
about product launches and reference cases  
[www.ledil.com/subscribe](http://www.ledil.com/subscribe)



[www.ledil.com](http://www.ledil.com)

**Ledil Oy**  
(Headquarters)  
Joensuunkatu 7  
FI-24100 SALO  
Finland

**Ledil Inc.**  
228 West Page  
Street Suite D  
Sycamore IL 60178  
USA

**LEDiL Optics Technology (Shenzhen) Ltd.**  
#405, Block B, ShenZhen Casic Motor Building,  
No.7 LangShan #2 Road, Hi-Tech Ind. Park(N.),  
Nanshan District, Shenzhen, 518057,  
P.R.China

Local sales and technical support: [www.ledil.com/contacts](http://www.ledil.com/contacts)

Distribution partners: [www.ledil.com/contacts/distributors](http://www.ledil.com/contacts/distributors)

Shipping locations: Salo, Finland and Hong Kong, China