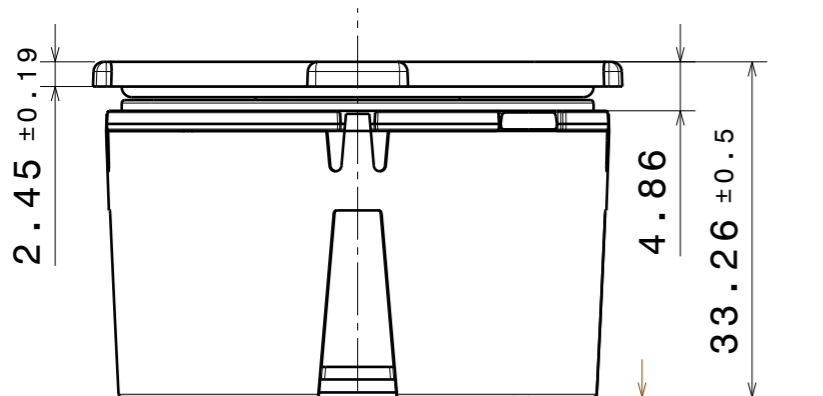
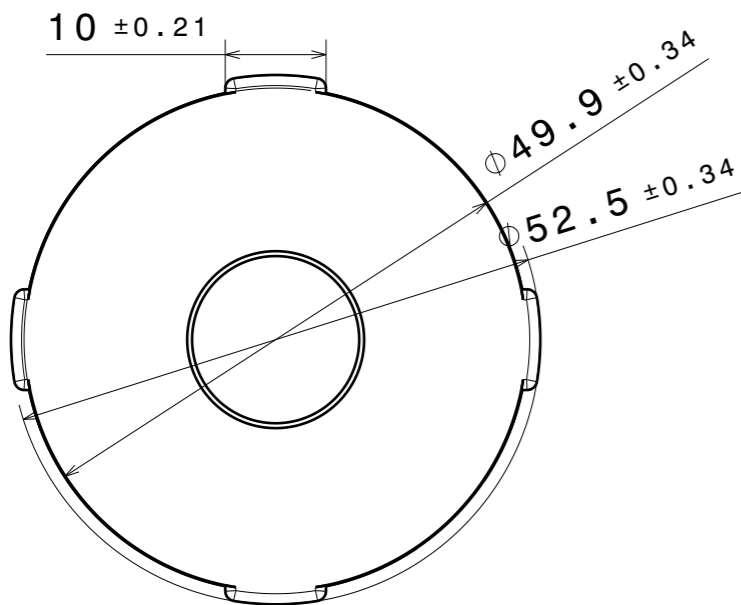


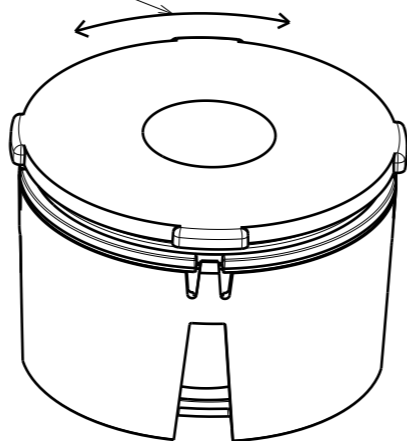
SUB-lens rotate freely.  
Beam angle changing smoothly.  
Spot-Wide-Spot-Wide....



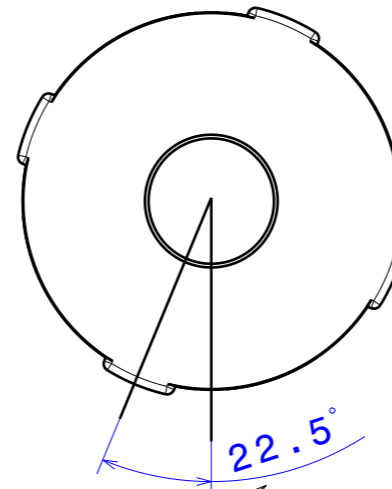
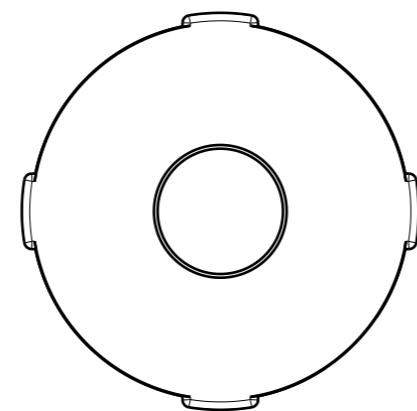
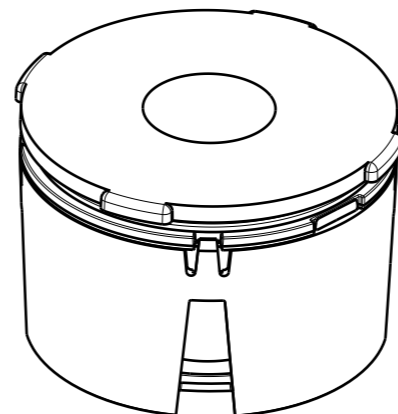
Optically optimal  
LES/LED chip location

Beam angle:

SPOT position

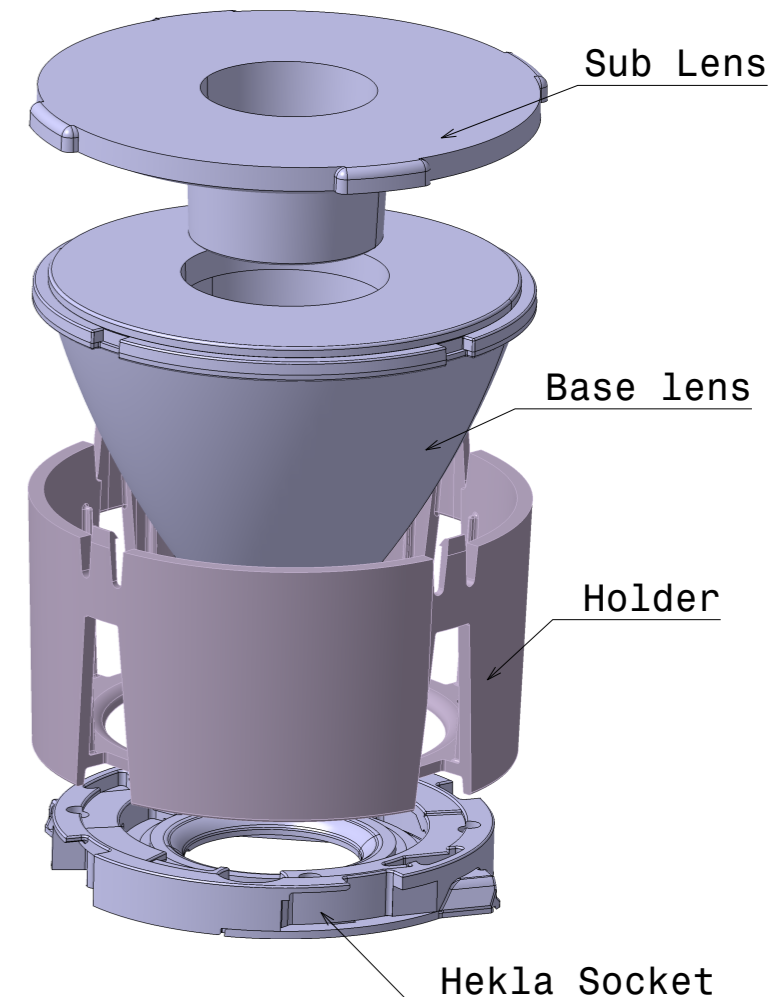


Wide position



Sub lens rotation angle between  
spot to wide beam angle

Example assembly:



CN17738\_YASMEEN-50-ZOOM-C  
**COMPONENTS**

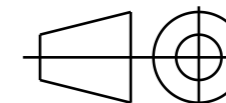
INDEX	PART	TYPE	MATERIAL	COLOR
1	C17769_YASMEEN-50-ZOOM-SUB	Sub-Lens	PMMA	Clear
2	C17735_YASMEEN-50-ZOOM	Base-Lens	PMMA	Clear
3	C17397_YASMEEN-50-HLD-C	Holder	PC	Black

**MECHANICAL DRAWING**

PRODUCT  
**YASMEEN**

Plastic moulding general tolerances according to DIN 16901-130 and applies if not otherwise shown in the drawing. Silicone moulding general tolerances according to ISO 3302-1 Class M3 and applies if not otherwise shown in the drawing.

FIRST ANGLE PROJECTION:



**LEDiL**®

This drawing is the property of LEDiL Oy. It may not be copied or otherwise distributed without prior written permission from LEDiL Oy.

SCALE 4:3

WEIGHT -

A3 SHEET 1/1

**Notes**

<span style="color: red;">●</span>	PCB or heatsink level.
<span style="color: green;">●</span>	LED location
	Ensure LED fitting from a product specific 3D model available from <a href="http://www.ledil.com">www.ledil.com</a>
	For more details about installation please see LEDiL Installation Guide on <a href="http://www.ledil.com">www.ledil.com</a>