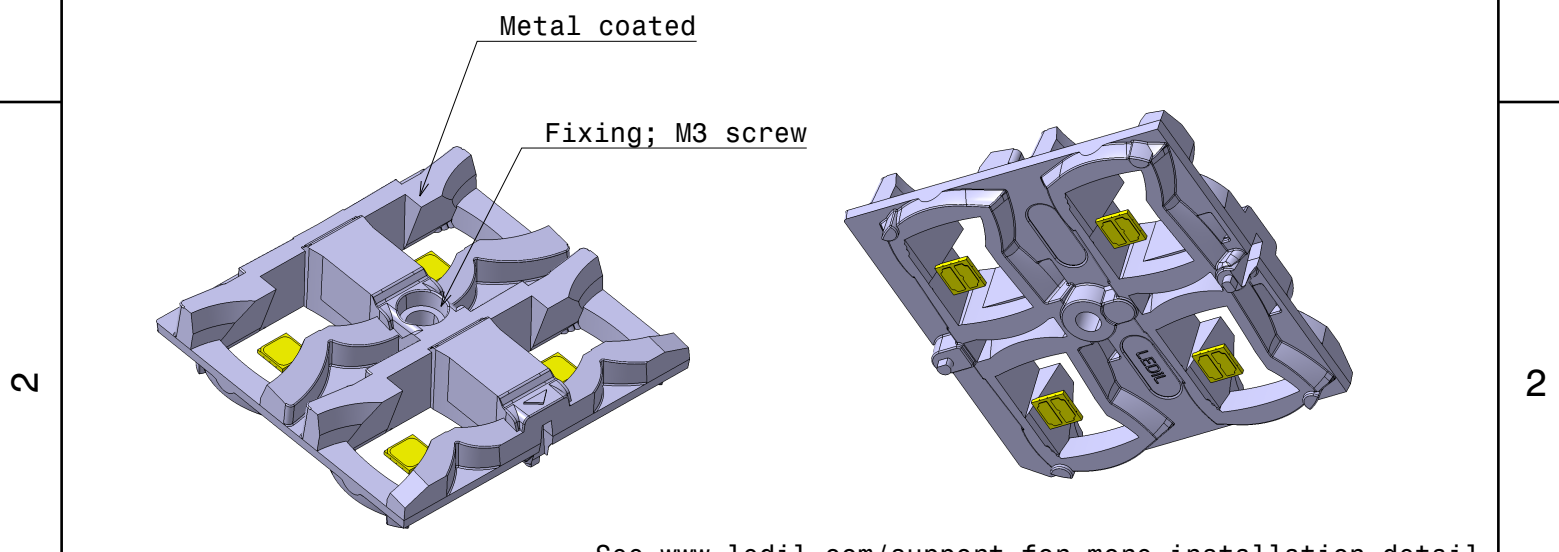
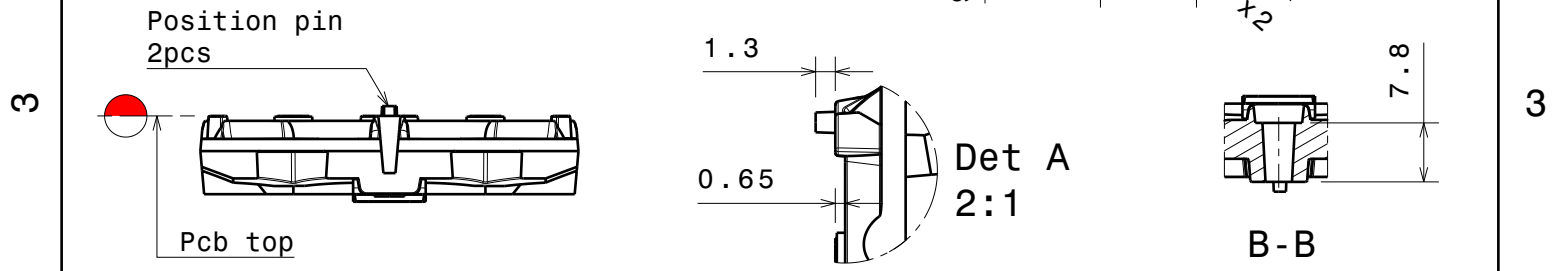
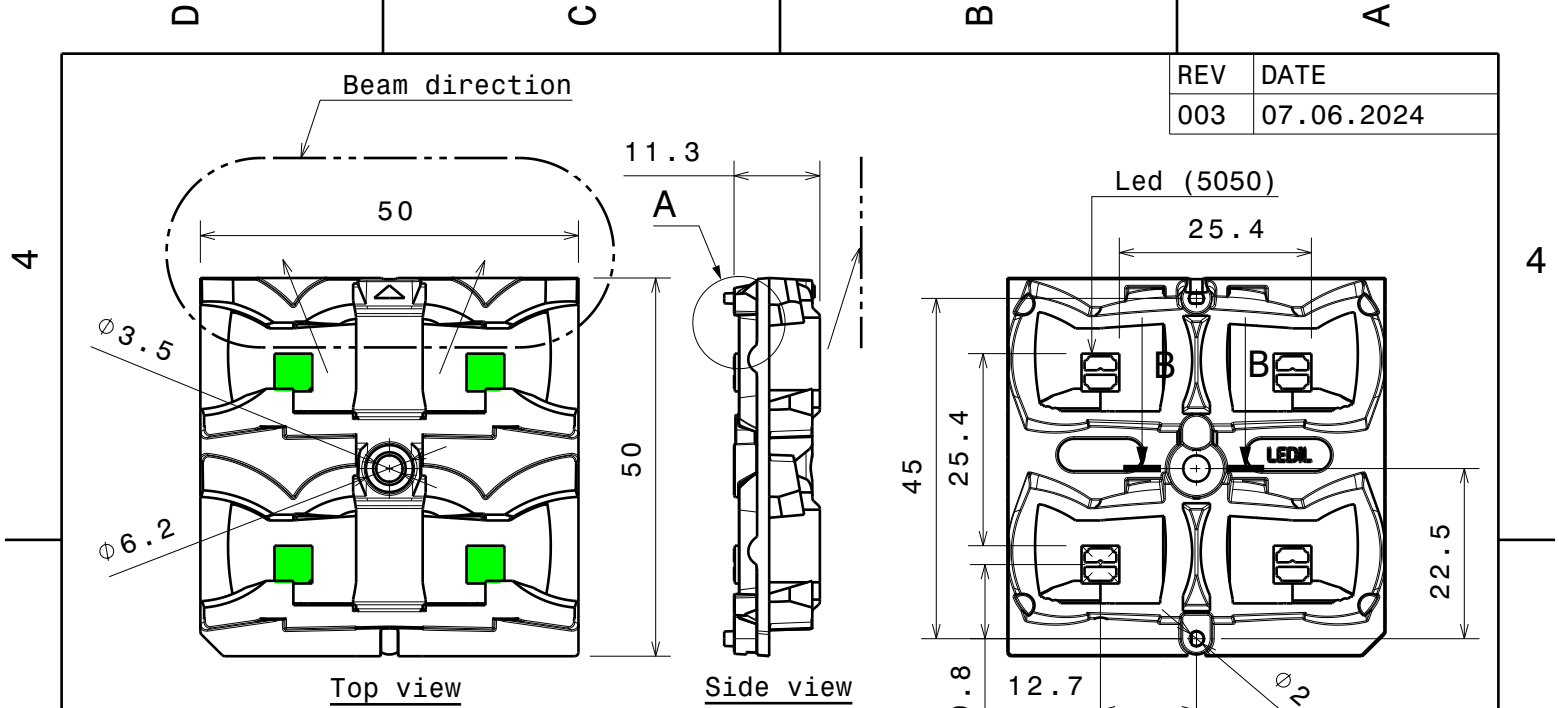


REV	DATE
003	07.06.2024



See www.ledil.com/support for more installation detail

PART	TYPE	MATERIAL	COLOR / COATING
C19761_STRADA-2x2-5050-T2-R_007_Mechmodel_003	Reflector	PC	Metal

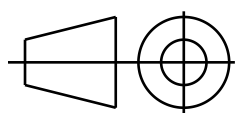
MECHANICAL DRAWING

PRODUCT
Strada



Plastic moulding general tolerances according to DIN 16901-130 and applies if not otherwise shown in the drawing. Silicone moulding general tolerances according to ISO 3302-1 Class M3 and applies if not otherwise shown in the drawing.

FIRST ANGLE PROJECTION:



This drawing is the property of LEDiL Oy. It may not be copied or otherwise distributed without prior written permission from LEDiL Oy.

SCALE	1:1	WEIGHT	-	A4	SHEET 1/1
-------	-----	--------	---	----	-----------

