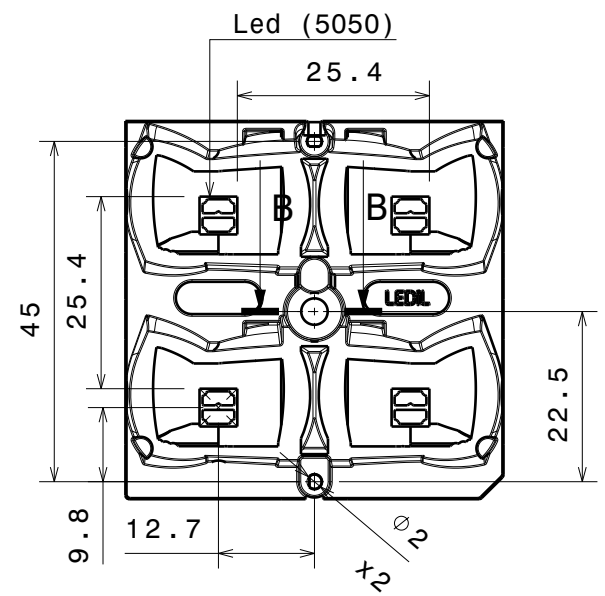
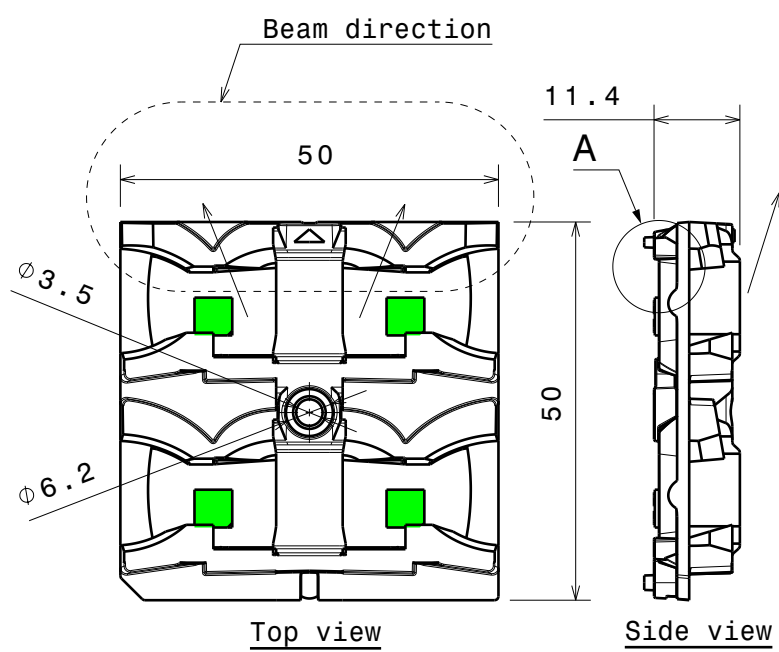


REV	DATE
004	10.02.2025

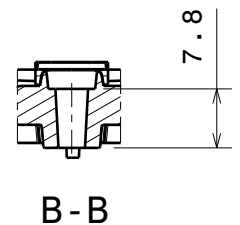
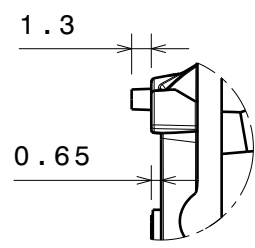
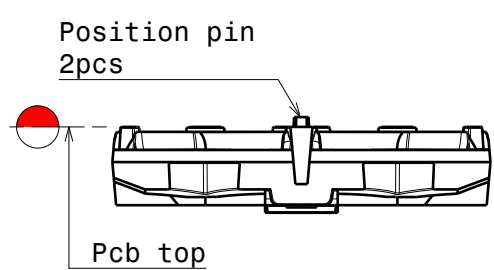
D C B A

4



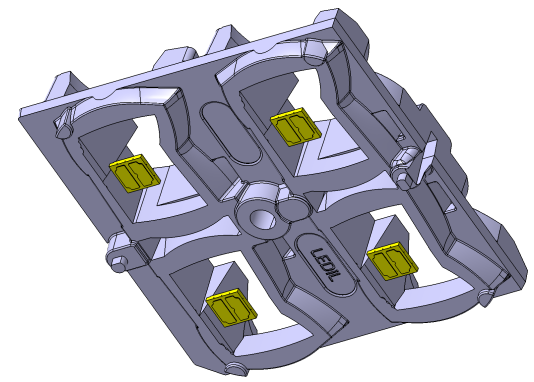
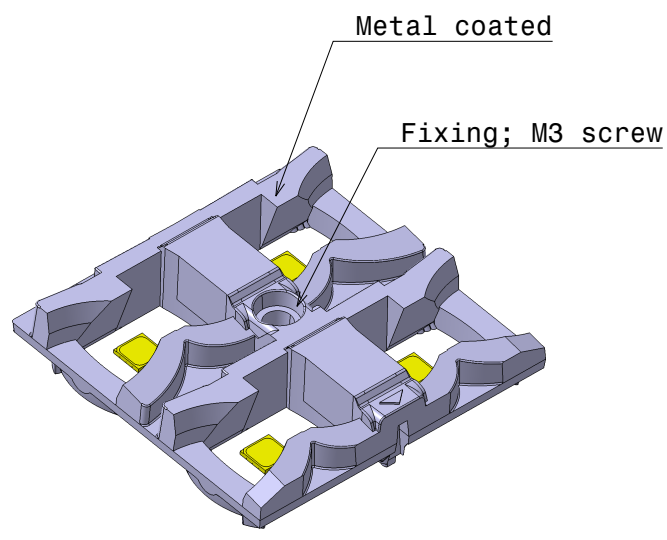
4

3



3

2



2

See www.ledil.com/support for more installation detail

PART	TYPE	MATERIAL	COLOR / COATING
C19761_STRADA-2X2R-T2	Reflector	PC	Metal

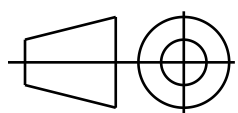
MECHANICAL DRAWING

PRODUCT
STRADA

LEDiL

Plastic moulding general tolerances according to DIN 16901-130 and applies if not otherwise shown in the drawing. Silicone moulding general tolerances according to ISO 3302-1 Class M3 and applies if not otherwise shown in the drawing.

FIRST ANGLE PROJECTION:



This drawing is the property of LEDiL Oy. It may not be copied or otherwise distributed without prior written permission from LEDiL Oy.

1

SCALE 1:1

WEIGHT -

A4 SHEET 1/1

1

D A