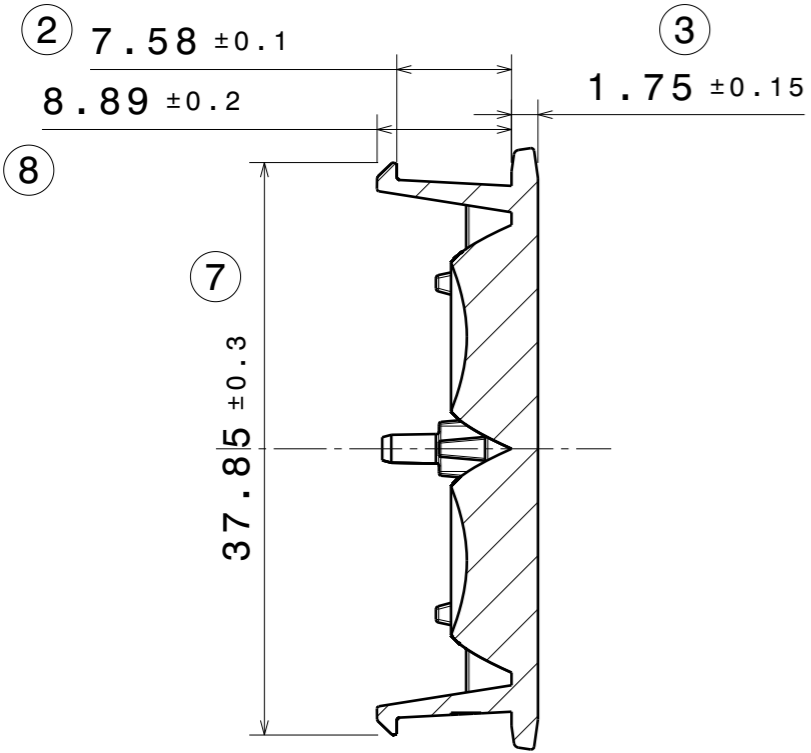
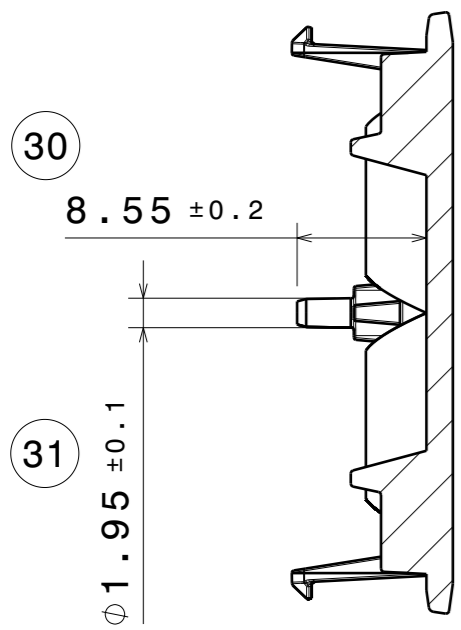
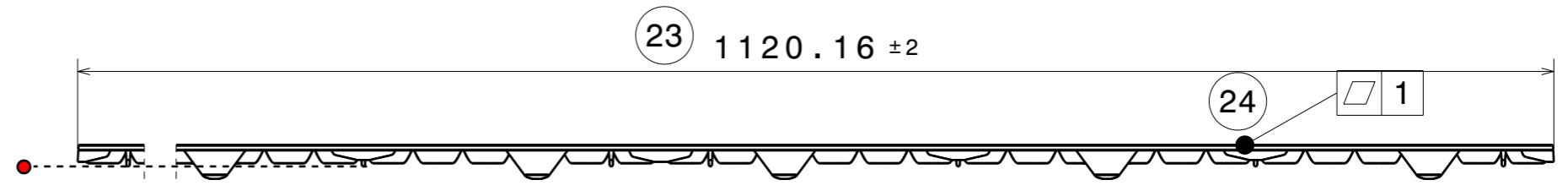
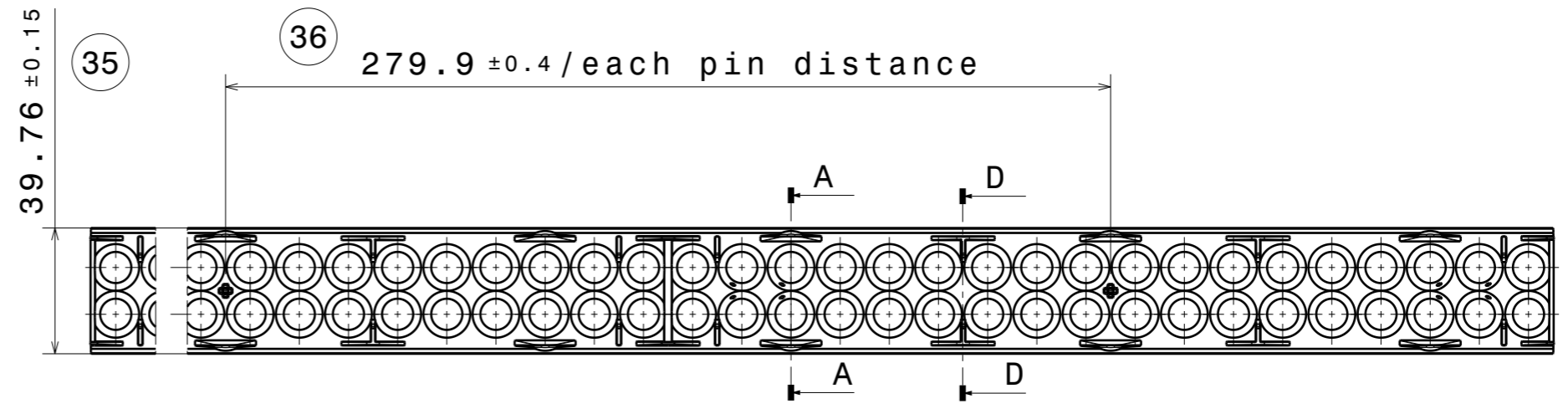


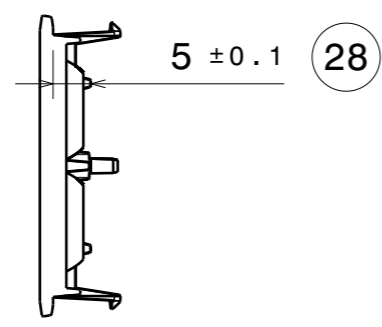
REV	DATE
001	26.06.2024



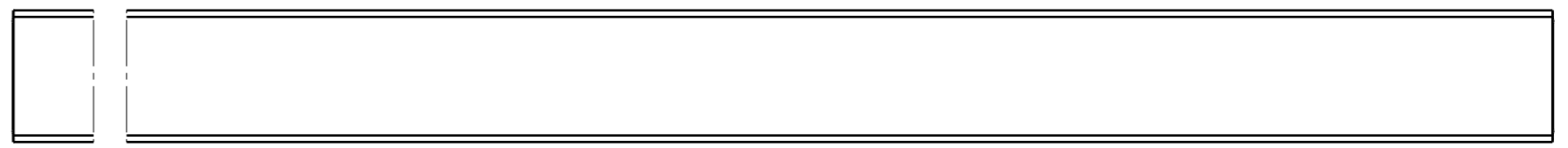
Section view A-A  
Scale: 2:1



Section view D-D  
Scale: 2:1



Auxiliary view C  
Scale: 1:1



PART	TYPE	COUNT	MATERIAL	COLOR / COATING
C19480_LIANNA-2R-30-L4_001_MechanicalModel_001	LENS	1	PMMA	CLEAR

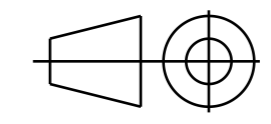
**MECHANICAL DRAWING**

PRODUCT  
**LIANNA**



Plastic moulding general tolerances according to DIN 16901-130 and applies if not otherwise shown in the drawing. Silicone moulding general tolerances according to ISO 3302-1 Class M3 and applies if not otherwise shown in the drawing.

FIRST ANGLE PROJECTION:



This drawing is the property of LEDiL Oy. It may not be copied or otherwise distributed without prior written permission from LEDiL Oy.

SCALE 1:2	WEIGHT 162 g	A3 SHEET 1/1
-----------	--------------	--------------

**Notes**

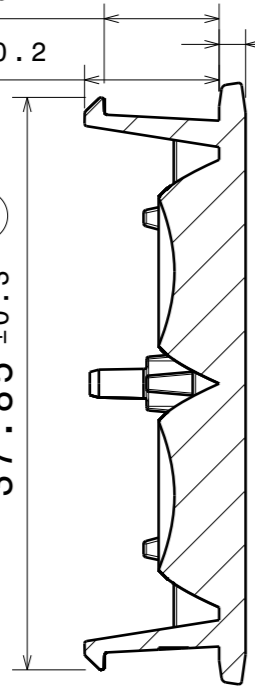
●	PCB or heatsink level.
●	LED location
	Ensure LED fitting from a product specific 3D model available from <a href="http://www.ledil.com">www.ledil.com</a>
	For more details about installation please see LEDiL Installation Guide on <a href="http://www.ledil.com">www.ledil.com</a>

REV	DATE
001	26.06.2024

② 7.6 ±0.1  
 8.9 ±0.2

③ 1.75 ±0.15

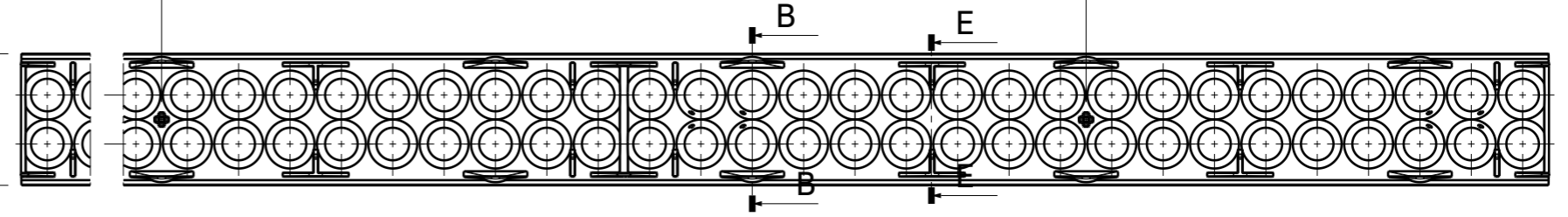
⑦ 37.85 ±0.3



Section view B-B  
 Scale: 2:1

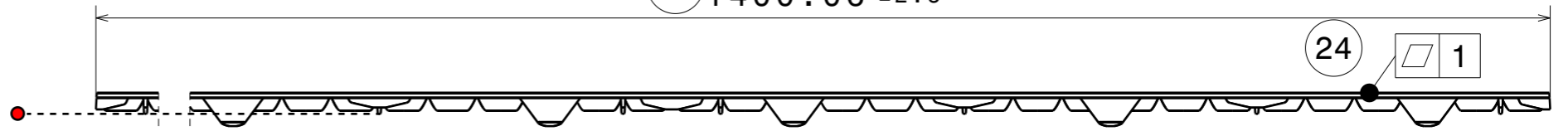
③⑤ 39.76 ±0.15

③⑥ 279.9 ±0.4 /each pin distance



②③ 1400.06 ±2.5

②④ 1

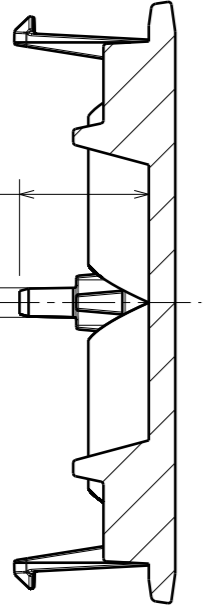


A

③⑩

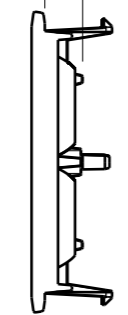
8.55 ±0.2

③① 1.95 ±0.1



Section view E-E  
 Scale: 2:1

②⑧ 5 ±0.1



Auxiliary view F  
 Scale: 1:1

**Notes**

- PCB or heatsink level.
- LED location
- Ensure LED fitting from a product specific 3D model available from [www.ledil.com](http://www.ledil.com)
- For more details about installation please see LEDiL Installation Guide on [www.ledil.com](http://www.ledil.com)

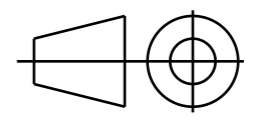
PART	TYPE	COUNT	MATERIAL	COLOR / COATING
C19481_LIANNA-2R-30-L5_001_MechanicalModel_001	LENS	1	PMMA	CLEAR

**MECHANICAL DRAWING**

PRODUCT **LIANNA**

Plastic moulding general tolerances according to DIN 16901-130 and applies if not otherwise shown in the drawing. Silicone moulding general tolerances according to ISO 3302-1 Class M3 and applies if not otherwise shown in the drawing.

FIRST ANGLE PROJECTION:



SCALE 1:2

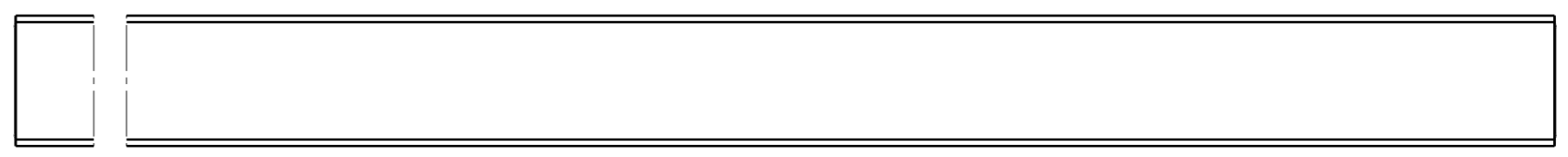
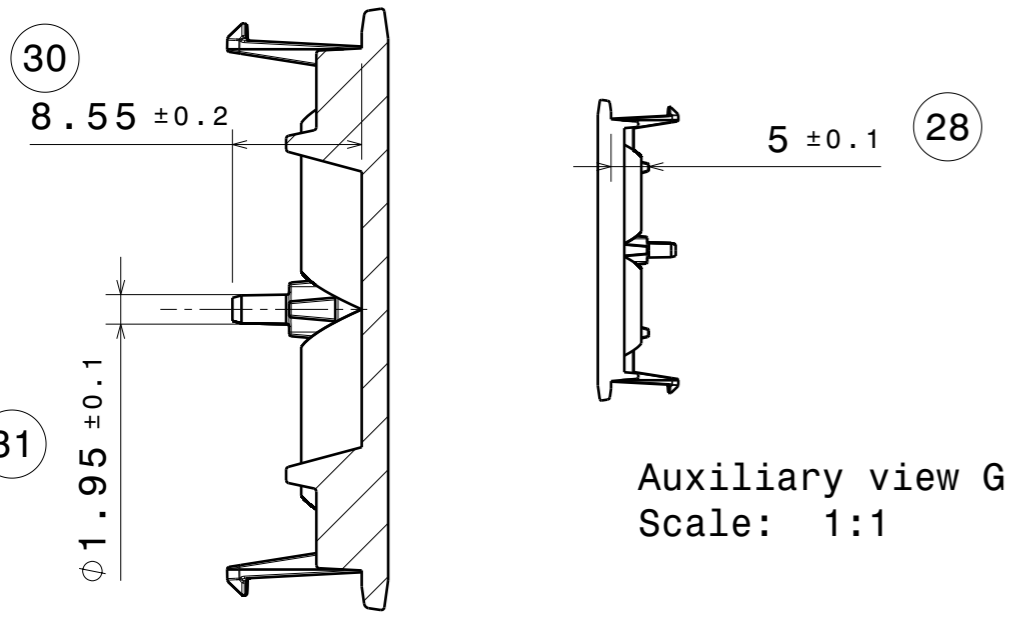
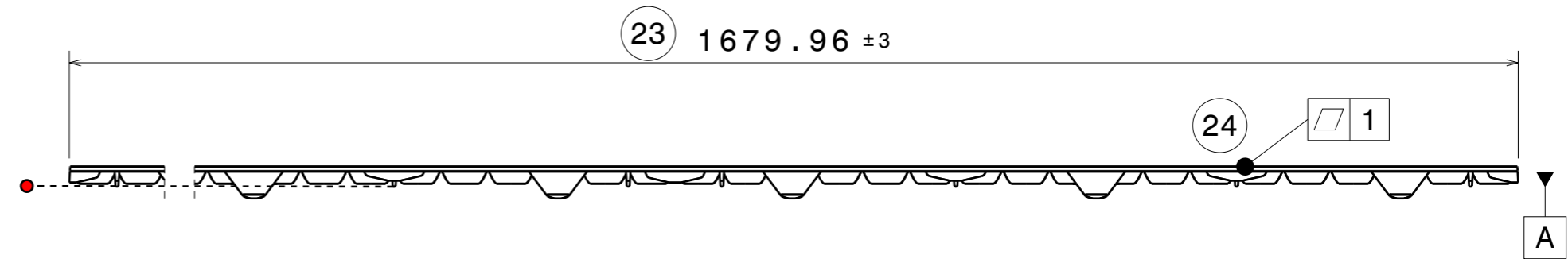
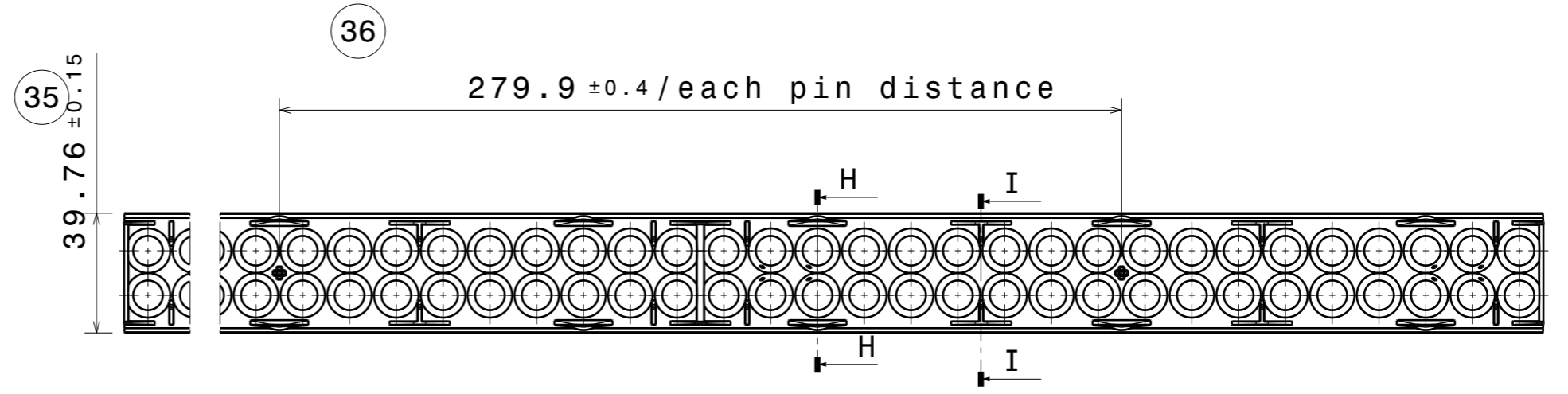
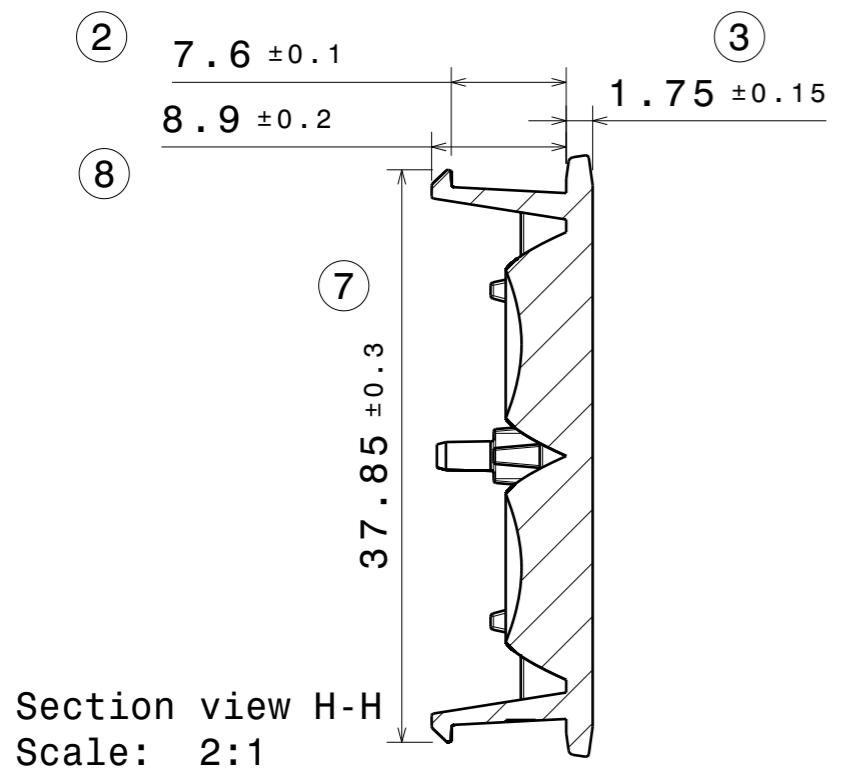
WEIGHT 202 g

**LEDiL**

This drawing is the property of LEDiL Oy. It may not be copied or otherwise distributed without prior written permission from LEDiL Oy.

A3 SHEET 1/1

REV	DATE
001	26.06.2024



Section view I-I  
Scale: 2:1

**Notes**

●	PCB or heatsink level.
●	LED location
	Ensure LED fitting from a product specific 3D model available from <a href="http://www.ledil.com">www.ledil.com</a>
	For more details about installation please see LEDiL Installation Guide on <a href="http://www.ledil.com">www.ledil.com</a>

PART	TYPE	COUNT	MATERIAL	COLOR / COATING
C19482_LIANNA-2R-30-L6_001_MechanicalModel_001	LENS	1	PMMA	CLEAR

<b>MECHANICAL DRAWING</b>	
PRODUCT <b>LIANNA</b>	
Plastic moulding general tolerances according to DIN 16901-130 and applies if not otherwise shown in the drawing. Silicone moulding general tolerances according to ISO 3302-1 Class M3 and applies if not otherwise shown in the drawing.	FIRST ANGLE PROJECTION: 
SCALE 1:1	WEIGHT 243 g

**LEDiL**

This drawing is the property of LEDiL Oy. It may not be copied or otherwise distributed without prior written permission from LEDiL Oy.

A3 SHEET 1/1