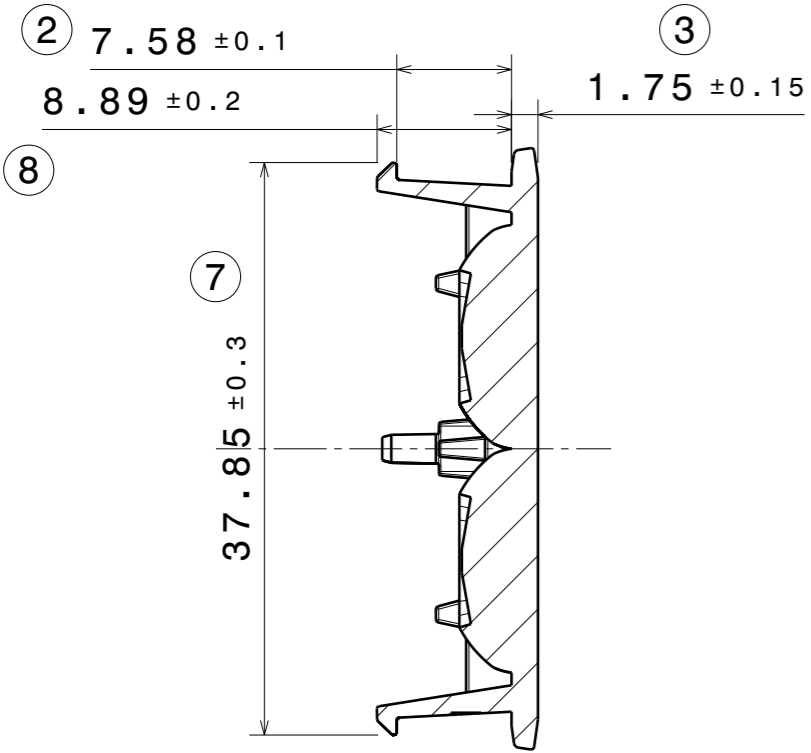
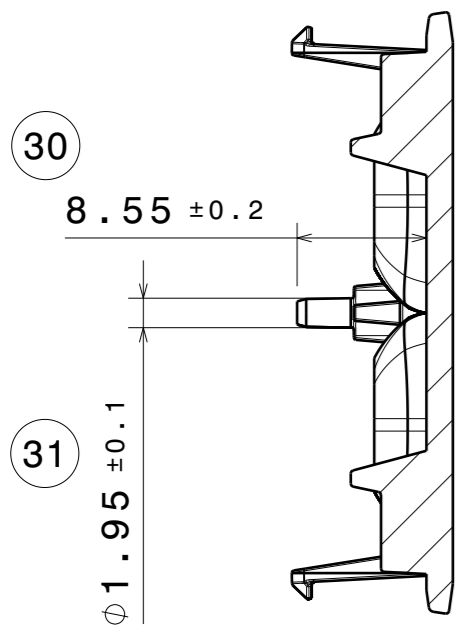
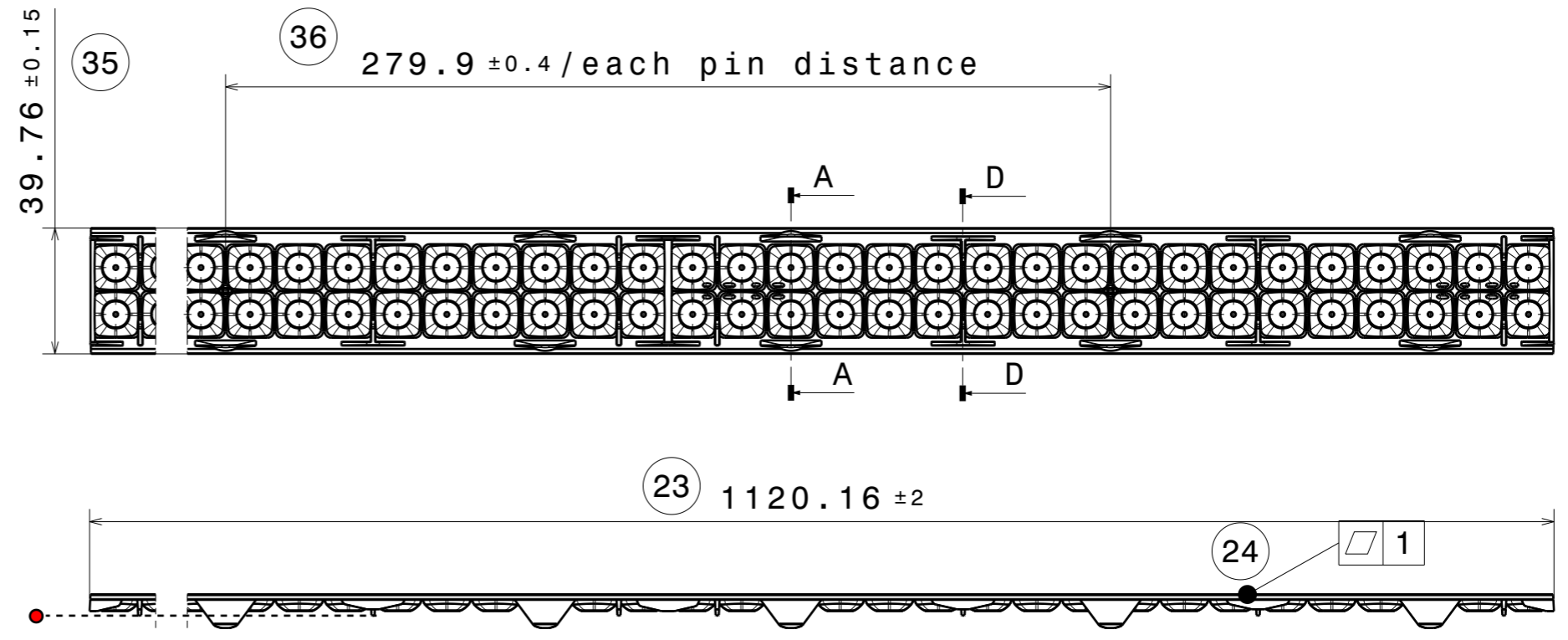


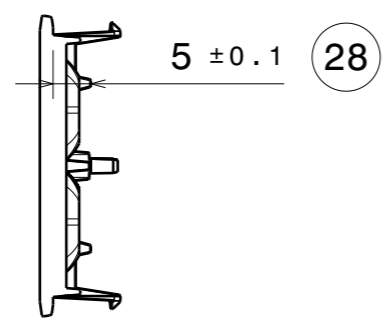
REV	DATE
002	06.06.2024



Section view A-A  
Scale: 2:1



Section view D-D  
Scale: 2:1



Auxiliary view C  
Scale: 1:1



C19468  
COMPONENTS

PART	TYPE	COUNT	MATERIAL	COLOR / COATING
C19468_LIANNA-2R-90-L4_002_MechanicalModel_001		1	PMMA	

<b>MECHANICAL DRAWING</b>	
PRODUCT <b>LIANNA</b>	
Plastic moulding general tolerances according to DIN 16901-130 and applies if not otherwise shown in the drawing. Silicone moulding general tolerances according to ISO 3302-1 Class M3 and applies if not otherwise shown in the drawing.	FIRST ANGLE PROJECTION: 
SCALE 1:2	WEIGHT 176 g

**LEDiL**

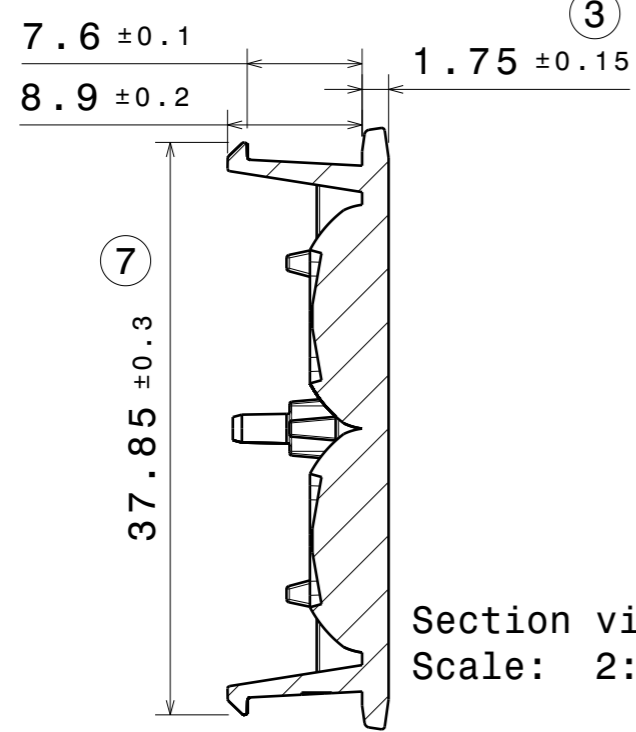
This drawing is the property of LEDiL Oy. It may not be copied or otherwise distributed without prior written permission from LEDiL Oy.

A3 SHEET 1/1

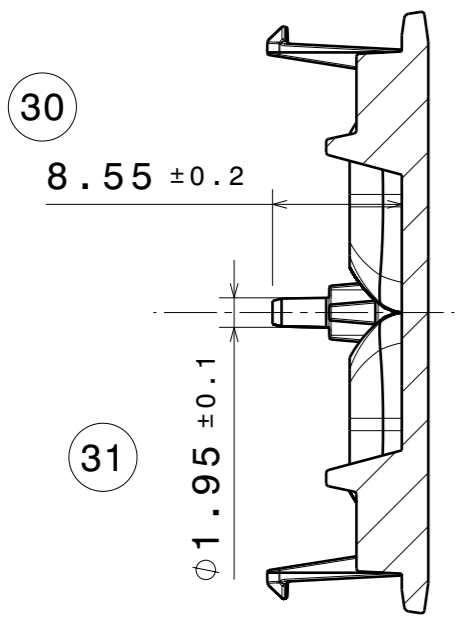
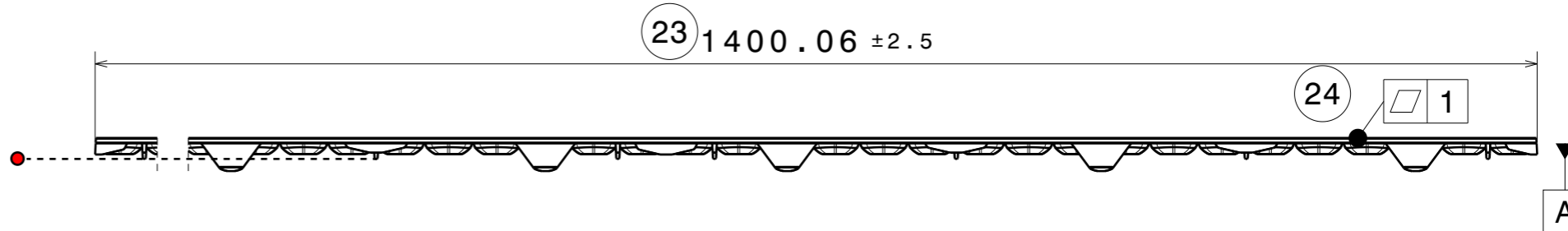
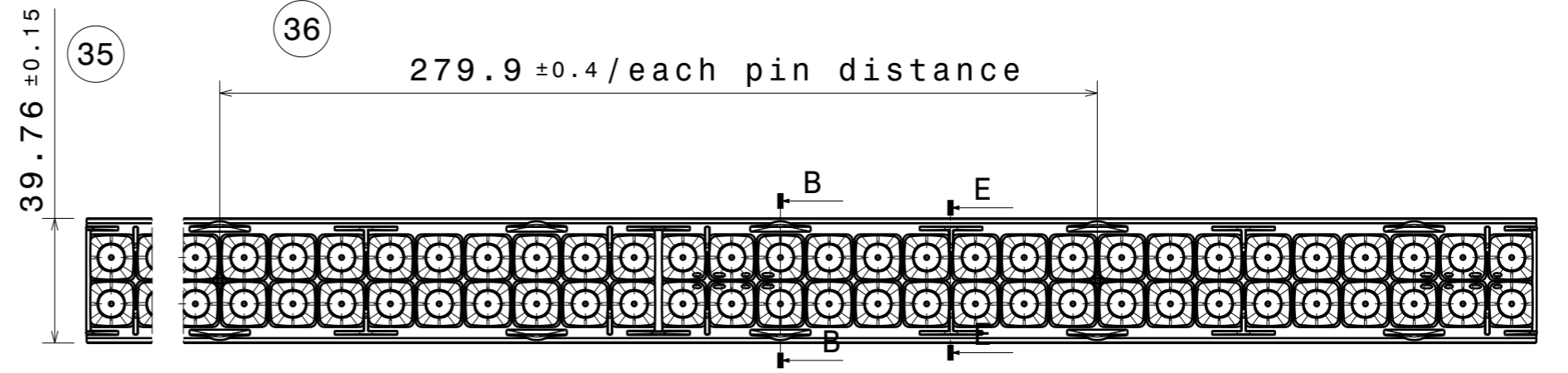
**Notes**

	PCB or heatsink level.
	LED location
	Ensure LED fitting from a product specific 3D model available from <a href="http://www.ledil.com">www.ledil.com</a>
	For more details about installation please see LEDiL Installation Guide on <a href="http://www.ledil.com">www.ledil.com</a>

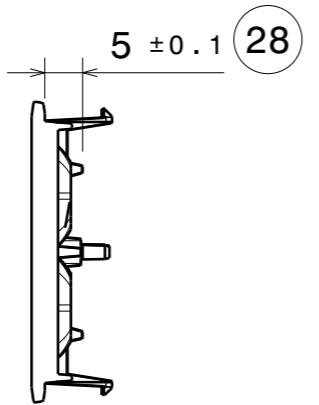
REV	DATE
001	06.06.2024



Section view B-B  
Scale: 2:1



Section view E-E  
Scale: 2:1



Auxiliary view F  
Scale: 1:1

C19710  
COMPONENTS

PART	TYPE	COUNT	MATERIAL	COLOR / COATING
C19710_LIANNA-2R-90-L5_002_MechanicalModel_001		1	PMMA	

<b>MECHANICAL DRAWING</b>	
PRODUCT <b>LIANNA</b>	
Plastic moulding general tolerances according to DIN 16901-130 and applies if not otherwise shown in the drawing. Silicone moulding general tolerances according to ISO 3302-1 Class M3 and applies if not otherwise shown in the drawing.	FIRST ANGLE PROJECTION: 
SCALE 1:2	WEIGHT 220 g

**LEDiL**

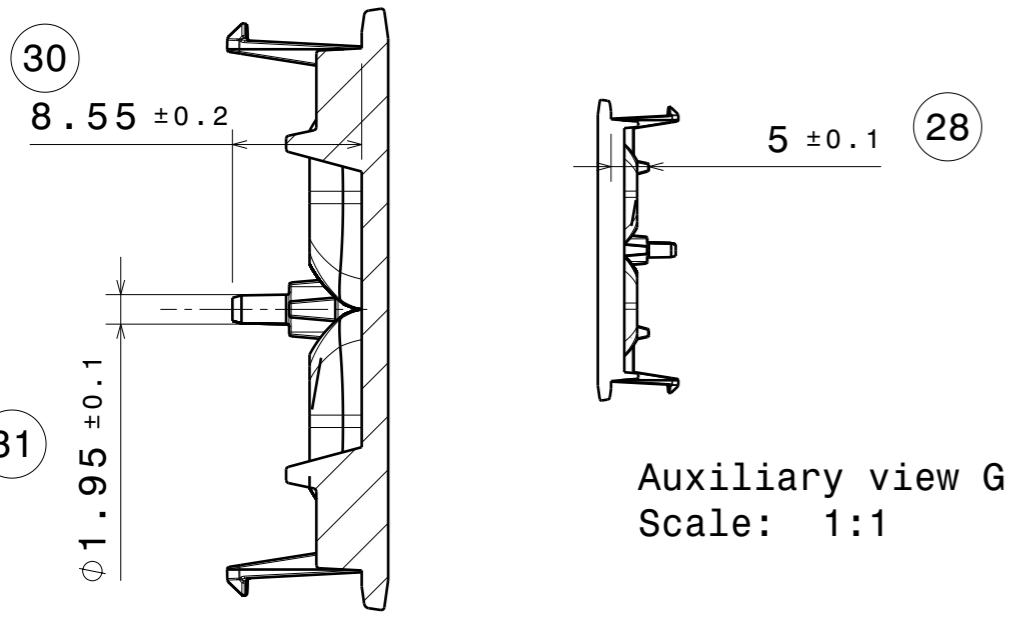
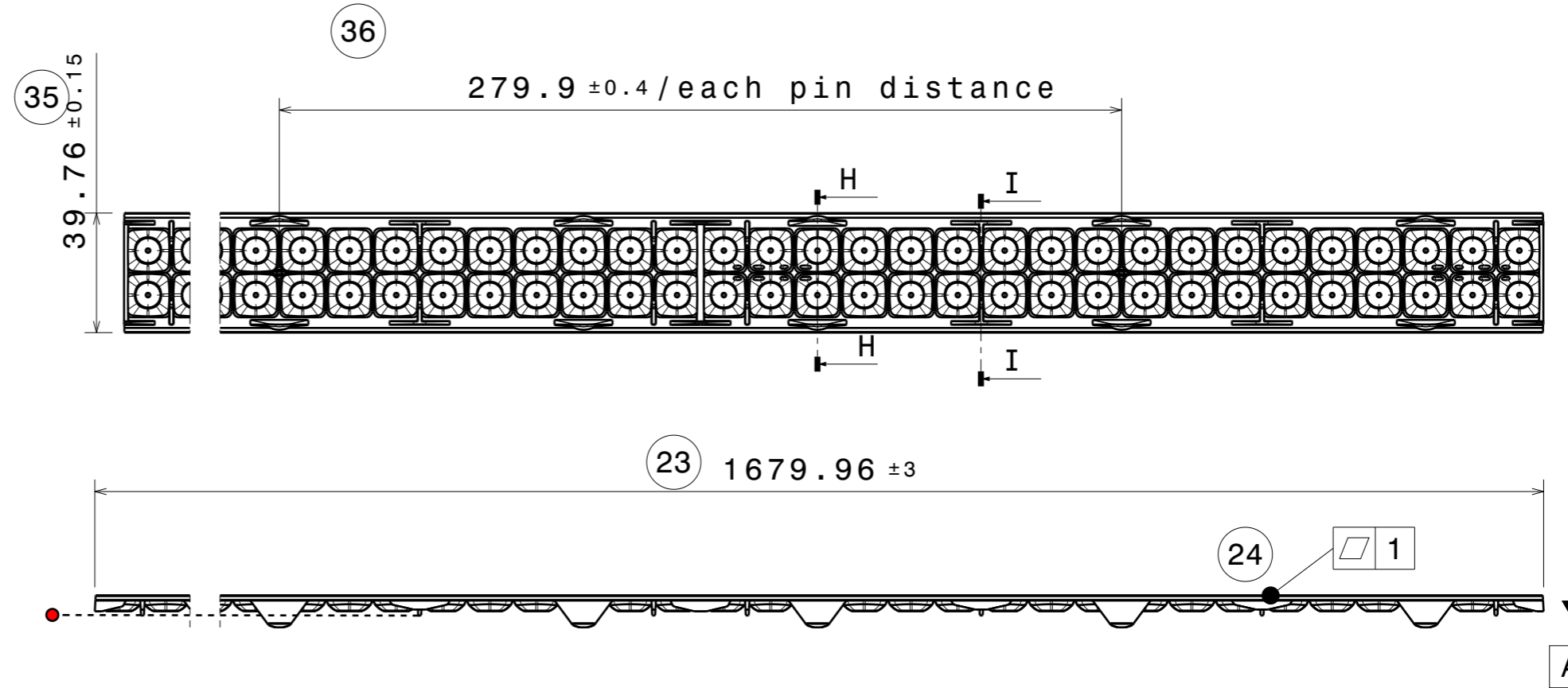
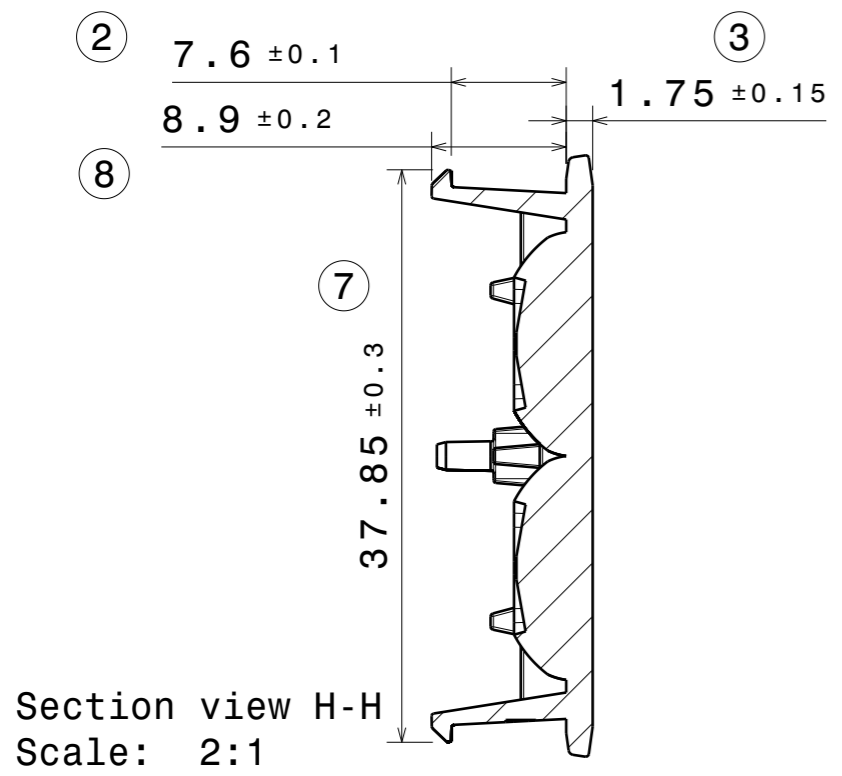
This drawing is the property of LEDiL Oy. It may not be copied or otherwise distributed without prior written permission from LEDiL Oy.

A3 SHEET 1/1

**Notes**

	PCB or heatsink level.
	LED location
	Ensure LED fitting from a product specific 3D model available from <a href="http://www.ledil.com">www.ledil.com</a>
	For more details about installation please see LEDiL Installation Guide on <a href="http://www.ledil.com">www.ledil.com</a>

REV	DATE
001	06.06.2024



**C19469 COMPONENTS**

PART	TYPE	COUNT	MATERIAL	COLOR / COATING
C19469_LIANNA-2R-90-L6_002_MechanicalModel_001		1	PMMA	

<b>MECHANICAL DRAWING</b>	
PRODUCT <b>LIANNA</b>	
Plastic moulding general tolerances according to DIN 16901-130 and applies if not otherwise shown in the drawing. Silicone moulding general tolerances according to ISO 3302-1 Class M3 and applies if not otherwise shown in the drawing.	FIRST ANGLE PROJECTION: 
SCALE 1:1	WEIGHT 264 g

**LEDiL**

This drawing is the property of LEDiL Oy. It may not be copied or otherwise distributed without prior written permission from LEDiL Oy.

A3 SHEET 1/1

**Notes**

	PCB or heatsink level.
	LED location
	Ensure LED fitting from a product specific 3D model available from <a href="http://www.ledil.com">www.ledil.com</a>
	For more details about installation please see LEDiL Installation Guide on <a href="http://www.ledil.com">www.ledil.com</a>