

# LEDiL



## RANGE & PRECISION – LEDiL's standard LED optics offer both

LEDiL is a Finnish manufacturer and supplier of top quality LED secondary optics. We are driven by an innovative 'can do, will do' attitude and willing to run that 'extra mile' to bring to our customers the finest solutions that add real value to their end products. Whether they need reflectors or lenses, asymmetric or symmetric.

Application support

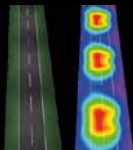
Custom solutions

Symmetric

Asymmetric

Reflectors

Arrays



## Dear Customer

We have updated our catalogue to answer better to your needs in our standard optics. Please note that you can find ordering codes for products together with the latest product information on our website at:

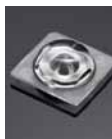
[www.ledil.com](http://www.ledil.com)

FWHM, efficiency and other values in this catalogue *are typical values* and subject to chosen LED/optic -combination. Actual values can be found on our website.

We have included saved search paths for your convenience. URL to the saved search can be found under each product family name. This address will take you directly to the family listing.

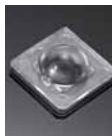
## SIRI-A

[www.ledil.com/siri](http://www.ledil.com/siri)



### SIRI-A

PMMA  
H: 13,9 mm  
D: 4,2 mm  
Beam type:  
Wide area lighting



### SIRI-DIFF

PMMA  
H: 13,9 mm  
D: 4,9 mm



### SIRI-DOME

PMMA  
H: 13,9 mm  
D: 4,9 mm  
LED cover with no effect on the light

## JULIA-A

[www.ledil.com/julia](http://www.ledil.com/julia)



### JULIA-A

PMMA  
H: 4,8 mm  
D: 18,8 mm  
Beam type:  
Wide area lighting

## LARISA

[www.ledil.com/larisa](http://www.ledil.com/larisa)



### LARISA-M

PMMA / Black PC  
H: 7,5 mm  
D: 9,9 x 9,9 mm  
Beam type: Medium



### LARISA-W

PMMA / Black PC  
H: 7,5 mm  
D: 9,9 x 9,9 mm  
Beam type: Wide



### LARISA-O

PMMA / Black PC  
H: 7,5 mm  
D: 9,9 x 9,9 mm  
Beam type: Oval

Code	Typ. FWHM	Typ. Eff.	Typ. cd/lm
LARISA-M	32	86	2,2
LARISA-O	40 x 22	81	2,1
LARISA-RS	19	80	3,7
LARISA-W	48	85	1,2

## LISA2

[www.ledil.com/lisa2](http://www.ledil.com/lisa2)



### LISA2-RS-PIN

PMMA / Black PC  
H: ≈6,6 mm  
D: 9,9 mm  
Beam type: Real spot



### LISA2-R-PIN

Hyper Reflective white PC  
H: ≈6,6 mm  
D: 9,9 mm  
Beam type: Extra<sup>2</sup> wide

Code	Typ. FWHM	Typ. eff.	Typ. cd/lm
LISA2-M	22	89	2,8
LISA2-O	45 x 21	82	2,2
LISA2-O-90	19 x 48	82	2,2
LISA2-RS	19	89	3,1
LISA2-W	34	88	1,8
LISA2-WW	46	89	1,1
LISA2-WWW	80	83	0,4

FWHM angles, efficiencies and cd/lm values contained herein are average values. Actual measured values depend of the specific LED/optic combination. Go to [www.ledil.com](http://www.ledil.com) for the LED specific values and optic datasheets.

# Single lenses

## CRYSTAL

[www.ledil.com/crystal](http://www.ledil.com/crystal)

- 3° beam and even over 110cd/lm peak values can be achieved. Which is 170 times more intense peak than with an LED alone.
- No dark or bright spots, No halos
- Optical efficiency of up to 92%



### CRYSTAL-MINE

PMMA  
H: 27,4 mm  
D: 46,8 mm  
Beam type: Spot

**NEW!**



### CRYSTAL-RS

PMMA  
H: 27,4 mm  
D: 46,8 mm  
Beam type: Real spot  
FWHM (sim.): 4°

## TINA

[www.ledil.com/tina](http://www.ledil.com/tina)

Code	Typ. FWHM	Typ. eff.	Typ. cd/lm
TINA-D	16	92	6,1
TINA-M	29	88	2,1
TINA-O	34 x 15	89	3,4
TINA-RS	13	93	10,9
TINA-W	48	91	1,3
TINA-WW	61	91	0,8

## TINA2

[www.ledil.com/tina2](http://www.ledil.com/tina2)

**NEW!**



### TINA2-R-CLIP16

Hyper Reflective white PC  
H: 10,1 mm  
D: 16,1 mm  
Beam type: Wide

Code	Typ. FWHM	Typ. eff.	Typ. cd/lm
TINA2-D	16	89	6,9
TINA2-M	29	86	2,5
TINA2-O	35 x 16	87	3,5
TINA2-RS	14	91	10,4
TINA2-W	46	87	1,37
TINA2-WW	58	87	0,9
TINA2-R	TBA	TBA	TBA



### TINA2-SS

PMMA / PC  
H: ≈10 mm  
D: 16,1 mm  
Beam type: Smooth spot



### TINA2-M

PMMA / PC  
H: ≈10 mm  
D: 16,1 mm  
Beam type: Medium

## TINA3

[www.ledil.com/tina3](http://www.ledil.com/tina3)



### TINA3-S

PMMA / White PC  
H: 11,5 mm  
D: 16,1 mm  
Beam type: Spot

Code	Typ. FWHM	Typ. eff.	Typ. cd/lm
TINA3-00	59 x 39	90	1,20
TINA3-S	13	77	8,40
TINA3-W	39	90	1,70
TINA3-WW	53	90	1,00
TINA3-WWW	71	88	0,60



### TINA3-W

PMMA / White PC  
H: ≈7 mm  
D: 16,1 mm  
Beam type: Wide

The information contained herein is the property of LEDIL Oy, Satorankatu 10, FI-24240 SALO, Finland and is subject to change without prior notice. Please visit [www.ledil.com](http://www.ledil.com) for additional information, such as the latest photometric files, 3D mechanical models, and application notes relating to handling, gluing and taping.

### HEIDI

[www.ledil.com/heidi](http://www.ledil.com/heidi)

**NEW!**



**HEIDI-WR**

PMMA, H: 11,7 mm, D: 21,6 mm  
Beam type: Oval-90

Code	Typ. FWHM	Typ. eff.	Typ. cd/lm
HEIDI-D	10	90	14,8
HEIDI-M	26	89	3,8
HEIDI-O	49 x 11	87	4,5
HEIDI-O-90	13 x 44	87	4,7
HEIDI-RS	8	92	21,8
HEIDI-SS	15	90	6,8
HEIDI-W	32	87	2,6
HEIDI-W2	45	80	1,1
HEIDI-WR	31	TBA	TBA



**HEIDI-W2**

PMMA  
H: 11,7 mm  
D: 21,6 mm  
Beam type: Wide



**HEIDI-O**

PMMA  
H: 11,7 mm  
D: 21,6 mm  
Beam type: Oval

### TWIDDLE

[www.ledil.com/twiddle](http://www.ledil.com/twiddle)



**TWIDDLE-D**

PMMA  
H: 14,3 mm  
D: 21,6 mm  
Beam type: Diffused spot



**TWIDDLE-M**

PMMA  
H: 13,2 mm  
D: 21,6 mm  
Beam type: Medium

### ROSE

[www.ledil.com/rose](http://www.ledil.com/rose)



**ROSE Smooth spot**

Material: PC / PC  
H: 13 mm  
D: 21,6 x 21,6 mm



**ROSE Medium**

Material: PC / PC  
H: 15,6 mm  
D: 21,6 x 21,6 mm



**ROSE Extra wide**

Material: PC / PC  
H: 13,5 mm  
D: 21,6 x 21,6 mm

Beam type code	Typ. FWHM	Typ. eff.	Typ. cd/lm
-D	16	85	7,1
-M	30	83	2,5
-MD	24	TBA	TBA
-O	43 x 15	81	3,1
-O-90	13 x 44	81	3,6
-RS	11	88	21,7
-SS	15	87	9,37
-W	51	81	1,1
-WWW	80	TBA	TBA

### ROSE for UV lighting

NCSU033A

Special products made of COP, material with extreme UV-withstanding suitable for various UV-lighting applications.



FA10857\_NIS033U-RS  
FA10911\_NIS033U-SS  
FA10912\_NIS033U-M  
FA10913\_NIS033U-W

NCSU033A UV-LED  
Material: COP / PC  
H: 14,2 mm  
D: 21,6 x 21,6 mm

FWHM angles, efficiencies and cd/lm values contained herein are average values. Actual measured values depend of the specific LED/optic combination. Go to [www.ledil.com](http://www.ledil.com) for the LED specific values and optic datasheets.

## LAURA

[www.ledil.com/laura](http://www.ledil.com/laura)



**LAURA-RS**  
PMMA / PC  
H: ≈13 mm  
D: 21,6 x 21,6 mm  
Beam type: Real spot



**LAURA-R-XW**  
Hyper Reflective  
PC / PC  
H: ≈13 mm  
D: 21,6 x 21,6 mm  
Beam type:  
Extra<sup>2</sup> wide



**LAURA-O-WAS**  
PMMA / PC  
H: ≈13 mm  
D: 21,6 x 21,6 mm  
Beam type: Wall  
washer

Code	Typ. FWHM	Typ. eff.	Typ. cd/lm
LAURA-D	15	88	6,2
LAURA-M	29	88	2,5
LAURA-O	40 x 12	88	4,3
LAURA-RS	8	93	30,5
LAURA-SS	11	91	14,5
LAURA-W	42	88	1,7
LAURA-WW	64	86	0,74
LAURA-XW	72	85	0,6
LAURA-R-W	70	77	0,52

**LAURA-SS-WAS →**

PMMA / PC  
H: ≈13 mm  
D: 21,6 x 21,6 mm  
Beam type: Wall washer

**NEW!**



## LEILA

[www.ledil.com/leila](http://www.ledil.com/leila)



**LEILA-RS**  
PMMA / PC  
H: ≈14 mm  
D: 21,6 mm  
Beam type: Real spot



**LEILA-M**  
PMMA / PC  
H: ≈13 mm  
D: 21,6 mm  
Beam type: Medium

**LEILA-R-CLIP16**

Hyper reflective PC  
H: 13 mm  
D: 21,6 mm  
Typ. FWHM: 73°  
Typ. efficiency: 90%  
Beam type: Extra<sup>2</sup> Wide

**NEW!**



Beam type code	Typ. FWHM	Typ. eff.	Typ. cd/lm
-MD	24	90	TBA
-O	39 x 11	88	4,8
-O-90	11 x 39	89	4,6
-REC	37 x 26	84	2,4
-RS	9,6	94	23,1
-RS2	8,5	90	22,1
-SS	12	COP	
-W	42	90	1,6
-WW	42	TBA	TBA

## IRIS

[www.ledil.com/iris](http://www.ledil.com/iris)



**IRIS-O**  
PMMA / PC  
H: ≈29 mm  
D: 38 mm  
Beam type: Oval



**IRIS**  
PMMA / PC  
H: ≈28 mm  
D: 38 mm  
Beam type: Spot



**IRIS-M**  
PMMA / PC  
H: ≈29 mm  
D: 38 mm  
Beam type: Medium

Code	Typ. FWHM	Typ. eff.	Typ. cd/lm
IRIS-M	26	86	2,7
IRIS-O	39 x 28	84	1,9
IRIS-RS	5	93	6,6
IRIS-RS2	9	91	19,2
IRIS-S	13	89	10,9

The information contained herein is the property of LEDIL Oy, Satorankatu 10, FI-24240 SALO, Finland and is subject to change without prior notice. Please visit [www.ledil.com](http://www.ledil.com) for additional information, such as the latest photometric files, 3D mechanical models, and application notes relating to handling, gluing and taping.

## FLARE

[www.ledil.com/flarefamily](http://www.ledil.com/flarefamily)**FLARE-MINI-A**

PMMA  
H: 8,6 mm  
D: 16 mm  
Beam type: Oval

**FLARE-C**

PMMA  
H: 14,6 mm  
D: 24,5 x 24,5 mm  
Beam type: Rectangular

**FLARE-MAXI-D**

PMMA  
H: 16,7 mm  
D: 33,9 x 33,9 mm  
Beam type: Rectangular

Code	Typ. FWHM	Typ. eff.	Typ. cd/lm
FLARE-B	102 x 11	93	1,6
FLARE-C	87 x 8	93	3,2
FLARE-C-D	95 x 21	93	1
FLARE-MAXI	99 x 13	94	2,3
FLARE-MAXI-D	108 x 15	94	1,8
FLARE-MINI-A	106 x 20	94	1,1
FLARE-MINI-AD	98 x 19	94	1,1
FLARE-MINI-AD-PIN	98 x 19	94	1,1
FLARE-MINI-A-PIN	106 x 20	94	1
LEDIL-FLARE	138 x 20	92	1,3

**FLARE-MAXI**

PMMA  
H: 16,7 mm  
D: 33,9 x 33,9 mm  
Beam type: Rectangular

**FLARE-MINI-AD**

PMMA  
H: 8,6 mm  
D: 16 mm  
Beam type: Oval

## STRADA-S

[www.ledil.com/products](http://www.ledil.com/products)**STRADA-S**

PMMA  
H: 6,9 mm  
D: 19,6 x 15,5 mm  
Beam type: Side emitter

**STRADA-S-14**

PMMA  
H: 6,5 mm  
D: 19,6 x 13,8 mm  
Beam type: Side emitter

## EMILY

[www.ledil.com/emily](http://www.ledil.com/emily)**EMILY-O-WAS**

PMMA, H: 14,8 mm, D: 26 mm  
Beam type: Tilted oval

Code	Typ. FWHM	Typ. eff.	Typ. cd/lm
EMILY-SS-WAS	8	90	12
EMILY-O-WAS	43 x 10	87	3,6
EMILY-D	11	91	14
EMILY-M	18	91	7,4
EMILY-M2	29	89,2	3,05
EMILY-O	44 x 10	89	4,5
EMILY-O-90	45 x 10	89	4,2
EMILY-SS	11	80	13,4
EMILY-W	39	86	1,5
EMILY-WWW	58	86	1

**EMILY-M**

PMMA  
H: 15,1 mm  
D: 26 mm  
Beam type: Medium

**EMILY-WWW**

PMMA  
H: 13,3 mm  
D: 26 mm  
Beam type: Extra<sup>2</sup> wide

**EMILY-O**

PMMA  
H: 15,1 mm  
D: 26 mm  
Beam type: Oval

## IRINA

[www.ledil.com/irina](http://www.ledil.com/irina)**IRINA-RS**

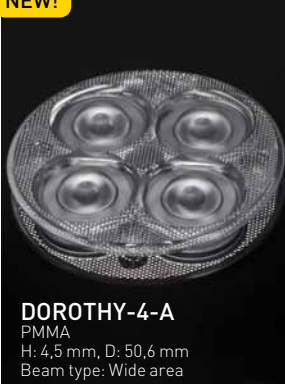
PMMA / PC  
H: 11,7 mm  
D: 24,7 mm  
Beam type: Real spot

FWHM angles, efficiencies and cd/lm values contained herein are average values. Actual measured values depend of the specific LED/optic combination. Go to [www.ledil.com](http://www.ledil.com) for the LED specific values and optic datasheets.

## DOROTHY

[www.ledil.com/dorothy](http://www.ledil.com/dorothy)

**NEW!**



**DOROTHY-4-A**  
PMMA  
H: 4,5 mm, D: 50,6 mm  
Beam type: Wide area

DOROTHY is an array of 4 side-emitting optics. It is designed for wide area lighting applications, especially anti-panic area lights.

## EMMA

[www.ledil.com/products](http://www.ledil.com/products)



**EMMA-A**  
PMMA  
H: 5,7 mm  
D: 9,9 x 9,9 mm  
Beam type: Side emitter

## SOPHIE

[www.ledil.com/products](http://www.ledil.com/products)



**SOPHIE**  
PMMA  
H: 10,4 mm  
D: 150 mm  
Beam type: Asymmetric

## BRIDGET / LILY / CINDY

[www.ledil.com/products](http://www.ledil.com/products)

Code	Typ. FWHM	Typ. eff.	Typ. cd/lm
-M	41	87	1,5
-S	31	89	1,5
-W	57	88	1,1



**-M**  
Metallized PC  
H: 12,8 mm  
D: 22,6 mm  
Beam type: Medium



**-S**  
Metallized PC  
H: 12,8 mm  
D: 22,6 mm  
Beam type: Spot



**REGINA**  
Metallized PC  
H: 15,3 mm  
D: 19 mm  
Beam type: Real spot

## TYRA / TYRA2 / TYRA3

[www.ledil.com/tyra](http://www.ledil.com/tyra)

Code	Typ. FWHM	Typ. cd/lm
-M	32	90
-S	20	89
-W	47	91
-WW	64	90



**TYRA-S**  
Metallized PC  
H: 23,1 mm  
D: 40 mm  
Beam type: Spot



**TYRA3-WW**  
Metallized PC  
H: 22,5 mm  
D: 40 mm  
Beam type: Extra W



One system,  
endless possibilities



## LENA

[www.ledil.com/lenafamily](http://www.ledil.com/lenafamily)

Code	Beam type	Diameter	Height	Typ. FWHM	Typ. Eff.	Typ. cd/lm
LENA-M	M	111	86	22	83	2,5
LENA-M-DL	M	111	87	22	77	3,4
LENA-S	S	111	86	11	85	7,6
LENA-S-DL	S	111	87	14	80	5,6
LENA-SS	SS	111	84,6	18	82	5
LENA-SS-DL	SS	111	87	16	74	5
LENA-W	W	111	85,4	46	82	1,3
LENA-WAS	WAS	111	39,1	Asym	82	1,1
LENA-WAS-DL	WAS	111	41,2	Asym	76	0,86
LENA-W-DL	W	111	87	45	75	1,3
LENA-X-WAS	WAS	111	39,6	Asym	87	
LENA-X-WAS-DL	WAS	111	42	Asym	80	

## LENINA

[www.ledil.com/leninafamily](http://www.ledil.com/leninafamily)

Code	Beam type	Diameter	Height	Typ. FWHM	Typ. Eff.	Typ. cd/lm
LENINA-M	M	74	46	31	87	2,1
LENINA-M-DL	M	74	48	35	80	1,6
LENINA-S	S	74	46	19	88	4,5
LENINA-S-DL	S	74	48	23	81	3,1
LENINA-W	W	74	46	53	87	1,1
LENINA-W-DL	W	74	48	54	80	1
LENINA-XW	XW	74	47	73	89	0,6
LENINA-XW-DL	WWW	74	48,6	68	82	0,6

FWHM angles, efficiencies and cd/lm values contained herein are average values. Actual measured values depend of the specific LED/optic combination. Go to [www.ledil.com](http://www.ledil.com) for the LED specific values and optic datasheets.



## BARBARA

[www.ledil.com/barbara](http://www.ledil.com/barbara)



### BARBARA-XW

Hyper Reflective PC  
H: 44,7 mm  
D: 70 mm  
Beam type: Extra<sup>2</sup>W



### BARBARA-S

Metallized PC  
H: 44,7 mm  
D: 70 mm  
Beam type: Spot

## EMY

[www.ledil.com/emy](http://www.ledil.com/emy)

### EMY-S

D: 50 mm  
H: 14,4 mm  
6 LEDs  
PMMA  
Beam type:  
Smooth spot



## PETUNIA

[www.ledil.com/petuniafamily](http://www.ledil.com/petuniafamily)

### PETUNIA

D: 29,5 x 46,5 mm H: 7,4 mm  
12 LEDs PMMA  
Typ. FWHM: 29°, Typ. eff: 91%



## SANDRA

[www.ledil.com/sandra](http://www.ledil.com/sandra)

SANDRA is largest diameter optical array family LEDiL has. It has many application for example in retrofits, retail lighting and track mounted lighting fixtures.

Name	Beam type	Typ. FWHM	Typ. eff.	Typ. cd/lm
SANDRA-12-M	M	28	88	2,4
SANDRA-12-W	W	31	88	2,4
SANDRA-12-S	S	14	91	13,2

### SANDRA-S

D: 67 mm  
H: 11,1 mm  
12 LEDs  
PMMA  
Beam type: Spot

**NEW!**



### SANDRA-M

D: 67 mm  
H: 11,1 mm  
12 LEDs  
PMMA  
Beam type: Medium



### SANDRA-W

D: 67 mm  
H: 11,1 mm  
12 LEDs  
PMMA  
Beam type: Wide



## SATU

[www.ledil.com/satu](http://www.ledil.com/satu)

## SATU-M

3 LEDs  
PMMA  
H: 8,9 mm  
D: 21,8 mm  
Beam type: Medium



## SATU-O

3 LEDs, PMMA  
H: 8,9 mm, D: 21,8 mm  
Beam type: Oval

Code	Typ. FWHM	Typ. eff.	Typ. cd/lm
SATU-M	27	91	2,9
SATU-O	42 x 22	86	2,5
SATU-S	19	90	4,9
SATU-W	33	86	1,9

## CUTE

[www.ledil.com/cute](http://www.ledil.com/cute)

Code	Beam type	LEDs	Diameter	Height	Typ. FWHM	Typ. eff.	Typ. cd/lm
CUTE-3-M	M	3	35	15	24	88	3,8
CUTE-3-S	S	3	35	15	11		
CUTE-3-SS	SS	3	35	15	12	90	11,3
CUTE-3-W	W	3	35	15	39	83	1,6
CUTE-4-M	M	4	35	15	22	84	4,26
CUTE-4-SS	SS	4	35	15	11	88	13,2
CUTE-4-W	W	4	35	15	38		



## GT3

[www.ledil.com/gt3](http://www.ledil.com/gt3)

Name	Beam type	Diameter	Height	Typ. FWHM	Typ. eff.	Typ. cd/lm
GT3-M	M	35	9	30	89	2,2
GT3-S	S	35	9	18	90	4,5
GT3-W	W	35	9	40	88	1,6
GT3-WW	WW	35	9	47	90	1,1



## GT3-M

3 LEDs  
PMMA  
H: 9 mm  
D: 35 mm  
Beam type: Medium



## GT3-WW

3 LEDs  
PMMA  
H: 9 mm  
D: 35 mm  
Beam type: Extra W

## GT4

[www.ledil.com/gt4](http://www.ledil.com/gt4)

Name	Beam	Diameter	Height	Typ. FWHM	Typ. Eff.	Typ. cd/lm
GT4-M	M	35	9	28	88	2,5
GT4-S	S	35	9	21	90	3,3
GT4-W	W	35	9	38	89	1,7
GT4-WW	WW	35	9	53	90	1,1



# Multi-lens arrays

## ANNA

[www.ledil.com/anna](http://www.ledil.com/anna)

One of LEDiL's largest and most popular product families. ANNA family is versatile with optics in two diameters, wide selection of beam angles and sources.

**ANNA-50-5-S**



Name	Beam type	LED sources	D	H	Typ. FWHM	Typ. efficiency	Typ. cd/lm					
ANNA-40-3-M	M	3	40	10,7	22	88	3,7					
ANNA-40-4-M		4										
ANNA-40-5-M		5										
ANNA-40-6-M		6										
ANNA-40-7-M		7										
ANNA-50-3-M		3						50	10,7	25	87	3,2
ANNA-50-4-M		4										
ANNA-50-5-M	5											
ANNA-50-6-M	6											
ANNA-50-7-M	7											
ANNA-40-7-M2	M	7	40	10,7	25	87	3,2					
ANNA-40-3-S	S	3	40	10,7	15	91	8,5					
ANNA-40-4-S		4										
ANNA-40-5-S		5										
ANNA-40-6-S		6										
ANNA-40-7-S		7										
ANNA-50-3-S		3						50	10,7	15	91	8,5
ANNA-50-4-S		4										
ANNA-50-5-S	5											
ANNA-50-6-S	6											
ANNA-50-7-S	7											
ANNA-40-3-W	W	3	40	10,7	32	86	1,9					
ANNA-40-4-W		4										
ANNA-40-5-W		5										
ANNA-40-6-W		6										
ANNA-40-7-W		7										
ANNA-50-3-W		3						50	10,7	32	86	1,9
ANNA-50-4-W		4										
ANNA-50-5-W	5											
ANNA-50-6-W	6											
ANNA-50-7-W	7											



**ANNA-40-3-M**

D: 40 mm  
3 LEDs  
PMMA  
Beam type: Medium



**ANNA-40-4-S**

D: 40 mm  
4 LEDs  
PMMA  
Beam type: Spot



**ANNA-50-3-S**

D: 50 mm  
3 LEDs  
PMMA  
Beam type: Spot

## TUIJA

[www.ledil.com/tuija](http://www.ledil.com/tuija)

Name	Beam type	LEDs	D	H	Typ. FWHM	Typ. Efficiency	Typ. cd/lm
TUIJA-3-M	M	3	50	14,5	16	84	5,6
TUIJA-3-M2	M	3	50	14,5	35	87	2
TUIJA-3-SS	SS	3	50	14,5	12	90	12,9
TUIJA-3-W	W	3	50	14,5	53	86	0,9

## MARTHA

[www.ledil.com/martha](http://www.ledil.com/martha)

Name	Beam type	LEDs	D	Typ. H	Typ. FWHM
APOLLO-LAIKA-3-W	W	3	50	17	49
NIS83-MX-3-W	W	3	50	15	48
PLATINUMROCKET-3-W	w	3	50	16	43
PLATINUMROCKET-3-SS	SS	3	50	16	14
PLATINUMROCKET-3-M	M	3	50	16	20
NIS83-MX-3-M	M	3	50	16	22



**PLATINUMROCKET-3-SS**

D: 50 mm  
3 LEDs  
PMMA  
Beam type: Smooth spot

The information contained herein is the property of LEDiL Oy, Satorankatu 10, FI-24240 SALO, Finland and is subject to change without prior notice. Please visit [www.ledil.com](http://www.ledil.com) for additional information, such as the latest photometric files, 3D mechanical models, and application notes relating to handling, gluing and taping.

## TAMPA

[www.ledil.com/tampa](http://www.ledil.com/tampa)

Name	Beam type	Height	Typ. FWHM	Typ. eff.
NIS83-MX-7-M	M	11,4	20	90
NIS83-MX-7-MD	MD	11,4	22	91
NIS83-MX-7-W	W	11,4	37	89
NIS83-MX-7-WW	WW	11,4	57	87
RER-7-MD	MD	10,6	33	85
RER-7-S	S	10,6	19	89
RER-7-W	W	10,6	41	82
RER-7-WW	WW	10,6	53	90

**NIS83-MX-7-M**

D: 38 mm  
7 LEDs  
PMMA  
Beam type: Medium

## PENTA

[www.ledil.com/penta](http://www.ledil.com/penta)**PENTA-5-M**

D: 35,5 mm  
5 LEDs  
PMMA  
Beam type: Medium

Name	Beam type	LEDs	Height	FWHM
NIS83-MX-5-W	W	5	6,8	36
PENTA-5-M	M	5	7,2	30
RER-5-M	M	5	6,8	28

**NIS83-MX-5-W**

D: 35,5 mm, 5 LEDs, PMMA  
Beam type: Wide

## QUAK

[www.ledil.com/quak](http://www.ledil.com/quak)**NIS83-MX-4-M**

D: 50 mm  
4 LEDs  
PMMA  
Beam type: Medium

Name	Beam	FWHM
NIS83-MX-4-SS	SS	15
NIS83-MX-4-M	M	21
NIS83-MX-4-W	W	49



## VIRPI

[www.ledil.com/virpifamily](http://www.ledil.com/virpifamily)



### VIRPI-S

D: 74,9 x 74,9 mm  
 H: 9,4 mm  
 25 LEDs  
 PMMA  
 Beam type: Spot  
 Typical FWHM: 15°  
 Typical cd/lm: 7,5



### VIRPI-M

D: 74,9 x 74,9 mm  
 H: 9,4 mm  
 25 LEDs  
 PMMA  
 Beam type: Medium  
 Typical FWHM: 29°  
 Typical cd/lm: 2,7



### VIRPI-W

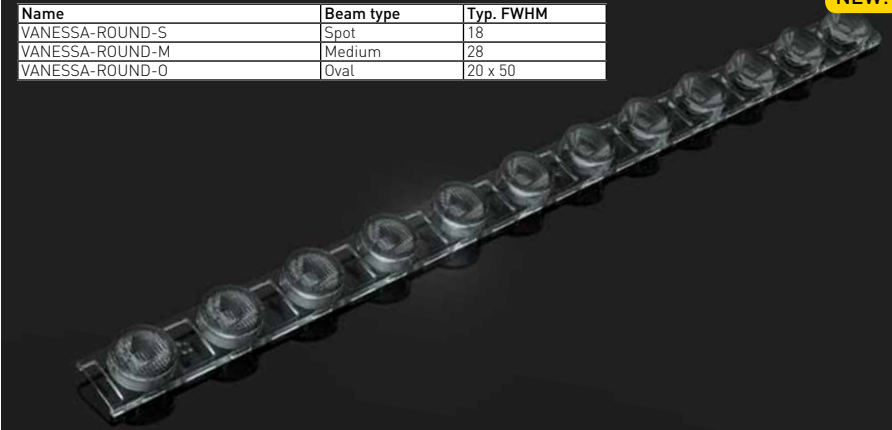
D: 74,9 x 74,9 mm  
 H: 9,4 mm  
 25 LEDs  
 PMMA  
 Beam type: Wide  
 Typical FWHM: 42°  
 Typical cd/lm: 1,6

## VANESSA

[www.ledil.com/vanessafamily](http://www.ledil.com/vanessafamily)

Name	Beam type	Typ. FWHM
VANESSA-ROUND-S	Spot	18
VANESSA-ROUND-M	Medium	28
VANESSA-ROUND-O	Oval	20 x 50

**NEW!**



## High Bay

[www.ledil.com/highbayfamily](http://www.ledil.com/highbayfamily)



**HB-SQ-A**  
D: 25 x 25 mm  
H: 12,9 mm  
PMMA  
Typ. FWHM: 50°  
Typ. eff: 91%



**HB-2X2-M**  
D: 50 x 50 mm  
H: 8,5 mm  
PMMA  
LEDs: 4



**HB-2X2-W**  
D: 50 x 50 mm  
H: 8,5 mm  
PMMA  
LEDs: 4



**HB-2X2-WW**  
D: 50 x 50 mm  
H: 8,5 mm  
PMMA  
LEDs: 4



**HB-5X1-W**  
D: 123 x 25 mm  
H: 9 mm  
PMMA  
LEDs: 5

## STRADA

[www.ledil.com/strada](http://www.ledil.com/strada)

STRADA lenses, originally designed for street lighting applications, are suitable for many other applications as well. Like all LEDiL products STRADA lenses are optimized for specific LED types and have optimal light distribution and over 90% optical efficiency. Some STRADA lenses

can also be used with other LED types with a small sacrifice in light distribution and optical efficiency. STRADA lenses designated for roadway lighting have batwing light distribution for better performance.

Symmetric STRADA lenses were the first lenses from

LEDiL designed especially for street lighting applications. On street lighting setups, symmetrical light distribution requires a mounting boom and tilt in the lamp head. This makes symmetrical STRADA lenses ideal for traditional street light replacement.

## Single optics



**STRADA-A**  
D: 19,6 x 15,4 mm  
H: 10,8 mm  
PMMA  
Typ. FWHM: 80° x 146°  
Typ. eff: 92%



**STRADA-A2**  
D: 19,6 x 15,4 mm  
H: 10,6 mm  
PMMA  
Typ. FWHM: 72° x 141°  
Typ. eff: 92%



**STRADA-B**  
D: 19,6 x 15,5 mm  
H: 6 mm  
PMMA  
Typ. FWHM: 105° x 44°  
Typ. eff: 93%



**STRADA-B2**  
D: 19,6 x 15,5 mm  
H: 5,3 mm  
PMMA  
Typ. FWHM: 111° x 47°  
Typ. eff: 92%



**STRADA-C**  
D: 19,6 x 15,6 mm  
H: 5,3 mm  
PMMA  
Typ. FWHM: 125°  
Typ. eff: 92%



**STRADA-C2**  
D: 19,6 x 15,6 mm  
H: 6,4 mm  
PMMA  
Typ. FWHM: 120°  
Typ. eff: 92%



**STRADA-C2-CLIP**  
D: 19,6 x 15,6 mm  
H: 6,9 mm  
PMMA  
Typ. eff: 92%



**STRADA-DN**  
D: 19,6 x 15,7 mm  
H: 5,9 mm  
PMMA  
Typ. FWHM: 107° x 58°  
Typ. eff: 92%

FWHM angles, efficiencies and cd/lm values contained herein are average values. Actual measured values depend of the specific LED/optic combination. Go to [www.ledil.com](http://www.ledil.com) for the LED specific values and optic datasheets.



**STRADA-DW**  
D: 19,6 x 15,7 mm  
H: 9,6 mm  
PMMA  
Typ. FWHM: 89° x 142°  
Typ. eff: 92%



**STRADA-FT**  
D: 19,6 x 15,4 mm  
H: 8,3 mm  
PMMA  
Typ. eff: 91%



**STRADA-FW**  
D: 19,6 x 15,5 mm  
H: 10,9 mm  
PMMA  
Typ. eff: 92%



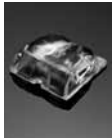
**STRADA-K**  
D: 19,6 x 15,5 mm  
H: 8,7 mm  
PMMA  
Typ. eff: 96%



**STRADA-S**  
D: 19,6 x 15,5 mm  
H: 6,9 mm  
PMMA  
Typ. FWHM: 149° x 159°  
Typ. eff: 93%



**STRADA-S-14**  
D: 19,6 x 15,5 mm  
H: 6,9 mm  
PMMA  
Typ. FWHM: 149° x 159°  
Typ. eff: 93%



**STRADA-SQ-A-T**  
D: 25 x 25 mm  
H: 9,1 mm  
PMMA  
Typ. eff: 93%



**STRADA-SQ-T-DN**  
D: 25 x 25 mm  
H: 8,5 mm  
PMMA  
Typ. eff: 90%



**STRADA-SQ-T-DW**  
D: 25 x 25 mm  
H: 11,4 mm  
PMMA  
Typ. eff: 91%



**STRADA-SQ-T-DWC**  
D: 25 x 25 mm  
H: 9,1 mm  
PMMA  
Typ. eff: 93%



**STRADA-SQ-VSM**  
D: 25 x 25 mm  
H: 6,9 mm, PMMA  
Typ. FWHM: 152°  
Typ. eff: 93%



**STRADA-T-DN**  
D: 19,8 x 15,5 mm  
H: 8,9 mm  
PMMA  
Typ. eff: 92%



**STRADA-T-DN-EP**  
D: 19,8 x 15,5 mm  
H: 8,8 mm  
PMMA  
Typ. eff: 91%



**STRADA-T-DW**  
D: 19,8 x 15,5 mm  
H: 10,8 mm  
PMMA  
Typ. eff: 93%



**STRADA-T-DW-EP**  
D: 19,8 x 15,5 mm  
H: 10,7 mm  
PMMA  
Typ. eff: 92%

## 2x2 modules

**NEW!**



**STRADA-2X2-T2**  
D: 50 x 50 mm, H: 7,7 mm  
For IESNA Type 2 road lighting



**STRADA-2X2-T3**  
D: 50 x 50 mm  
H: 7 mm  
PMMA



**STRADA-2X2-ME**  
D: 50 x 50 mm  
H: 8,2 mm  
PMMA



**STRADA-2X2-A-T**  
D: 50 x 50 mm  
H: 7,3 mm  
PMMA  
Typ. eff: 93%



**STRADA-2X2-DNW**  
D: 50 x 50 mm  
H: 11 mm  
PMMA  
Typ. eff: 93%



**STRADA-2X2-DWC**  
D: 50 x 50 mm  
H: 6 mm  
PMMA  
Typ. eff: 93%



## STRADA 6X1 modules

Precision-engineered lens array.

Emitted light has an asymmetric tilt in the wide beam to efficiently direct light to the roadway surface and to minimize stray light outside of target areas.



### STRADA-6X1-DNW

D: 119,8 x 25,2 mm, H: 5,6 mm  
Typ. efficiency: 93%



### STRADA-6X1-DWC

D: 119,8 x 25,2 mm, H: 5,5 mm  
Typ. efficiency: 94%

## STRADA-IP 2X6 modules

**NEW!**



### STRADA-IP-2X6-DWC

D: 173 x 71,4 mm, H: 7,9 mm  
Typ. efficiency: 96%

### STRADA-IP-2X6-ME

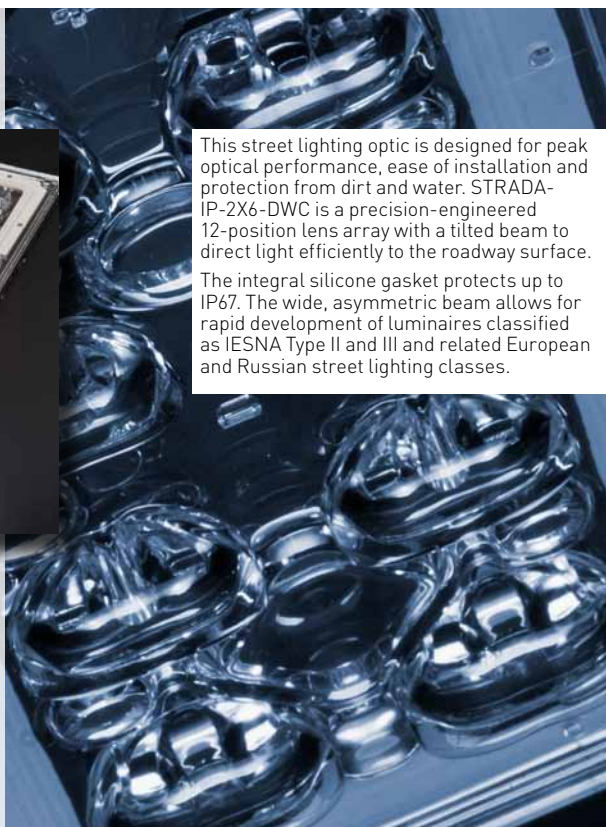
D: 173 x 71,4 mm, H: 7,9 mm  
Typ. efficiency: 96%

### STRADA-IP-2X6-T2

D: 173 x 71,4 mm, H: 7,9 mm  
Typ. efficiency: 96%

### STRADA-IP-2X6-T3

D: 173 x 71,4 mm, H: 7,9 mm  
Typ. efficiency: 96%



This street lighting optic is designed for peak optical performance, ease of installation and protection from dirt and water. STRADA-IP-2X6-DWC is a precision-engineered 12-position lens array with a tilted beam to direct light efficiently to the roadway surface.

The integral silicone gasket protects up to IP67. The wide, asymmetric beam allows for rapid development of luminaires classified as IESNA Type II and III and related European and Russian street lighting classes.