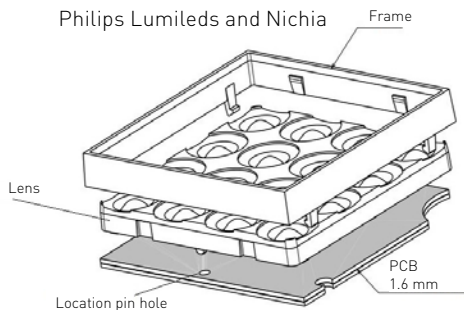




## LEDiL's new IDA – 16-up module family for mid-power LEDs

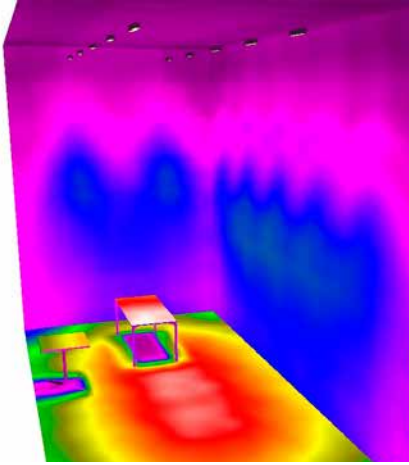
- 50 x 50 x 6.3 mm 16-up lens array
- Medium, Wide flood and Oval light distributions
- A lens and optional clip-on frame for 1.6 mm PCB.
- Modular system: optics held in place with installation frame
- Optional frames with integrated shades (UGR) planned
- Lens has two location pins in bottom for exact assembly to light engine.
- Possibility to use only lens (glue needed)
- Designed for mid power, size 3030 LED packages
- Optic array with 12.5 mm spacing, spacing can remain same if more than one units in row.
- Good color rendering and uniformity with a range of quality mid-power LEDs from suppliers like Osram,



Visit [www.ledil.com/idafamily](http://www.ledil.com/idafamily)  
for full family listing.

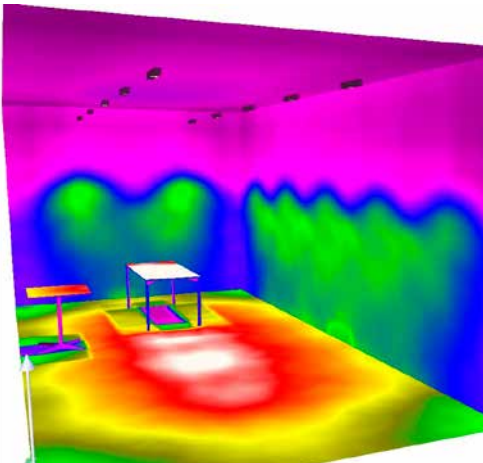
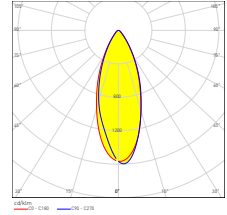


# APPLICATION EXAMPLE



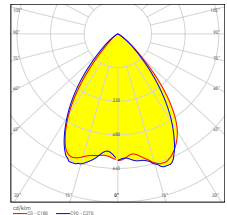
## IDA16-M

- 4 x 8 m room, 5 m high
- Task area 500 lx
- 7 pcs IDA16-M optics per fixture
- 10 fixtures installed 1.5 m spacing
- 2114 lm each fixture
- $E_{av}$ : 463 lx,  
 $E_{max}$ : 614 lx

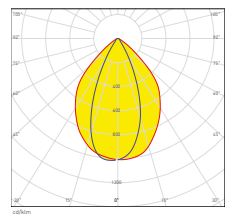


## IDA16-WW

- 4 x 8 m room, 3 m high
- Task area 500 lx
- 7 pcs IDA16-WW optics per fixture
- 10 fixtures installed 1.5 m spacing
- 2135 lm each fixture
- $E_{av}$ : 522 lx,  
 $E_{max}$ : 705 lx



Code	Beam type	Typ. FWHM	Typ. Eff.
IDA16-M	Narrow	41°	91%
IDA16-WW	Very Wide Flood	75°	89%
IDA16-O	Oval	90° + 33°	92%



IDA16-O