

Shelf lighting the LEDiL way – SHELLY and ZENIA

In quality retail lighting the task is how to direct the focus of a customer correctly. To accomplish this, LEDiL will launch two new optic families - SHELLY and ZENIA.

SHELLY-T-6X1-WAS

- Design to light the back wall of the shelf
- Both SHELLY versions feature modular six high power LED design with same LED pitch as in the STRADA-6x1 family
- Easy and ingenious breakable design, 1x6 module which can be broken into single lenses if needed
- Dimensions 119.8x19.6x7.6 mm

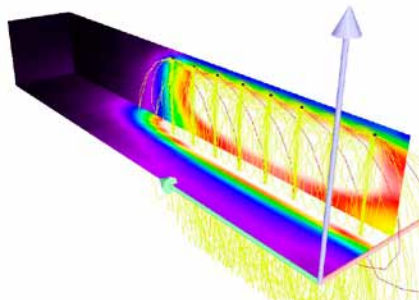
SHELLY-T-6X1-N

- Design for overall illumination of goods on shelves and in display counters
- Tilted beam reduces glaring, wideness provides even and pleasant illumination

ZENIA

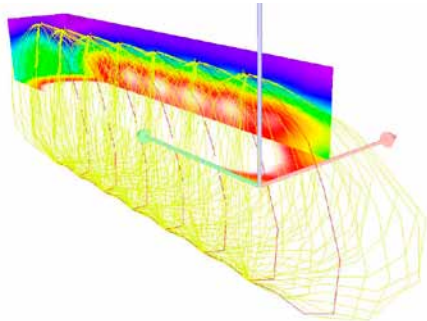
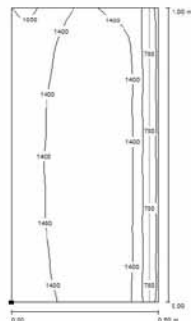
- Linear optic designed to illuminate backdrop inside the shelves
- For a range of mid-power LEDs
- Robust optical design provides pleasing results with a range of different type mid-power LEDs
- Tilted narrow beam prevents unwanted light spill

SHELLY-T application example



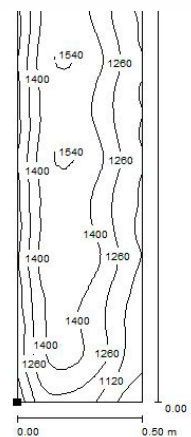
SHELLY-T-6X1-WAS

- 50x50 cm shelf space
- 20 cm interval between lamps, each distanced 10 cm from the back wall
- Each lamp is driven to 300lm flux output
- $E_{av}=1374$ lx, $E_{max}=1764$ lx



SHELLY-T-6X1-N

- 50x50 cm shelf space
- 40 cm interval between lamps, each indented 10 cm away from the front
- Each lamp is driven to 500lm flux output
- $E_{av}=1321$ lx, $E_{max}=1565$ lx, $U_0=0.676$



ZENIA - Shelf lighting for mid-power LEDs

- Dimensions 139.3x19.5x9.7 mm
- Designed to be installed as such or into a aluminum profile

